

HAMLET

46 COLLECTION

BEDS

3

BATH

2.5

TRADITIONAL

2,249^{SQ.FT.}

CHÂTEAU - 2,239^{SQ.FT.}

TUSCAN - 2,253^{SQ.FT.}

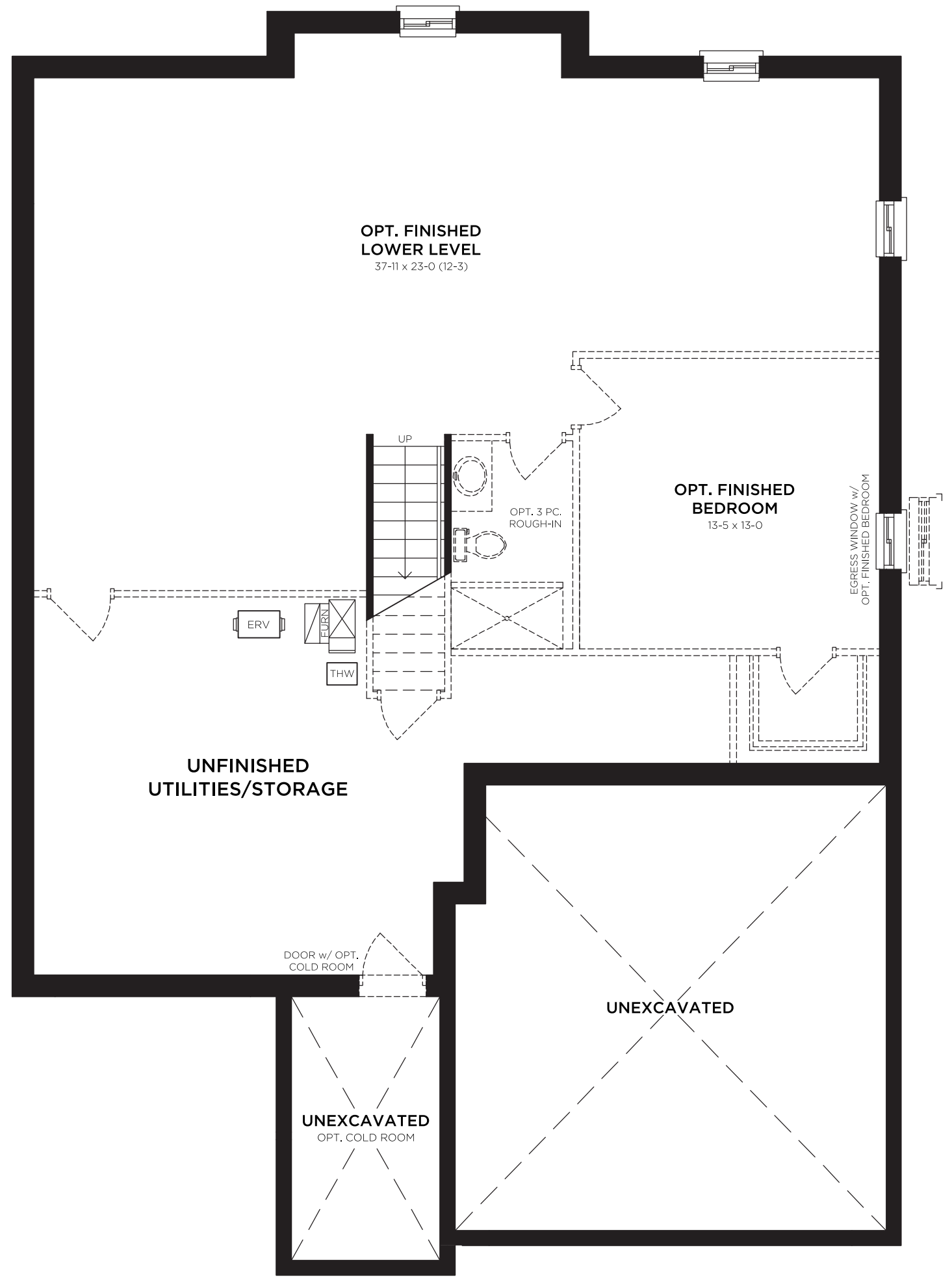
MODERN - 2,245^{SQ.FT.}

FARMHOUSE - 2,333^{SQ.FT.}

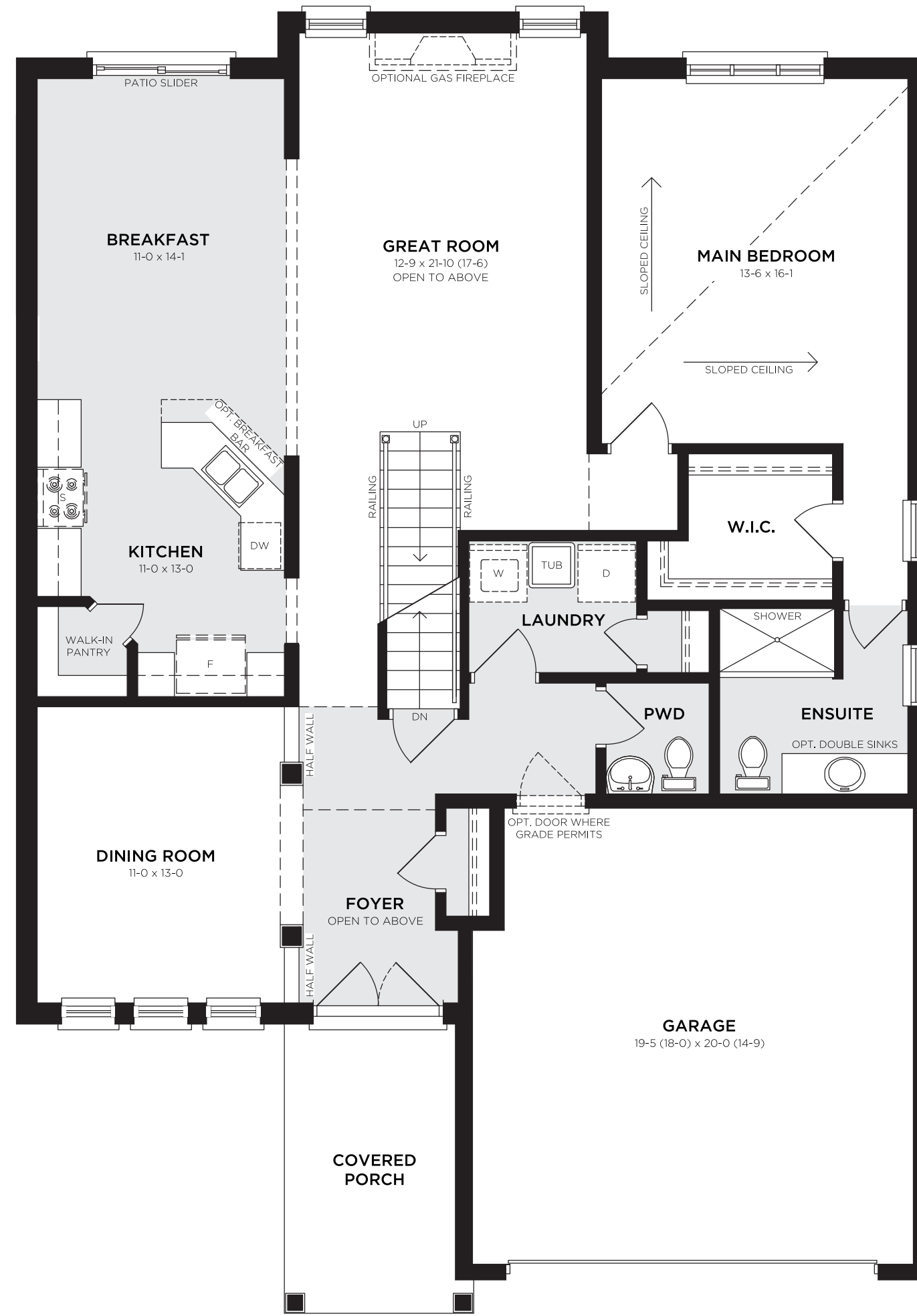


RIVERBANK ESTATES
NITH RIVER, PARIS

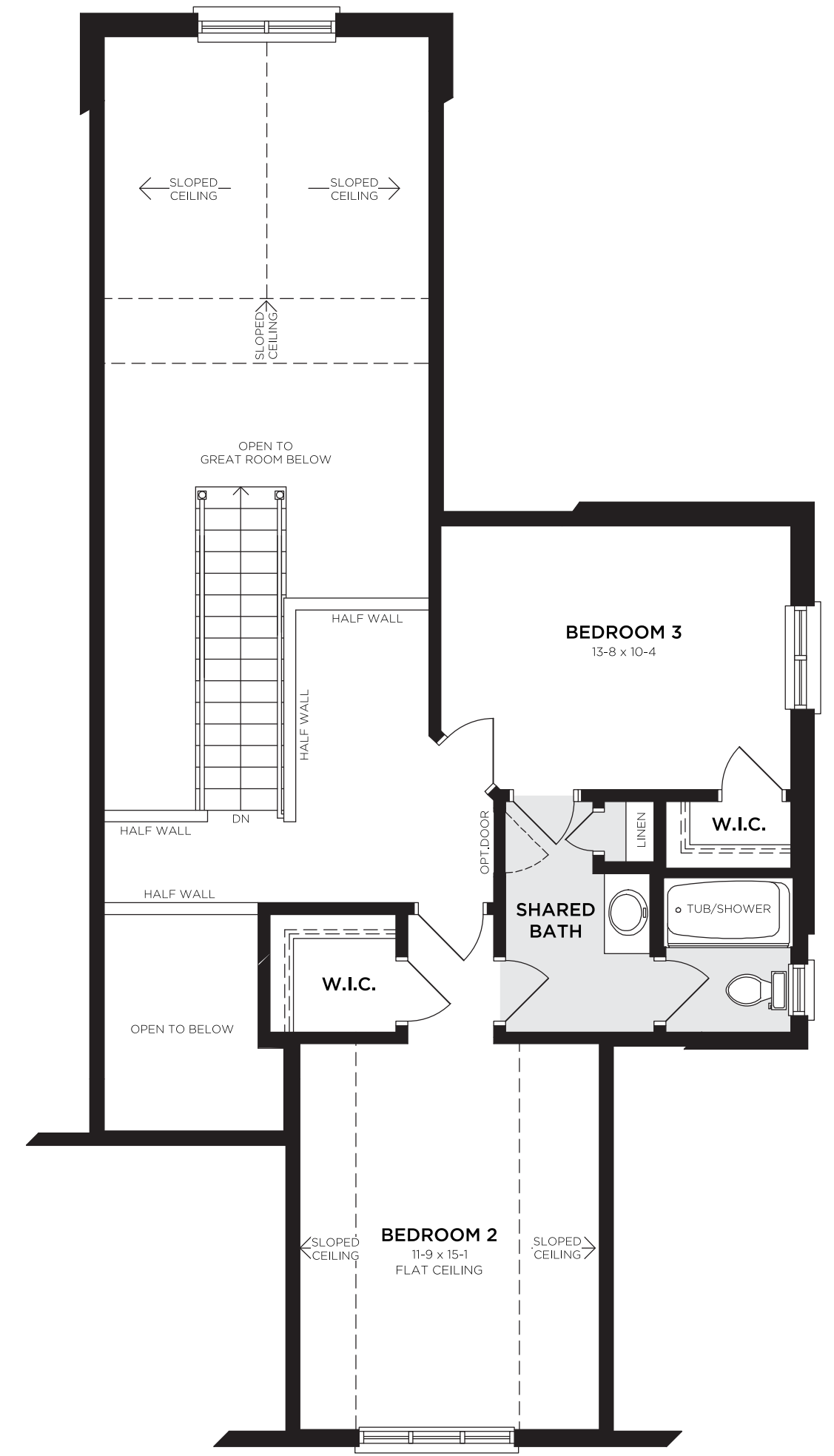
LOWER LEVEL



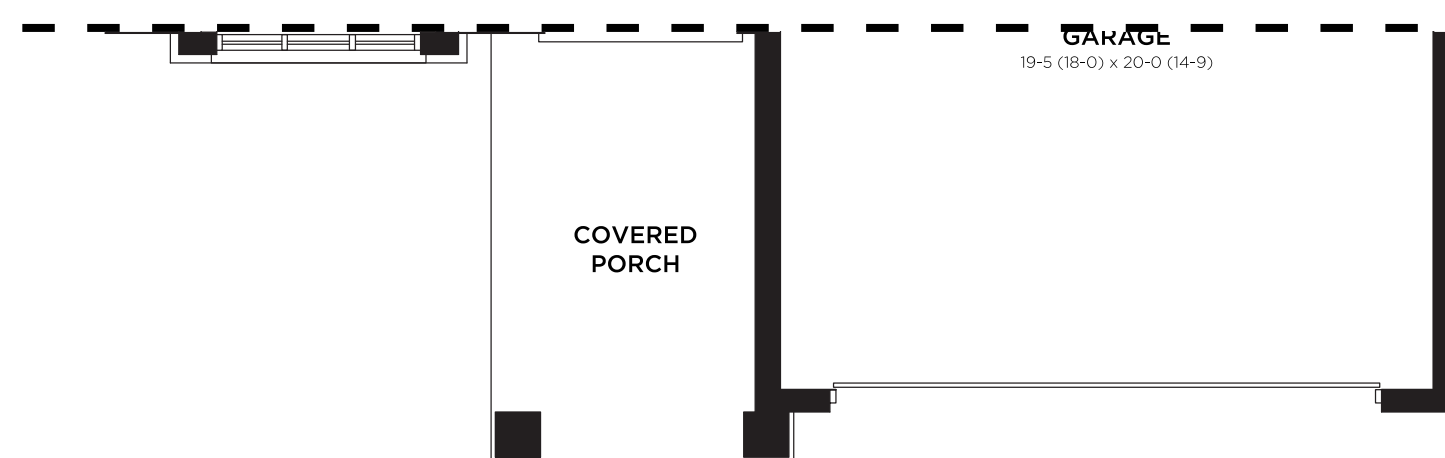
MAIN FLOOR - TRADITIONAL



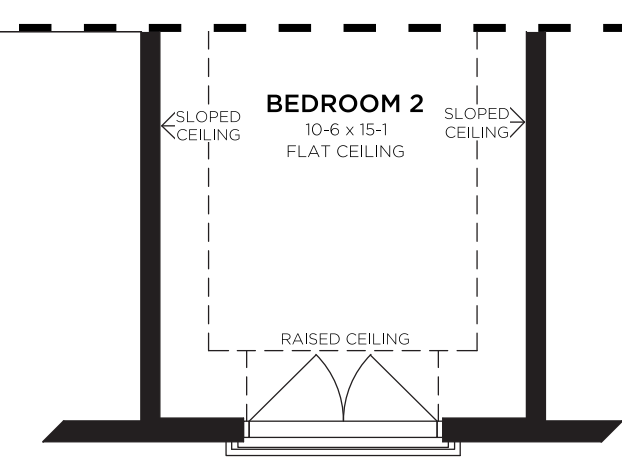
SECOND FLOOR - TRADITIONAL



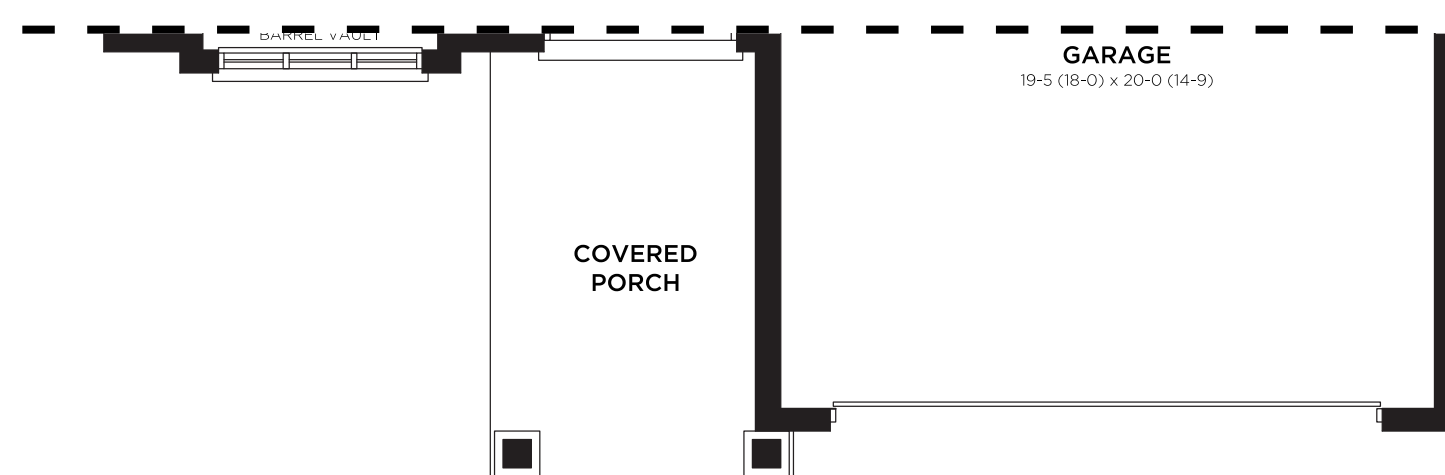
MAIN FLOOR - CHÂTEAU



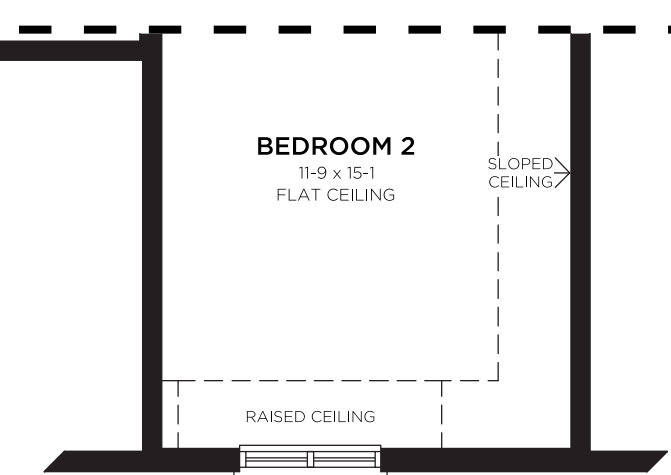
SECOND FLOOR - CHÂTEAU



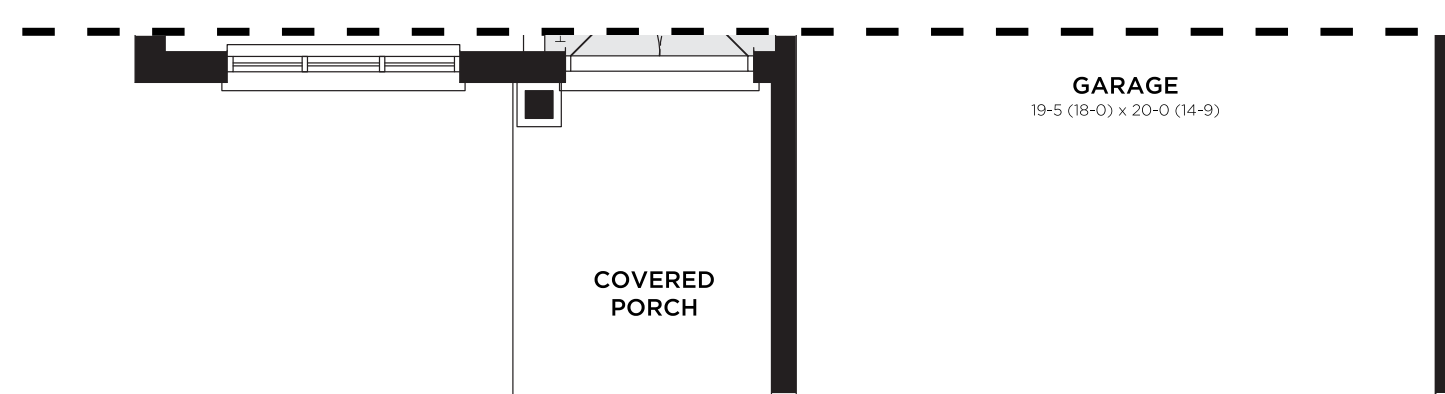
MAIN FLOOR - TUSCAN



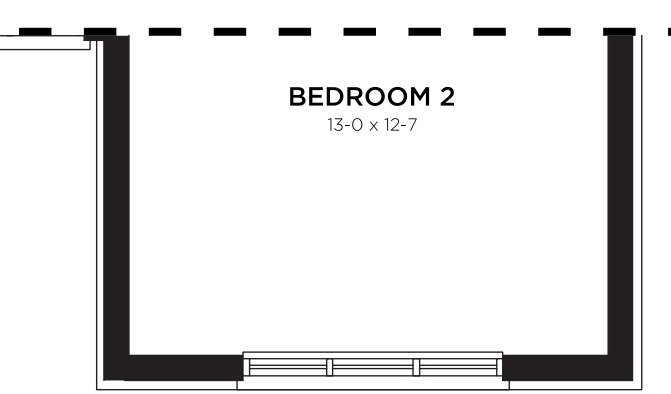
SECOND FLOOR - TUSCAN



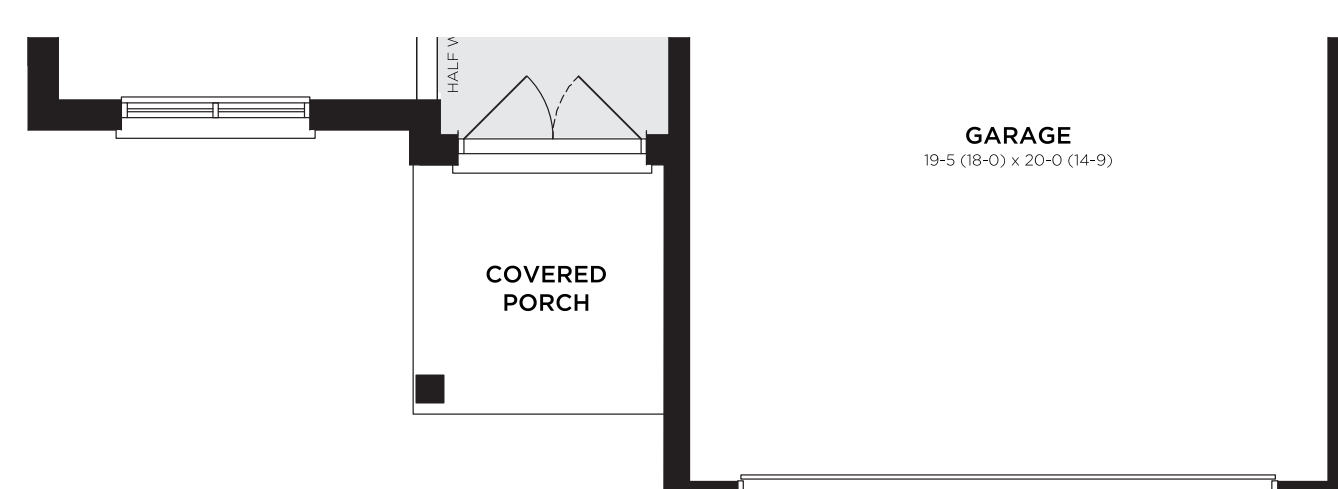
MAIN FLOOR - MODERN



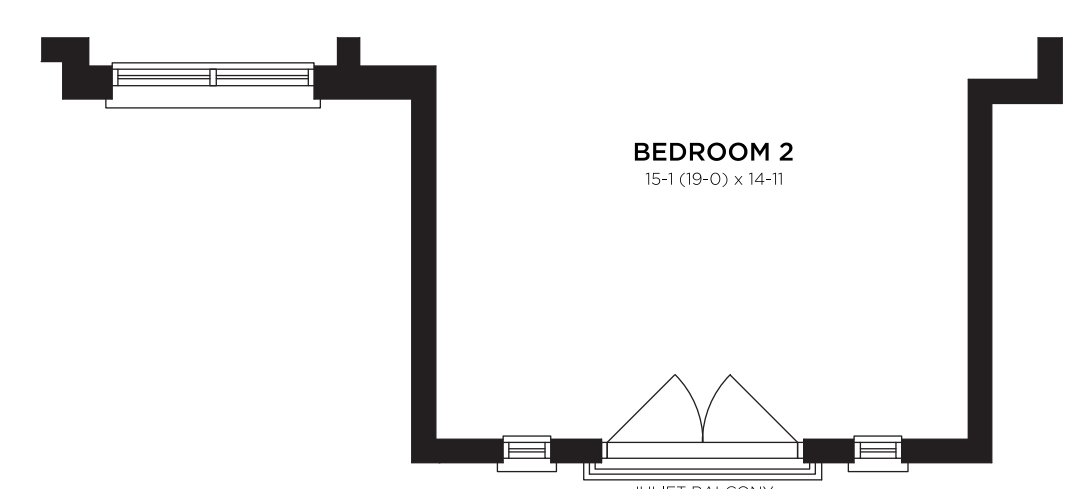
SECOND FLOOR - MODERN



MAIN FLOOR - FARMHOUSE



SECOND FLOOR - FARMHOUSE



Actual usable floor space may vary from the stated floor area. Room dimensions shown in the Vendor's marketing materials are approximate and not warranted, as variations may arise due to site conditions, engineering, or structural requirements. Construction of Dwelling may not be as shown. Some features labelled "Optional" or "Opt" are available at an additional cost. Exterior renderings are artist's concept and are subject to architectural controls, material availability, applicable floor plans, and site conditions. Window placement on side and rear elevations may be altered or omitted due to side yard setbacks, rear grading, or other site constraints. All details, dimensions, finishes, features, fixtures and specifications are subject to change without notice at the discretion of the vendor, the municipality, the developer, or the vendor's control architect. Total square footage is warranted by the Vendor in accordance with the HCRA Directive 3 – Floor Area Calculations, dated February 1, 2021, and updated March 22, 2021 (formerly Tarion's Builder Bulletin 22). A tolerance of 2.0% on the total area measurement is acceptable. Garage area is excluded from the floor area calculation, while any finished, year-round habitable space above the garage is included. Features noted as "where grade permits" or "subject to grading" may not be feasible depending on the grading of the land. In some cases, this may require adjacent floor areas to be lowered by one riser, resulting in "sunken" areas. Product availability is constantly changing. Prices are accurate at the time of publishing and subject to change. Move in dates vary and may not be guaranteed in all circumstances. Free upgrade packages and included extras have no cash redemption value and may consist of pre-selected items. E. & O. E. August 25, 2025.