



UNIT - 300 | \$669,900

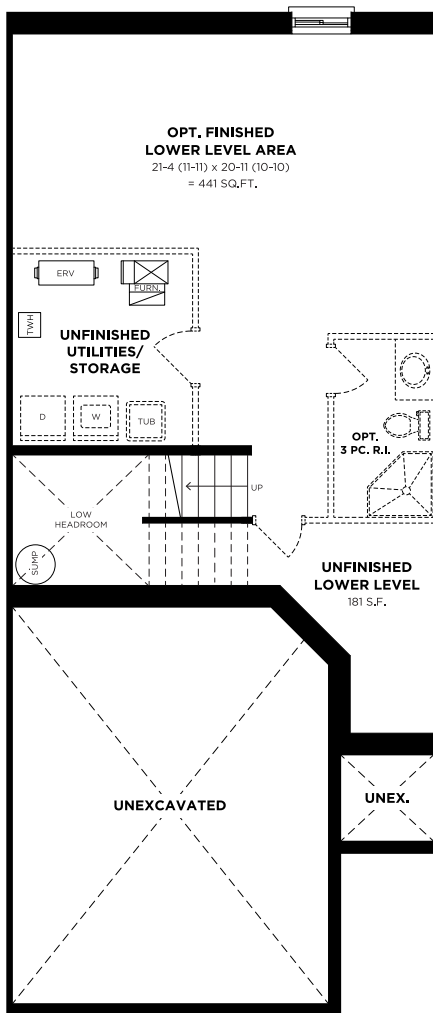
22' AMBROSIA INTERIOR A

🛏️ — 3 🚿 — 2.5 🏠 — 1,736 SQ.FT.

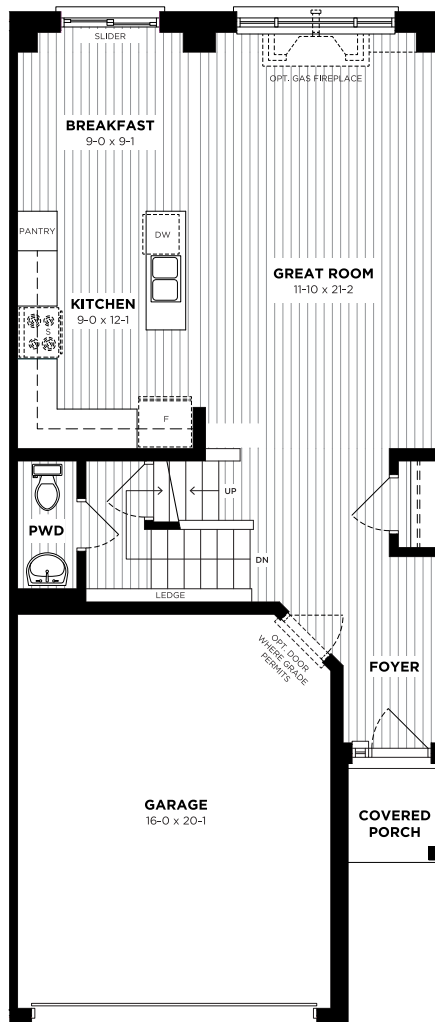
Spec to Finish | Move In Ready in 120 Days
INCLUDED DESIGNER UPGRADES

- Look-Out Grading Condition
- Rough-In Capped Box over Kitchen Island on a Separate Switch
- Corner Piano-hinged Upper Cabinet
- 6-9 Interior LED Pot Lights on Main Floor
- Three-Piece Rough-In on Lower Level

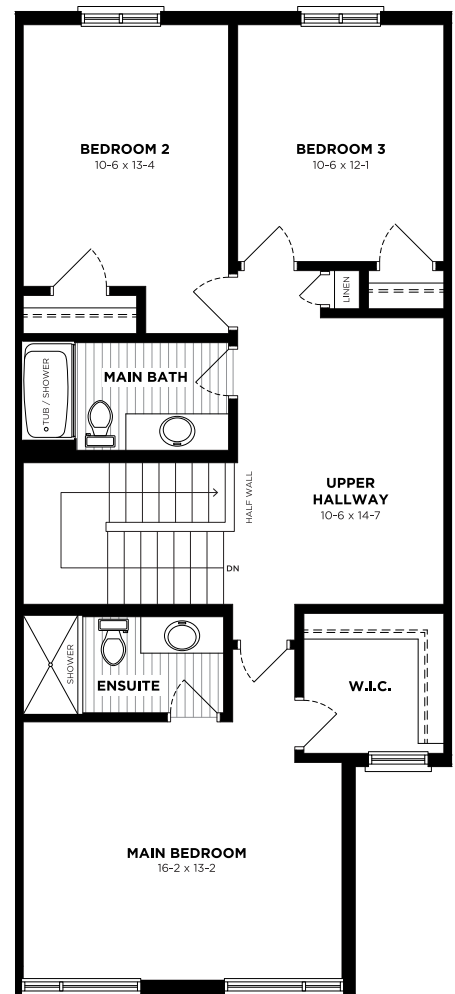
GROUND FLOOR



MAIN FLOOR



SECOND FLOOR



is warranted by the Vendor in accordance with the HCRA Directive 3 – Floor Area Calculations, dated February 1, 2021, and updated March 22, 2021 (formerly Tarion's Builder Bulletin 22). A tolerance of 2.0% on the total area measurement is acceptable. Garage area is excluded from the floor area calculation, while any finished, year-round habitable space above the garage is included. Features noted as "where grade permits" or "subject to grading" may not be feasible depending on the grading of the land. In some cases, this may require adjacent floor areas to be lowered by one riser, resulting in "sunken" areas. Product availability is constantly changing. Prices are accurate at the time of publishing and subject to change. Move in dates vary and may not be guaranteed in all circumstances. Free upgrade packages and included extras have no cash redemption value and may consist of pre-selected items. E. & O. E. August 19, 2025.