




# Woodview

## LOT - 3 PREMIUM CUSTOM Move In Ready in 120 Days

 3+  2.5  3,177 SQ.FT.

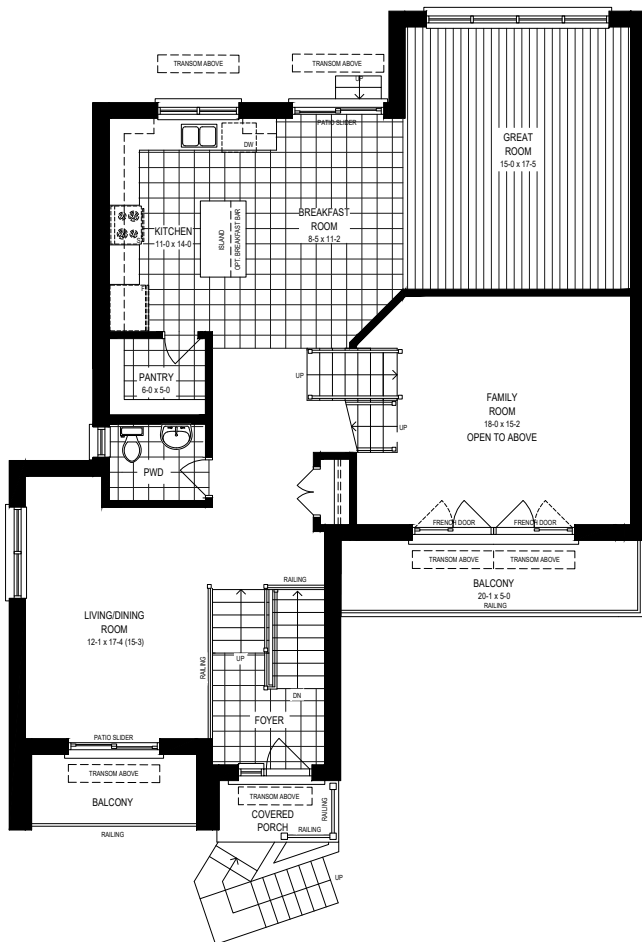
OVER \$36,000 IN DESIGNER UPGRADES



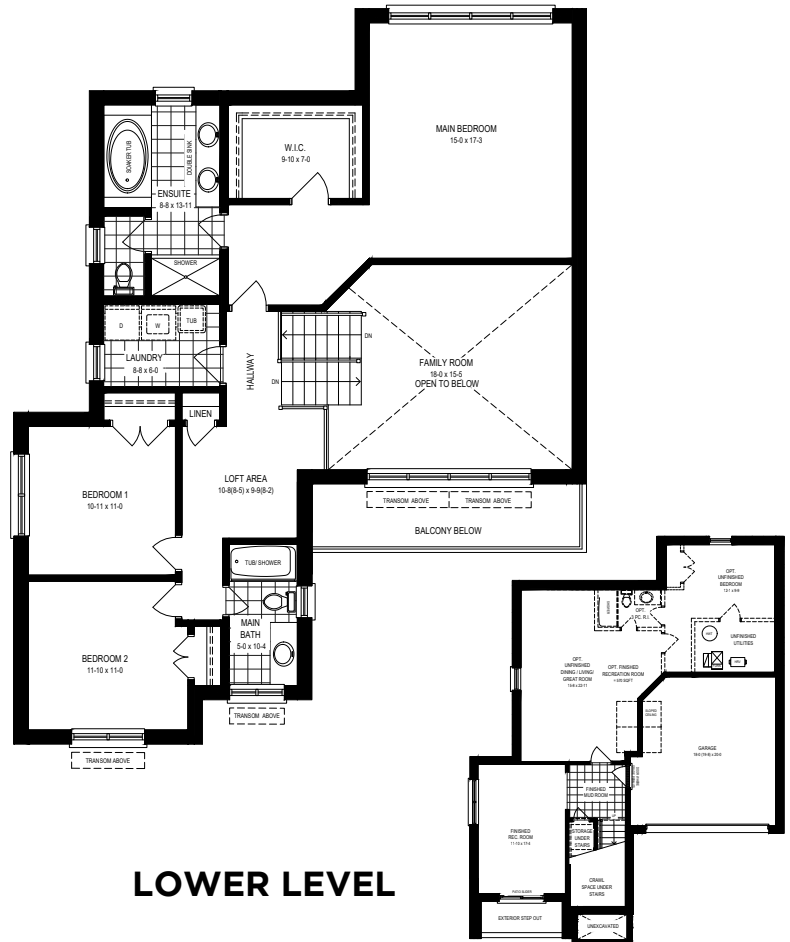
### DESIGNER UPGRADES CHOOSE YOUR FINISHES

- 8' high doors in front entry, Main and Second Floors
- Garage Man Door
- Full Lower Level height with Three-piece Rough-in
- Oak stairs from Main to Second Floor with Victorian Oak Posts
- 200 AMP panel
- Air Conditioner unit
- Pot-lights in throughout Main Floor and Exterior
- Electric Linear Fireplace in Great Room
- Quartz countertops, Standard fridge build-out with deep upper cabinet above and LED Kitchen valance lighting in Kitchen
- Freestanding Bathtub in Luxury Ensuite
- Additional bathroom sink in Luxury Ensuite and Shared Bath
- Tiled shower with tiled base and frameless glass door in Luxury Ensuite and Secondary Ensuite

### MAIN FLOOR INCLUDES 9' CEILINGS



### SECOND FLOOR INCLUDES 9' CEILINGS



### LOWER LEVEL

Artist's concept only. Construction of dwelling may not be exactly as shown. Some features shown may be optional extras at additional cost. Exterior elevations, renderings or sketches are subject to architectural controls, the availability of materials to the vendor during the construction of the dwelling, and site conditions. Some windows shown on side elevations may not be available due to the applicable side yard setback. Accordingly, all details, dimensions, treatments, specifications and features shown may be changed by the vendor, the municipality, the developer or the vendor's control architect, in their sole and unfettered discretion at any time without notice. Traditional Floorplans are shown. Dimensions, Specifications, layouts, window sizes are approximate only, these items may vary, and are subject to change as provided in the Agreement of Purchase and Sale. All measurements are representational, square footage varies according to architectural style. Plans may be reversed. For additional Legal information, please refer to Losani Homes Pronto website page. E. & O. E. APRIL 23, 2025 11:15 AM