

UNIT - 128 | \$672,900
WHITEHAVEN INTERIOR F3

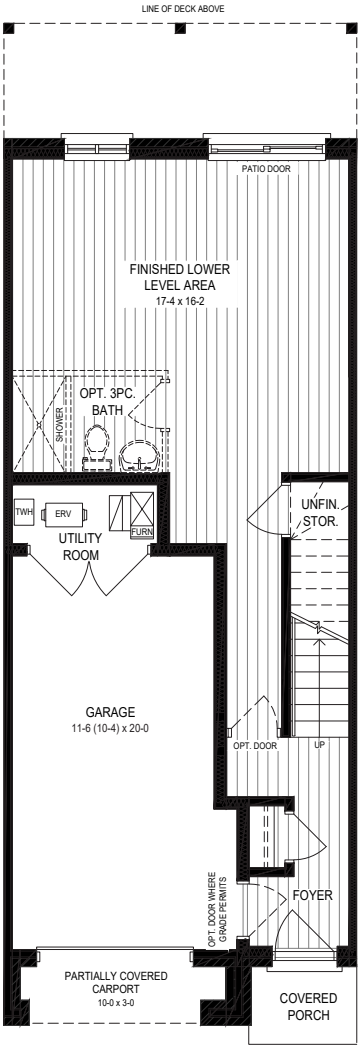
3 — 2.5 — 2,016 SQ.FT.

Spec to Drywall | Move In Ready in 120 Days
INCLUDED DESIGNER UPGRADES

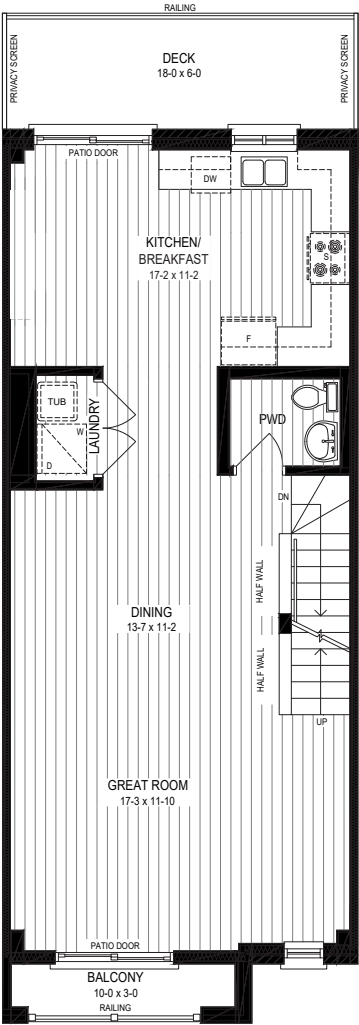
- Corner Piano-hinged Upper Cabinet
- 6 Interior LED Pot Lights in Great Room
- Three-Piece Rough-in on Ground Floor



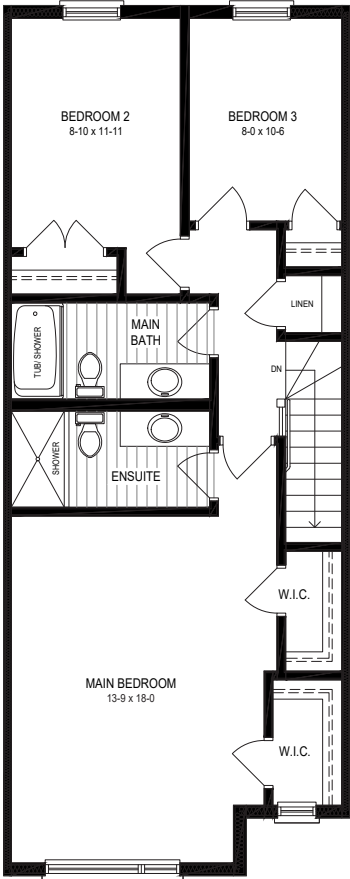
GROUND FLOOR



MAIN FLOOR



SECOND FLOOR



*For Pricing, incentives, extra's and deposit structure, please refer to page 21. Artist's concept only. Construction of dwelling may not be exactly as shown. Actual usable floor space may vary from the stated floor area in the Vendor's marketing materials. Please refer to Page 23 for additional legal information. Actual usable floor space may vary from any stated floor area in the Vendor's marketing materials. Due to site conditions and engineering or structural requirements, individual room dimensions shown in the Vendor's marketing materials are not warranted and do not form part of this contract. Total square footage measurements are warranted by the Vendor, subject to the measurements and tolerances prescribed by HCRA Directive 3 - Floor Area Calculations, formerly Bulletin 22 published by the Taron Warranty Corporation. Some windows shown on side elevations