



**MyCentralPark.ca**

1809 Rymal Rd. E., Stoney Creek  
E: CentralPark@losanihomes.com



Floorplan may change with elevation. Renderings are artist's concept only. Construction of dwelling may not be exactly as shown. Some features shown may be optional extras at additional cost. Exterior elevations, renderings or sketches are subject to architectural controls, the availability of materials to the Vendor during the construction of the Dwelling, and site conditions. Some windows shown on side elevations may not be available due to the applicable side yard setback. Accordingly, all details, dimensions, treatments, specifications and features shown may be changed by the Vendor, the Municipality, the Developer or the Vendor's control architect, in their sole and unfettered discretion at any time without notice. Actual usable floor space may vary from the stated floor area. Due to site conditions and engineering or structural requirements, individual room dimensions may vary. Square footage is measured using the methods and tolerances prescribed by Bulletin 22 published by the Taron Warranty Corporation. To view the acceptable measures and tolerances, please visit builder bulletin 22 at [www.taron.com](http://www.taron.com). Some windows shown on side elevations may not be available due to the applicable side yard setback. Features identified as "Optional" or "Opt" are an additional cost, and may not be available based on the stage of construction of the home. The location of fixtures such as electrical panels, hot water tanks, sump pumps or furnaces may change due to site conditions or engineering requirements. Features shown "where grade permits" or "subject to grading" may not be available based on the grading of the land, and may in some cases require adjacent floor areas to be lowered by one riser, or "sunken". This site plan generally depicts a draft plan submitted to the municipality for development approvals. All details, dimensions and features shown on this schedule are intended to display the preliminary lot plan of the lot purchased herein only. The lot and surrounding lots or other features shown on this schedule such as driveway locations, depth measurements and landscaping features are subject to approval by the municipality, the Vendors consulting engineers, and developer. Accordingly the lot, adjacent lots, and all such surrounding features shown on this schedule are subject to change without notice and may differ from this schedule. Note: Items specified in this Bonus Schedule replace and supersede the items, types and specifications listed in Schedule "A". \*(Does not apply to all types of quartz available from the Vendor, only those samples categorized as "level one". To view the quartz type applicable to this incentive, see the vendor's representative in its Home Design Centre) \*\*Does not apply to apply all types of hardwood available from the vendor only those samples as categorized as "bonus level". To view the hardwood type applicable to this incentive, see the vendor's representative in its Home Design Centre. Features/Finishes listed are subject to change and vary by site and product type. Specifications may also change due to the availability of materials, site conditions municipal requirements and/or changes in applicable building codes. Alternate features may be provided as "permitted substitutions" in circumstances prescribed by the Taron Warranty Corporation. Samples of the materials currently offered by Losani Homes are available for viewing at the Losani Home Design Centre. Second floor room dimensions will be reduced due to all brick construction. Room Dimensions shown may be reduced where "all brick conditions" are purchased or included in the base price of the home. Although the exterior envelope of the dwelling does not change, "all brick" exteriors reduce interior dimensions by increasing the width of all affected exterior walls. E & O.E. September 2016. Aerial photographs were taken from various angles and heights in order to generally illustrate the relative location of the Central Park site and surrounding features. This rendering is not to scale and may not reflect the actual buildings, businesses and structures in existence at the time of development. Losani Homes makes no representation or warranty with respect to the actual views or locations of such features from the homes once fully constructed. Listed travel times are general in nature and may vary depending upon traffic and personal variables such as fitness and mobility level. E&O.E. October 2016

PARK  AVE  
CENTRAL PARK



**PARK AVE**

**33' & 36' Detached Homes**



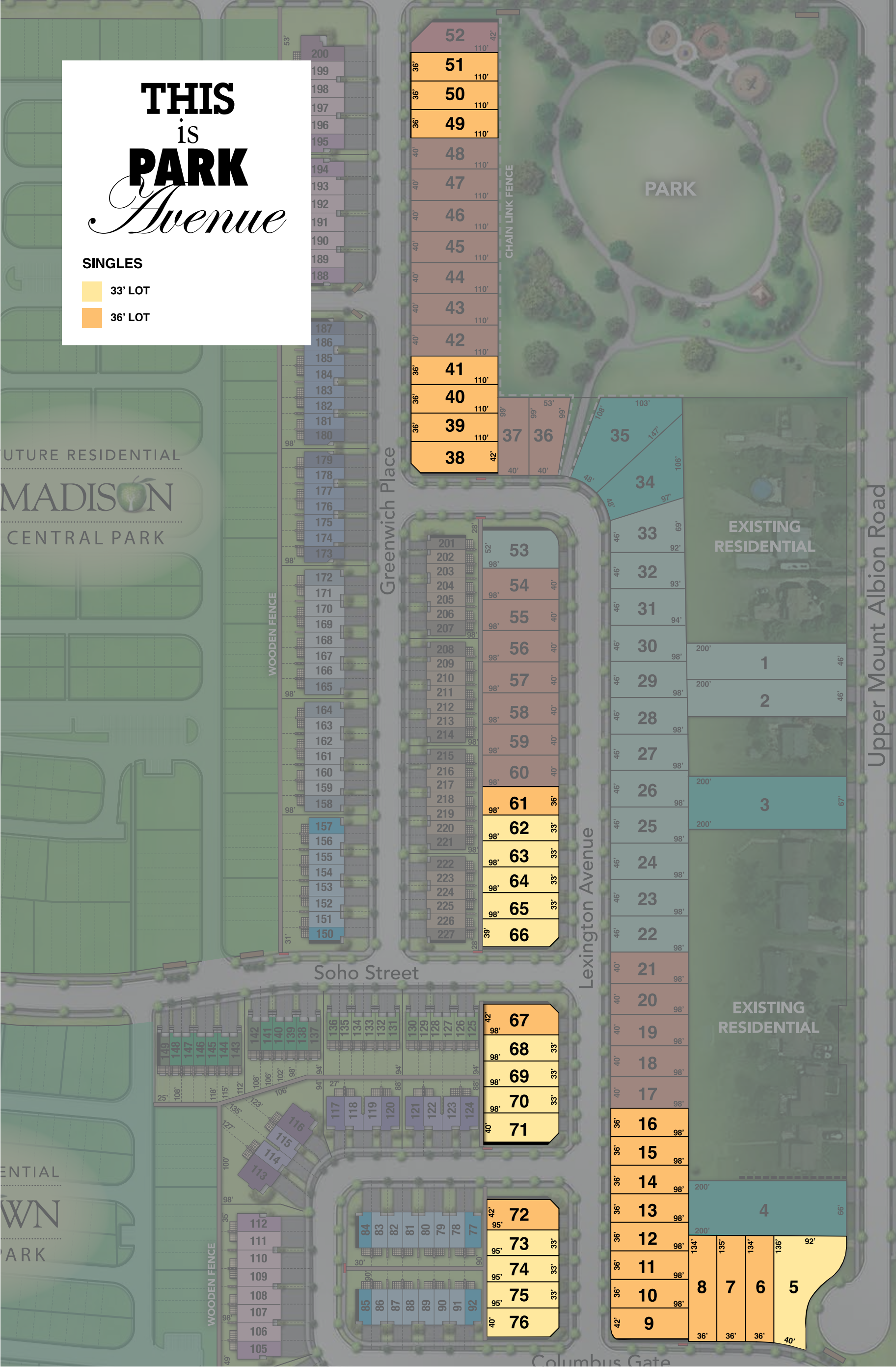
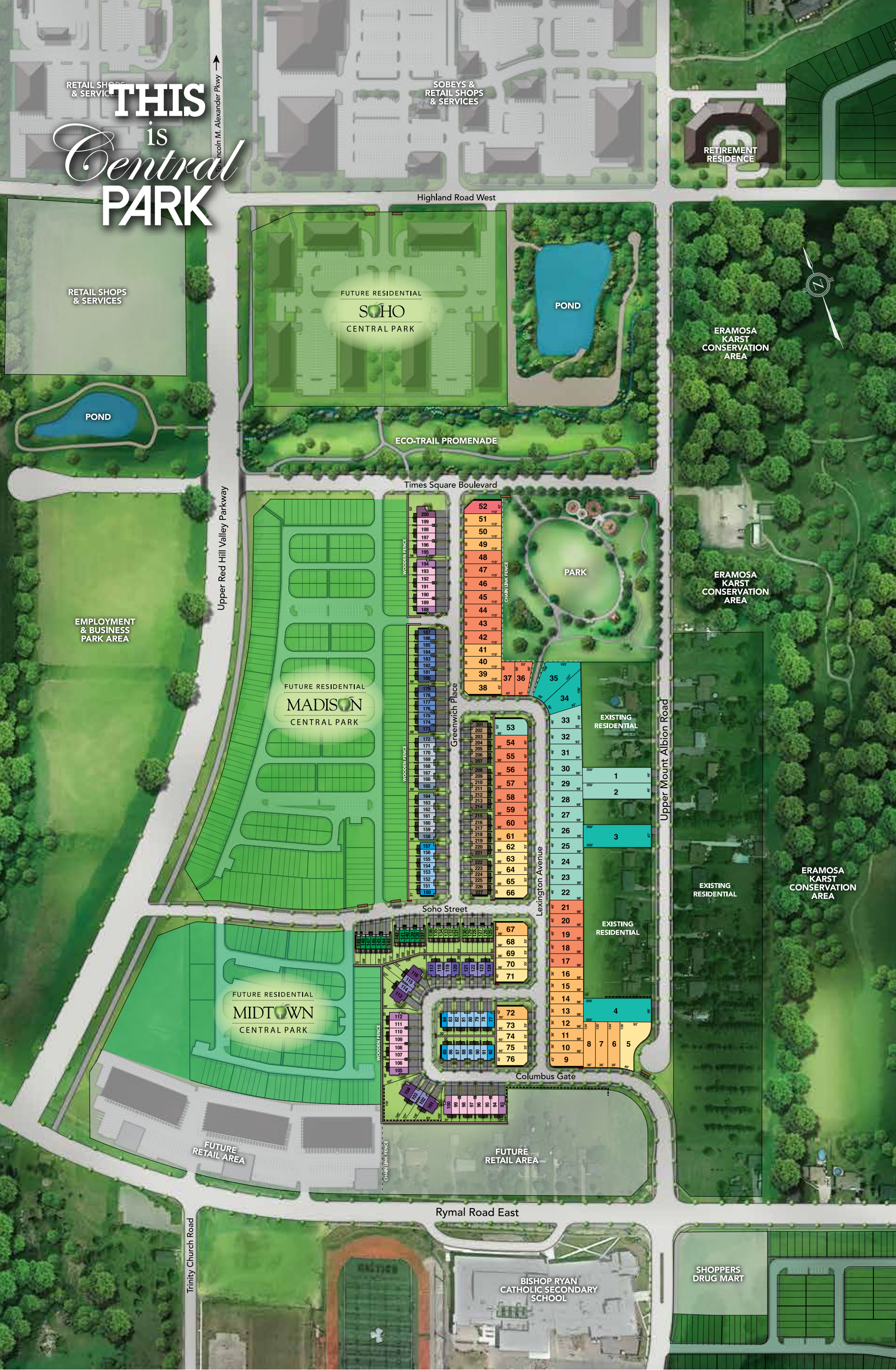
LIVE  
RIGHT  
BY  
THE  
*Park*













# THE GARDENIA

33' Collection



Floorplans may change with elevation. Artist's concept only. Construction of dwelling may not be exactly as shown. Some features shown may be optional extras at additional cost. Exterior elevations, renderings or sketches are subject to architectural controls, the availability of materials to the Vendor during the construction of the Dwelling, and site conditions. Some windows shown on side elevations may not be available due to the applicable side yard setback. Accordingly, all details, dimensions, treatments, specifications and features shown may be changed by the Vendor, the Municipality, the Developer or the Vendor's control architect, in their sole and unfettered discretion at any time without notice.





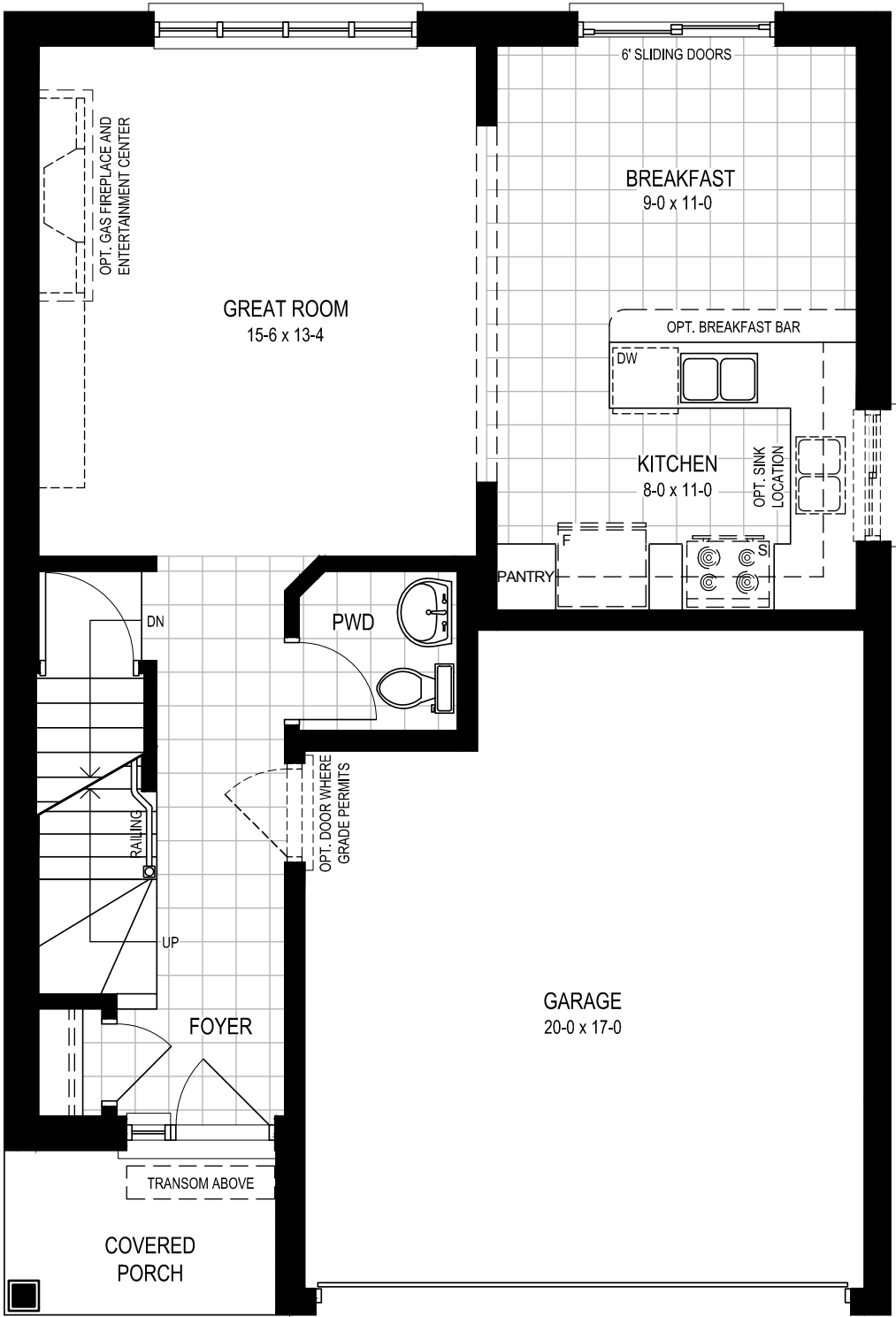
Modern 1,503 sq.ft.  
Chateau 1,511 sq.ft.



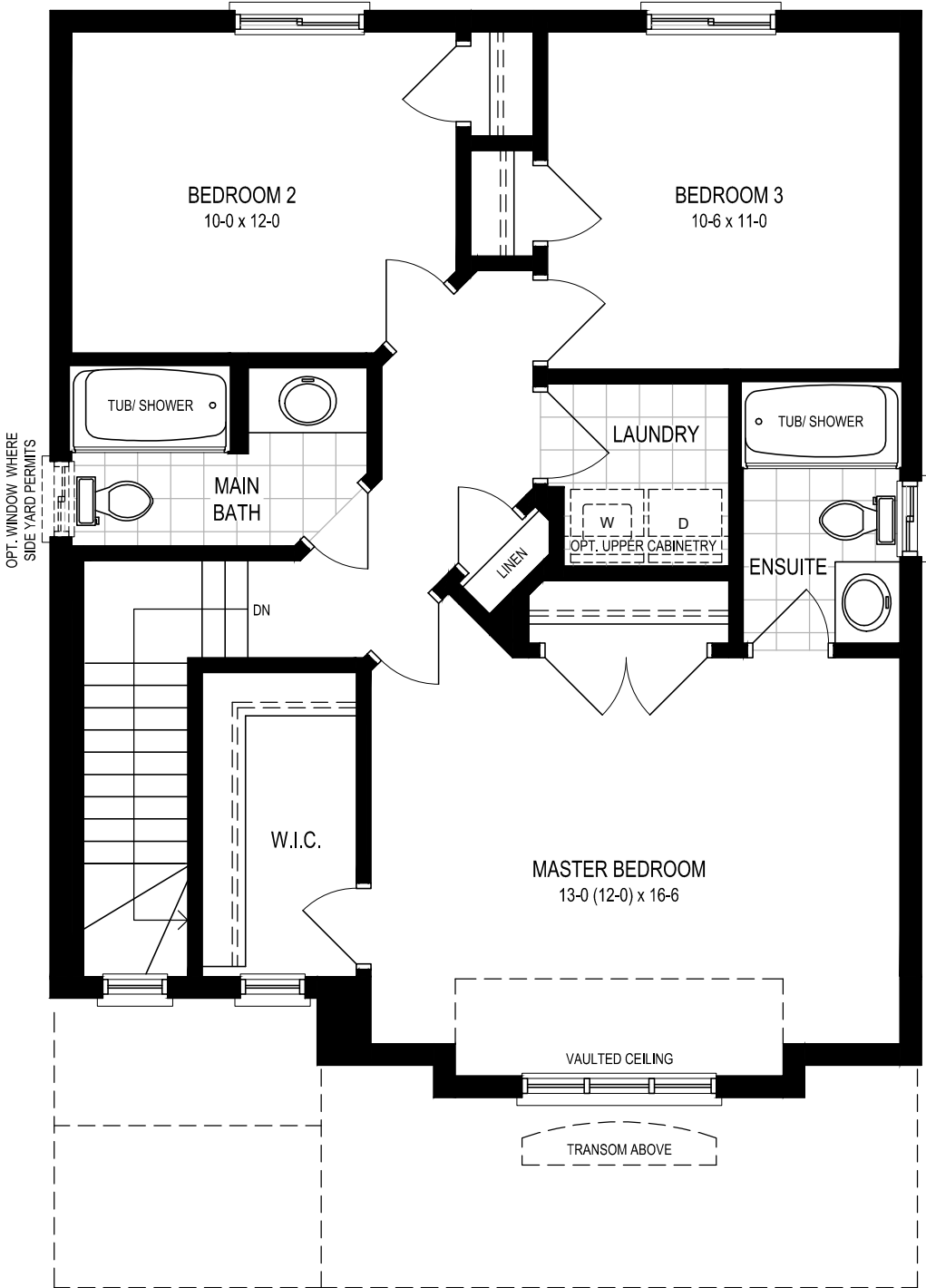
Modern Series



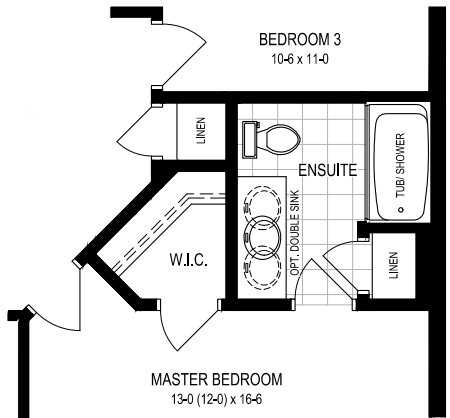
Chateau Series



Chateau  
M1



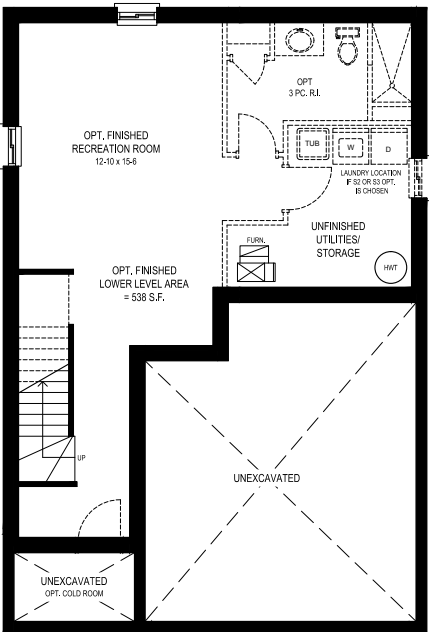
Chateau  
S1



All Elevations  
S2



All Elevations  
S3



All Elevations  
B1

## Main Floor

Floorplans may change with elevation. Artist's concept only. Construction of dwelling may not be exactly as shown. Some features shown may be optional extras at additional cost. Exterior elevations, renderings or sketches are subject to architectural controls, the availability of materials to the Vendor during the construction of the Dwelling, and site conditions. Some windows shown on side elevations may not be available due to the applicable side yard setback. Accordingly, all details, dimensions, treatments, specifications and features shown may be changed by the Vendor, the Municipality, the Developer or the Vendor's control architect, in their sole and unfettered discretion at any time without notice. Actual usable floor space may vary from the stated floor area. Due to site conditions and engineering or structural requirements, individual room dimensions may vary. Square footage is measured using the methods and tolerances prescribed by Bulletin 22 published by the Tarion Warranty Corporation. To view the acceptable measures and tolerances, please visit builder bulletin 22 at [www.tarion.com](http://www.tarion.com). Some windows shown on side elevations may not be available due to the applicable side yard setback. Features identified as "Optional" or "Opt" are an additional cost, and may not be available based on the stage of construction of the home. The location of fixtures such as electrical panels, hot water tanks, sump pumps or furnaces may change due to site conditions or engineering requirements. Features shown "where grade permits" or "subject to grading" may not be available based on the grading of the land, and may in some cases require adjacent floor areas to be lowered by one riser, or "sunken". E.&O.E. October 2016

## Second Floor, Lower Level & Enhancements





# THE GREENBOROUGH

33' Collection



Floorplans may change with elevation. Artist's concept only. Construction of dwelling may not be exactly as shown. Some features shown may be optional extras at additional cost. Exterior elevations, renderings or sketches are subject to architectural controls, the availability of materials to the Vendor during the construction of the Dwelling, and site conditions. Some windows shown on side elevations may not be available due to the applicable side yard setback. Accordingly, all details, dimensions, treatments, specifications and features shown may be changed by the Vendor, the Municipality, the Developer or the Vendor's control architect, in their sole and unfettered discretion at any time without notice.





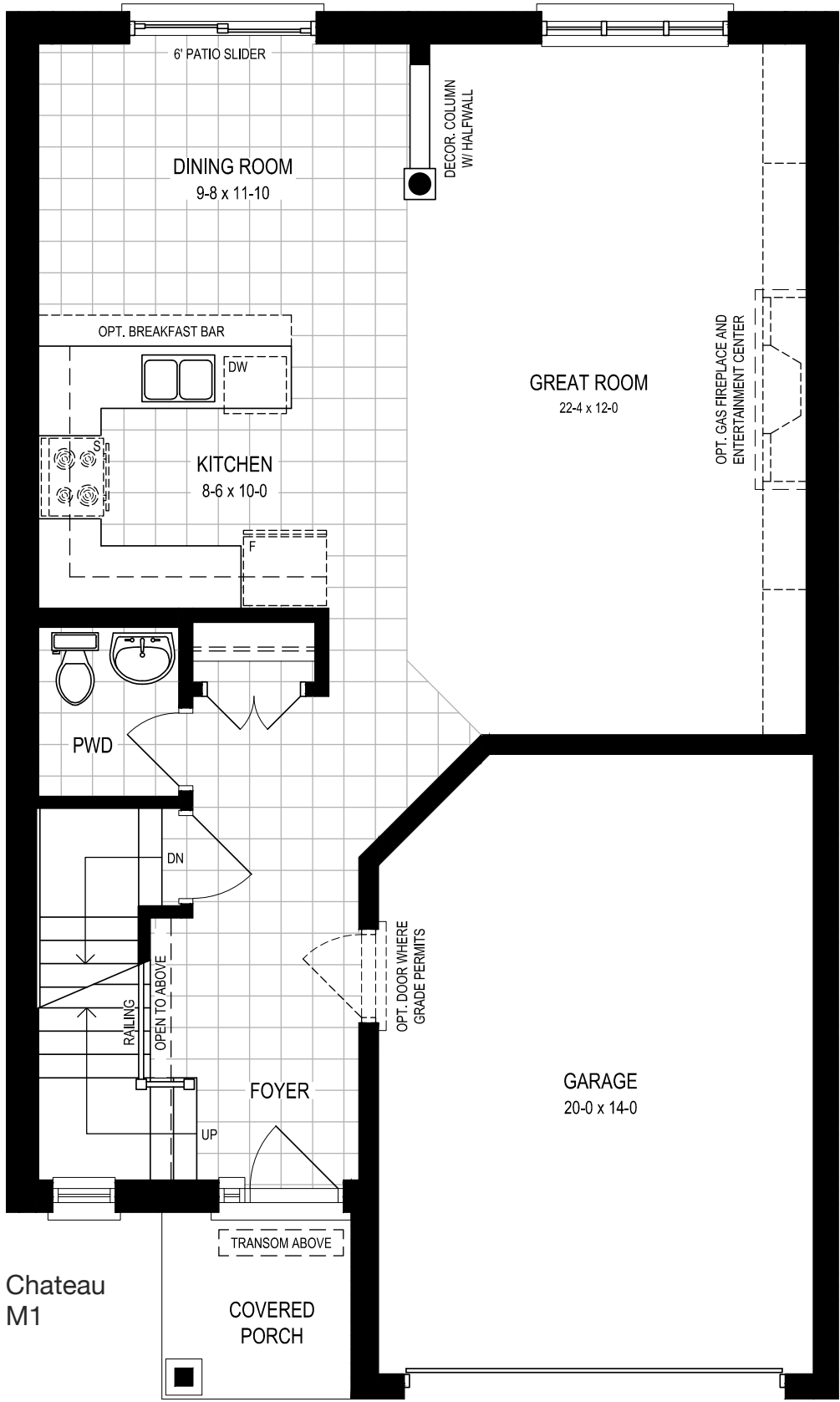
Modern 1,822 sq.ft.  
Chateau 1,819 sq.ft.



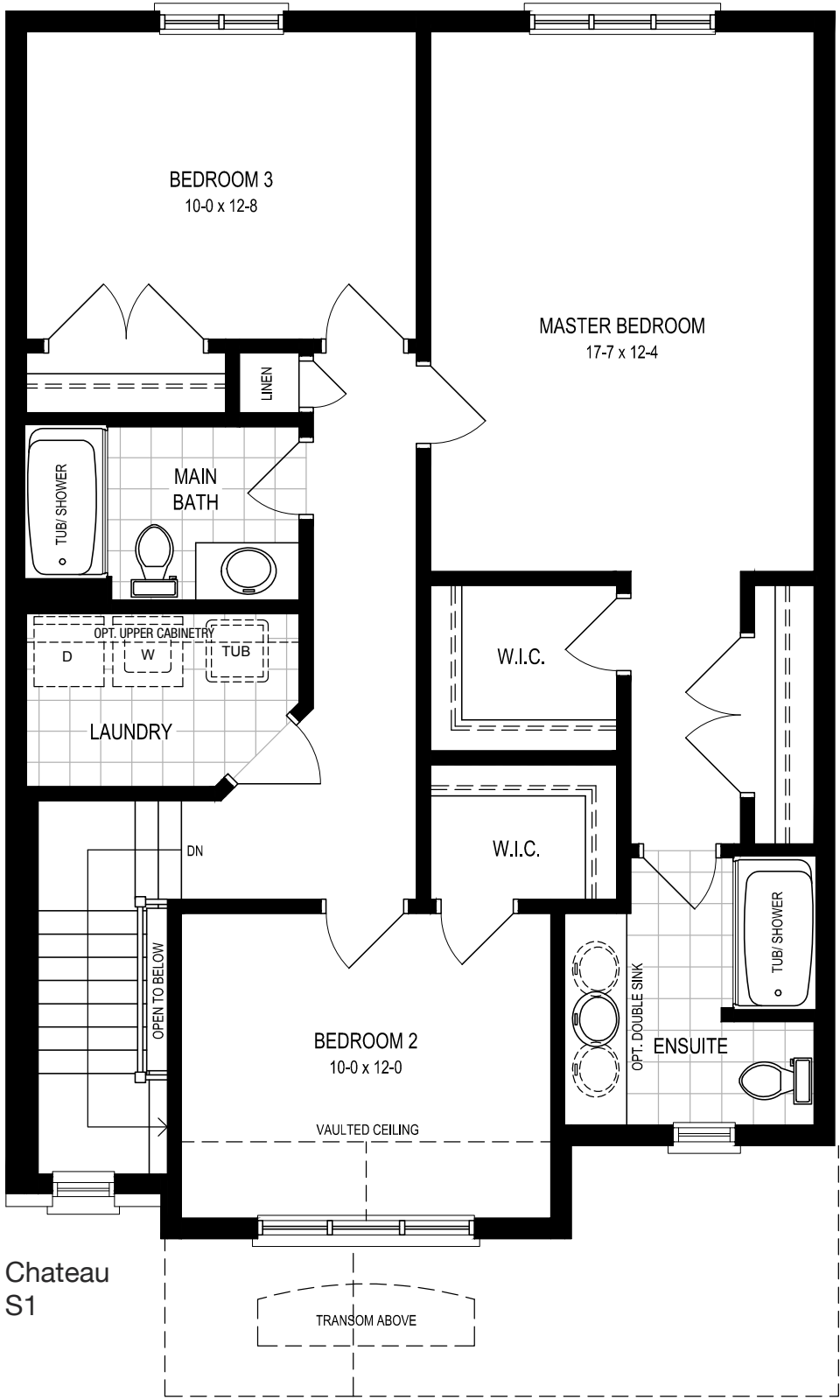
Modern Series



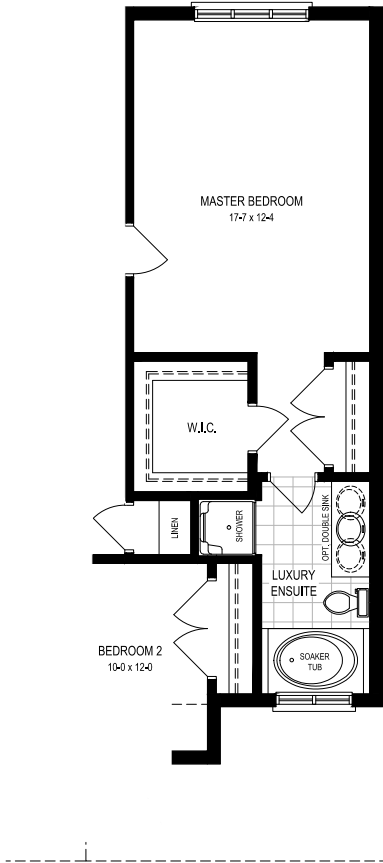
Chateau Series



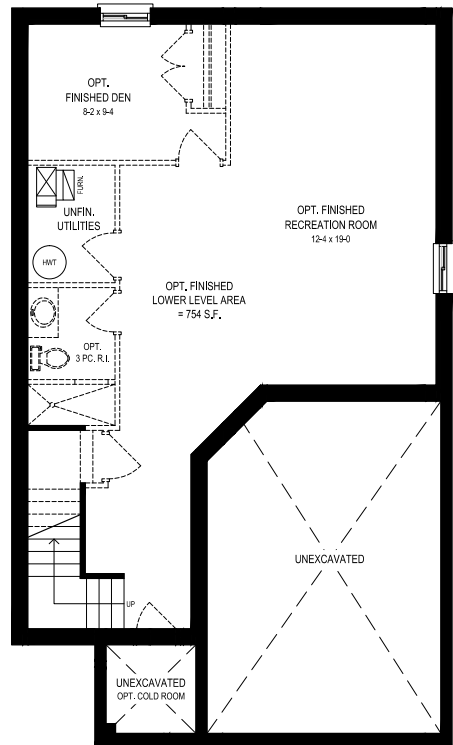
Chateau  
M1



Chateau  
S1



Chateau  
S2



All Elevations  
B1

Main Floor

Floorplans may change with elevation. Artist's concept only. Construction of dwelling may not be exactly as shown. Some features shown may be optional extras at additional cost. Exterior elevations, renderings or sketches are subject to architectural controls, the availability of materials to the Vendor during the construction of the Dwelling, and site conditions. Some windows shown on side elevations may not be available due to the applicable side yard setback. Accordingly, all details, dimensions, treatments, specifications and features shown may be changed by the Vendor, the Municipality, the Developer or the Vendor's control architect, in their sole and unfettered discretion at any time without notice. Actual usable floor space may vary from the stated floor area. Due to site conditions and engineering or structural requirements, individual room dimensions may vary. Square footage is measured using the methods and tolerances prescribed by Bulletin 22 published by the Tarion Warranty Corporation. To view the acceptable measures and tolerances, please visit builder bulletin 22 at [www.tarion.com](http://www.tarion.com). Some windows shown on side elevations may not be available due to the applicable side yard setback. Features identified as "Optional" or "Opt" are an additional cost, and may not be available based on the stage of construction of the home. The location of fixtures such as electrical panels, hot water tanks, sump pumps or furnaces may change due to site conditions or engineering requirements. Features shown "where grade permits" or "subject to grading" maynot be available based on the grading of the land, and may in some cases require adjacent floor areas to be lowered by one riser, or "sunken". E.&O.E. October 2016

Second Floor, Lower Level  
& Enhancements





# THE STONEHAVEN

33' Collection



Floorplans may change with elevation. Artist's concept only. Construction of dwelling may not be exactly as shown. Some features shown may be optional extras at additional cost. Exterior elevations, renderings or sketches are subject to architectural controls, the availability of materials to the Vendor during the construction of the Dwelling, and site conditions. Some windows shown on side elevations may not be available due to the applicable side yard setback. Accordingly, all details, dimensions, treatments, specifications and features shown may be changed by the Vendor, the Municipality, the Developer or the Vendor's control architect, in their sole and unfettered discretion at any time without notice.





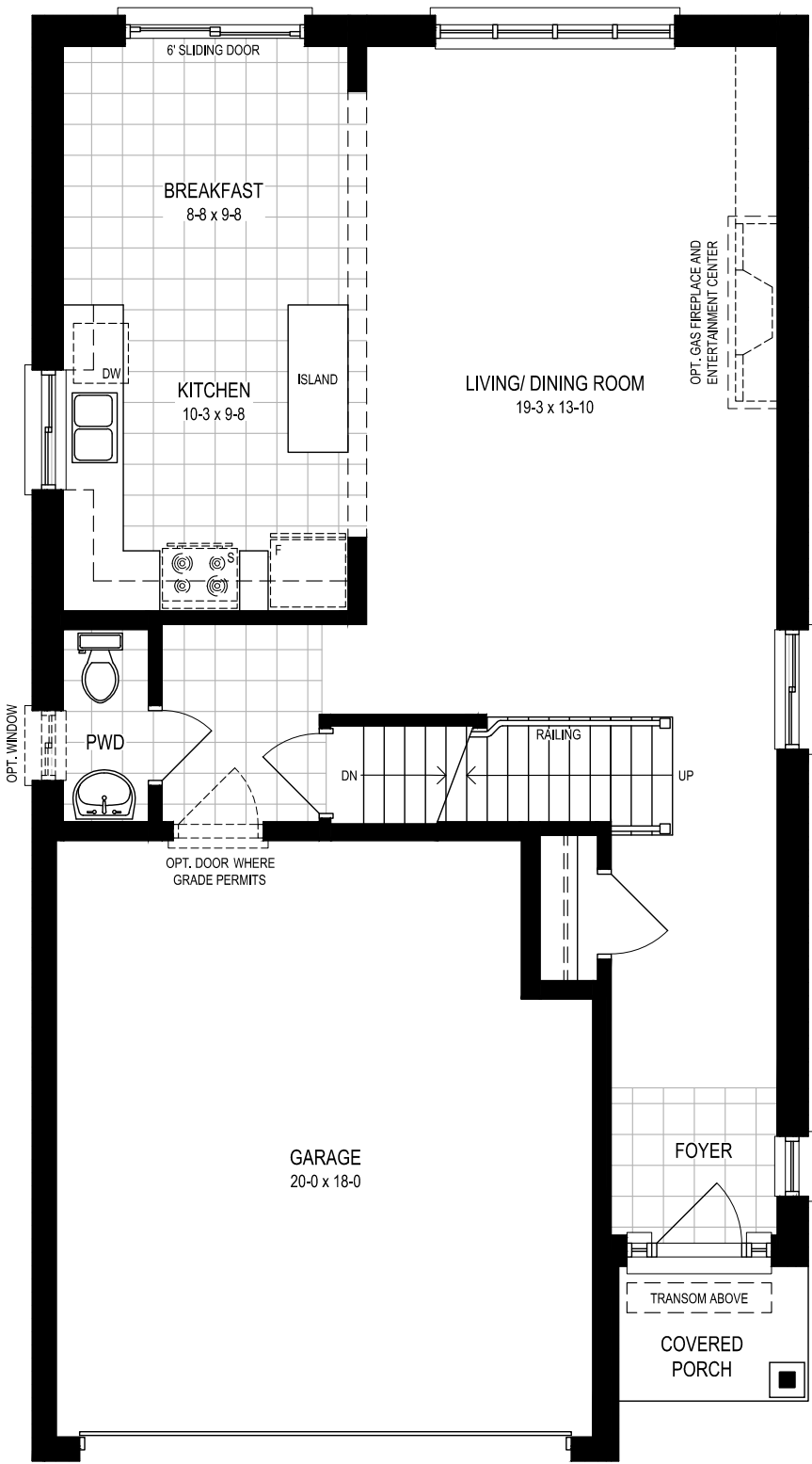
Modern 1,914 sq.ft. includes 67 sq.ft. open to below  
Chateau 1,899 sq.ft. includes 67 sq.ft. open to below



Modern Series



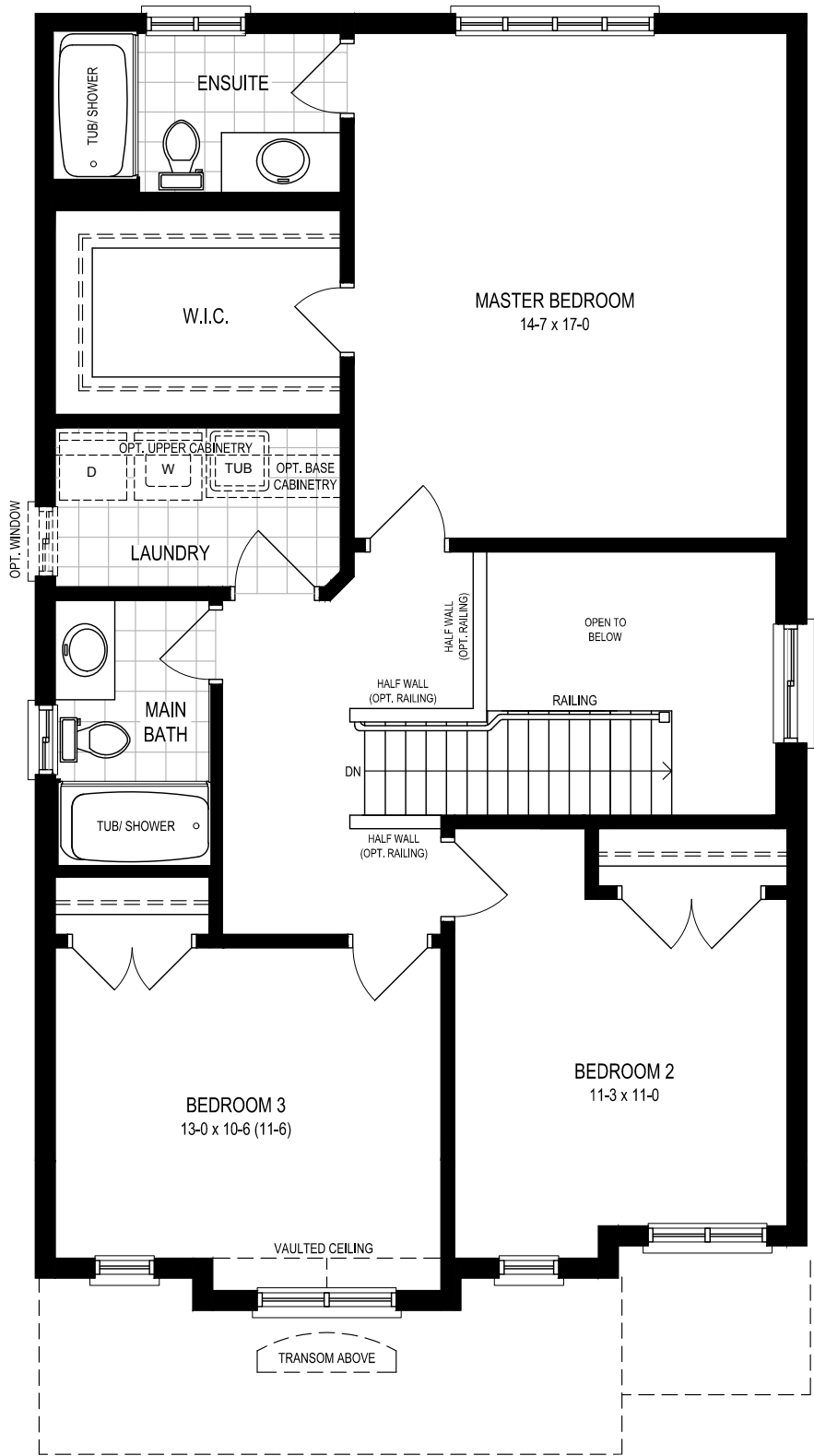
Chateau Series



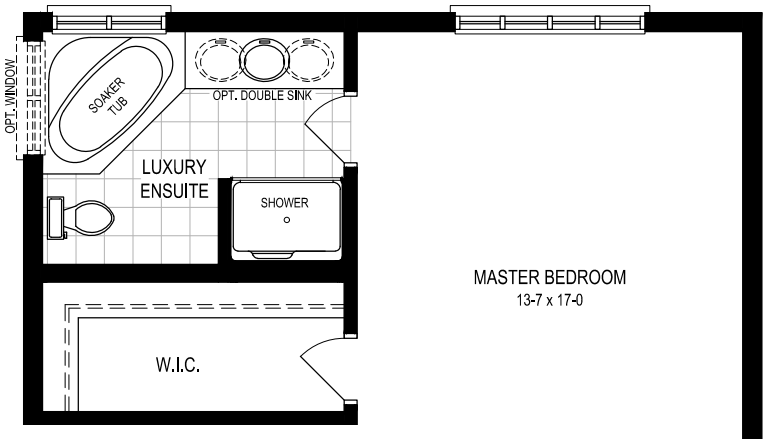
Chateau  
M1

Main Floor

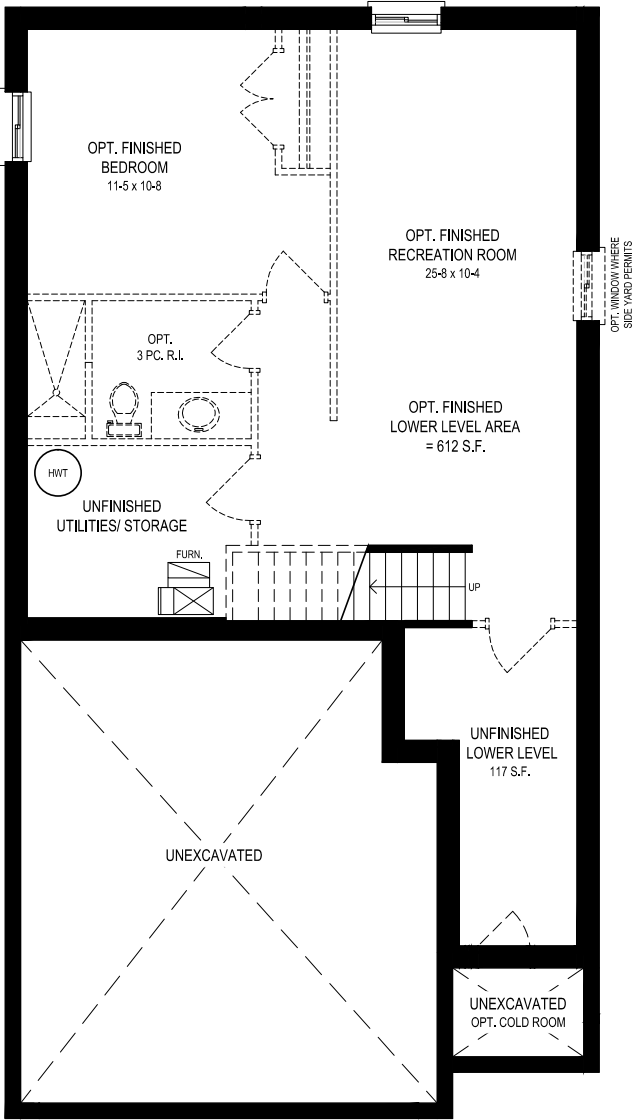
Floorplans may change with elevation. Artist's concept only. Construction of dwelling may not be exactly as shown. Some features shown may be optional extras at additional cost. Exterior elevations, renderings or sketches are subject to architectural controls, the availability of materials to the Vendor during the construction of the Dwelling, and site conditions. Some windows shown on side elevations may not be available due to the applicable side yard setback. Accordingly, all details, dimensions, treatments, specifications and features shown may be changed by the Vendor, the Municipality, the Developer or the Vendor's control architect, in their sole and unfettered discretion at any time without notice. Actual usable floor space may vary from the stated floor area. Due to site conditions and engineering or structural requirements, individual room dimensions may vary. Square footage is measured using the methods and tolerances prescribed by Bulletin 22 published by the Tarion Warranty Corporation. To view the acceptable measures and tolerances, please visit builder bulletin 22 at [www.tarion.com](http://www.tarion.com). Some windows shown on side elevations may not be available due to the applicable side yard setback. Features identified as "Optional" or "Opt" are an additional cost, and may not be available based on the stage of construction of the home. The location of fixtures such as electrical panels, hot water tanks, sump pumps or furnaces may change due to site conditions or engineering requirements. Features shown "where grade permits" or "subject to grading" may not be available based on the grading of the land, and may in some cases require adjacent floor areas to be lowered by one riser, or "sunken". E.&O.E. October 2016



Chateau  
S1



All Elevations  
S2



All Elevations  
B1

Second Floor, Lower Level  
& Enhancements





# THE JUNIPER

33' Collection



Floorplans may change with elevation. Artist's concept only. Construction of dwelling may not be exactly as shown. Some features shown may be optional extras at additional cost. Exterior elevations, renderings or sketches are subject to architectural controls, the availability of materials to the Vendor during the construction of the Dwelling, and site conditions. Some windows shown on side elevations may not be available due to the applicable side yard setback. Accordingly, all details, dimensions, treatments, specifications and features shown may be changed by the Vendor, the Municipality, the Developer or the Vendor's control architect, in their sole and unfettered discretion at any time without notice.





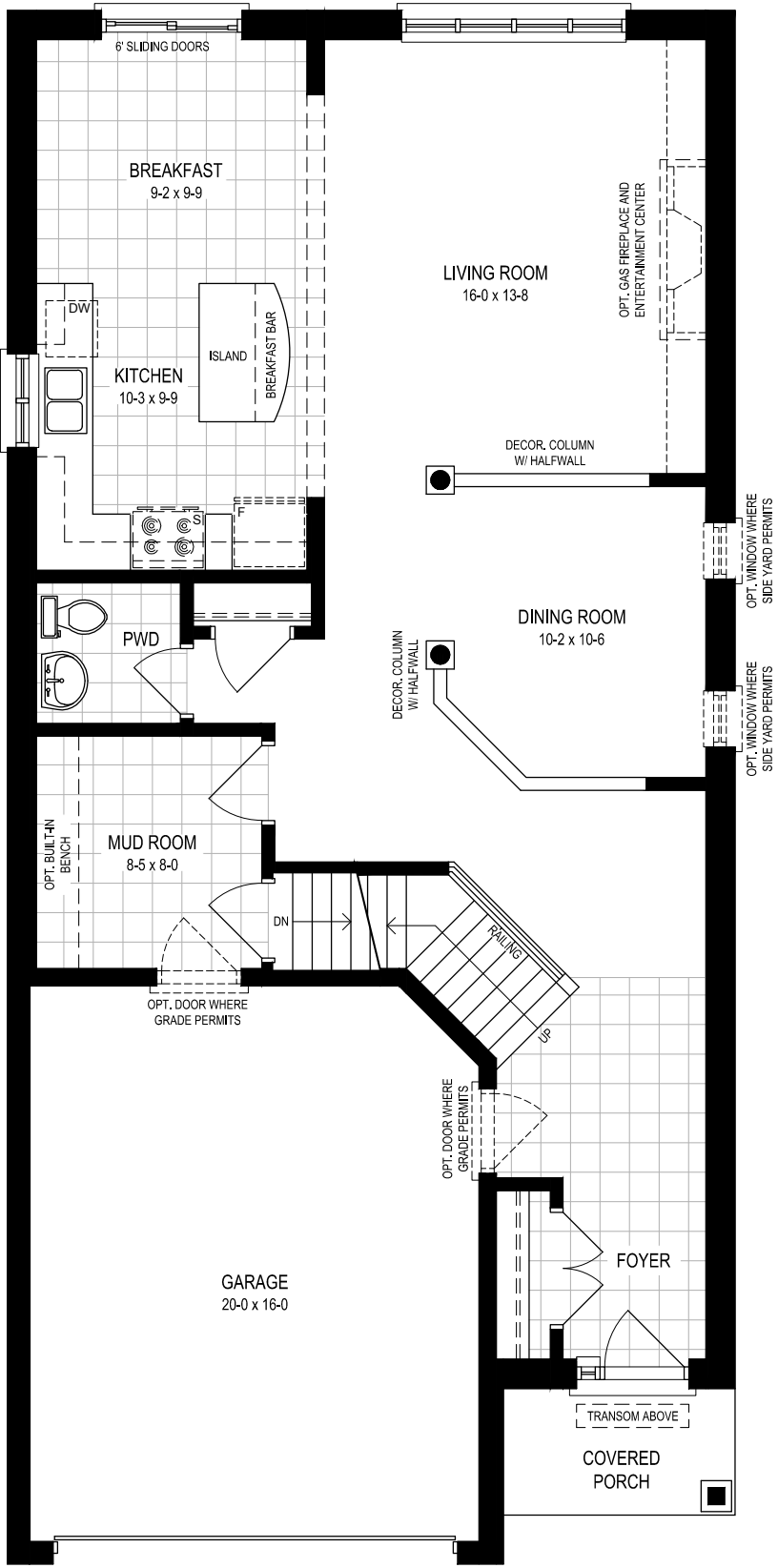
Modern 2,291 sq.ft.  
Chateau 2,304 sq.ft.



Modern Series



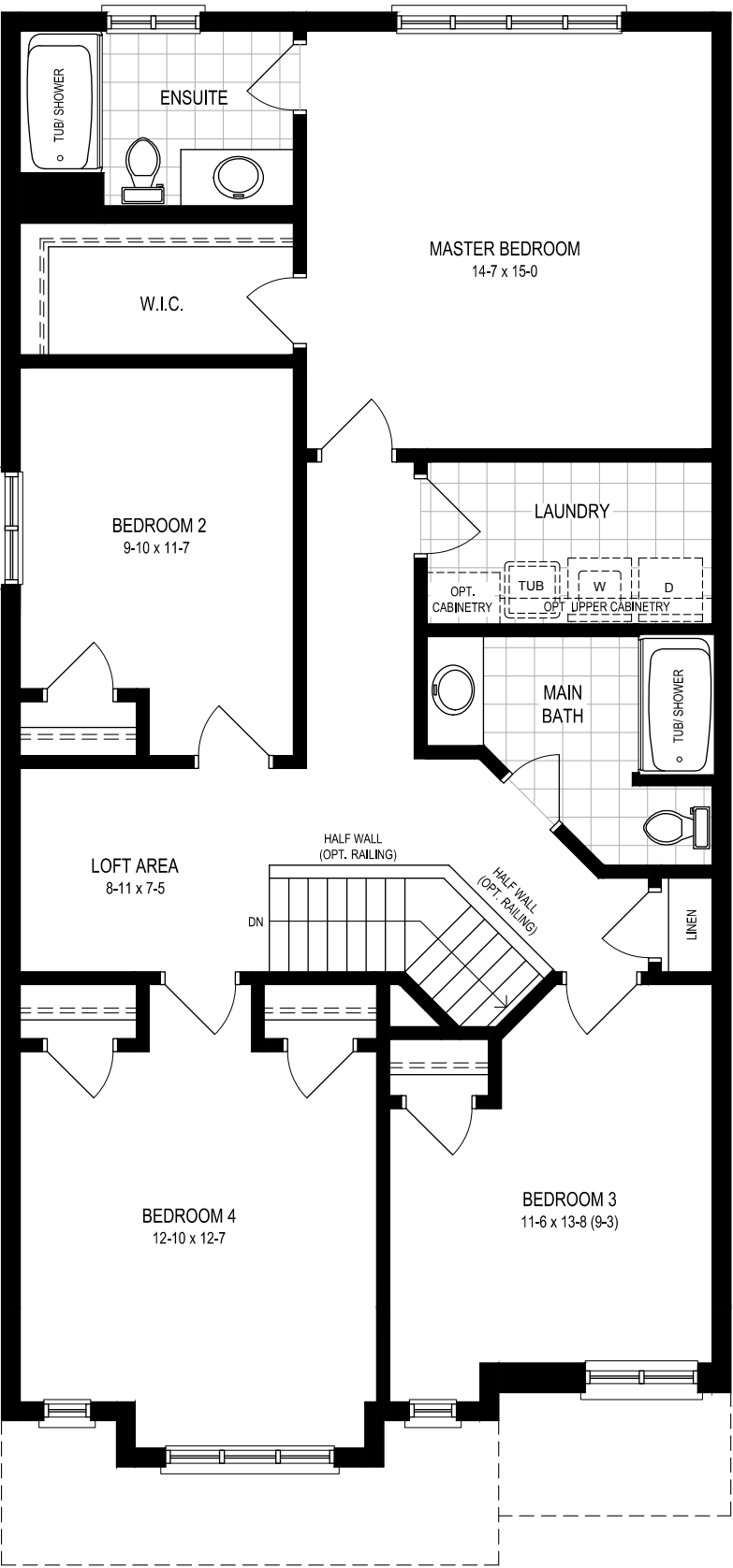
Chateau Series



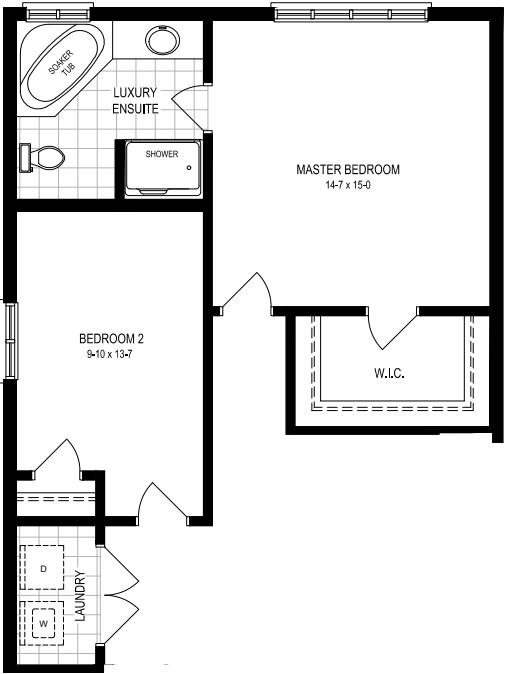
Chateau  
M1

Main Floor

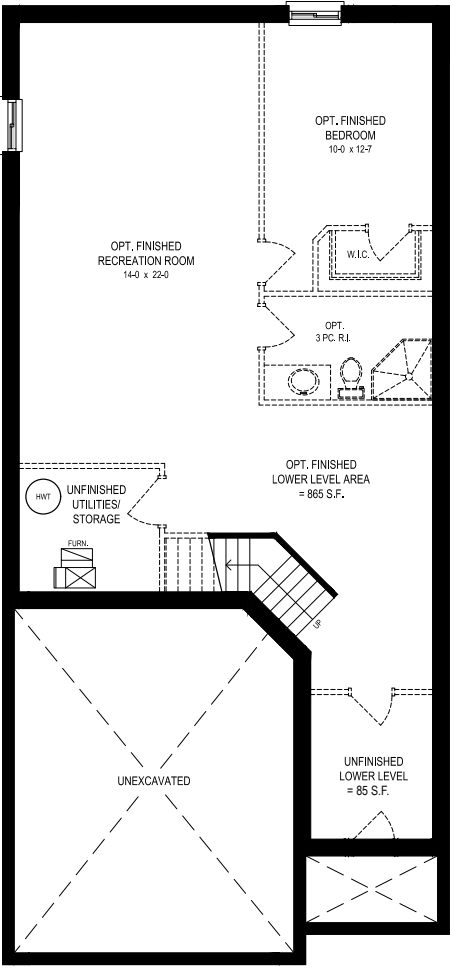
Floorplans may change with elevation. Artist's concept only. Construction of dwelling may not be exactly as shown. Some features shown may be optional extras at additional cost. Exterior elevations, renderings or sketches are subject to architectural controls, the availability of materials to the Vendor during the construction of the Dwelling, and site conditions. Some windows shown on side elevations may not be available due to the applicable side yard setback. Accordingly, all details, dimensions, treatments, specifications and features shown may be changed by the Vendor, the Municipality, the Developer or the Vendor's control architect, in their sole and unfettered discretion at any time without notice. Actual usable floor space may vary from the stated floor area. Due to site conditions and engineering or structural requirements, individual room dimensions may vary. Square footage is measured using the methods and tolerances prescribed by Bulletin 22 published by the Tarion Warranty Corporation. To view the acceptable measures and tolerances, please visit builder bulletin 22 at [www.tarion.com](http://www.tarion.com). Some windows shown on side elevations may not be available due to the applicable side yard setback. Features identified as "Optional" or "Opt" are an additional cost, and may not be available based on the stage of construction of the home. The location of fixtures such as electrical panels, hot water tanks, sump pumps or furnaces may change due to site conditions or engineering requirements. Features shown "where grade permits" or "subject to grading" may not be available based on the grading of the land, and may in some cases require adjacent floor areas to be lowered by one riser, or "sunken". E.&O.E. October 2016



Chateau  
S1



All Elevations  
S2



All Elevations  
B1

Second Floor, Lower Level  
& Enhancements





# THE CEDARWOOD

## 33' Collection



Floorplans may change with elevation. Artist's concept only. Construction of dwelling may not be exactly as shown. Some features shown may be optional extras at additional cost. Exterior elevations, renderings or sketches are subject to architectural controls, the availability of materials to the Vendor during the construction of the Dwelling, and site conditions. Some windows shown on side elevations may not be available due to the applicable side yard setback. Accordingly, all details, dimensions, treatments, specifications and features shown may be changed by the Vendor, the Municipality, the Developer or the Vendor's control architect, in their sole and unfettered discretion at any time without notice.





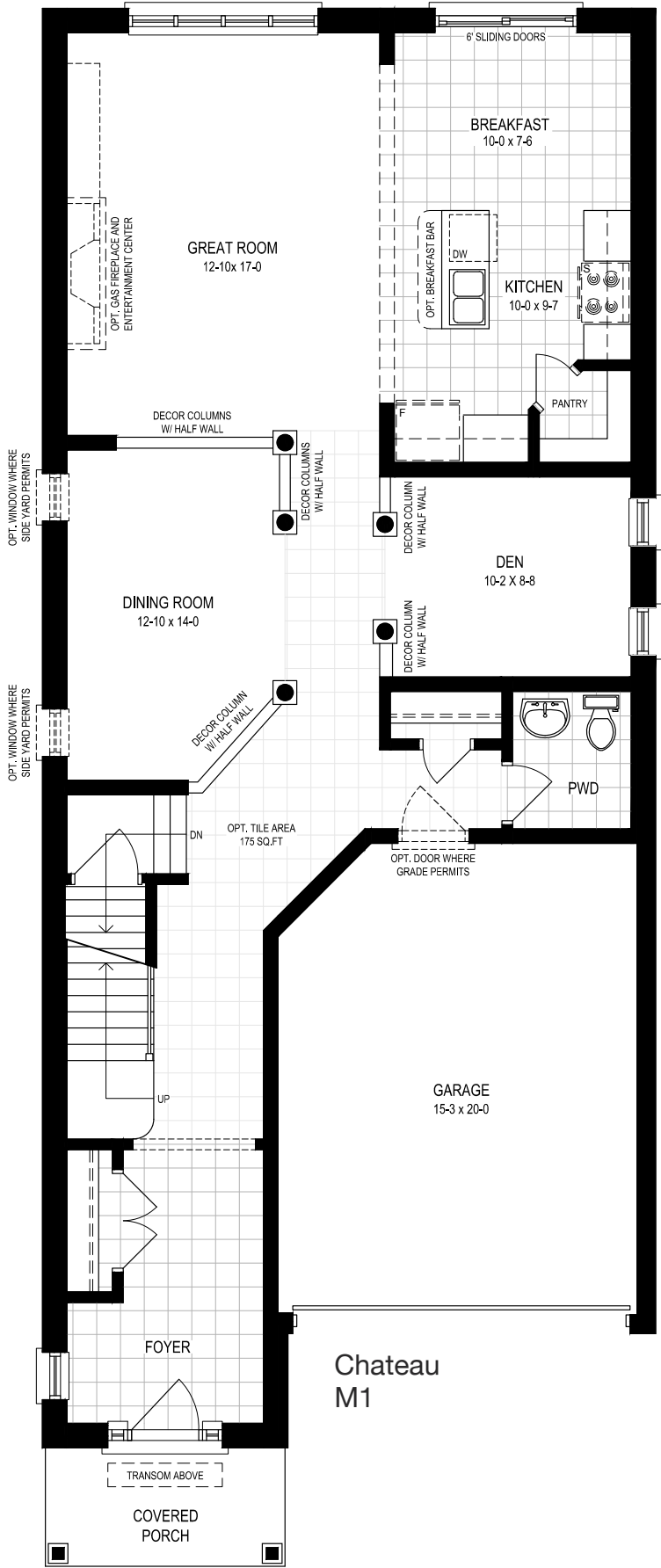
Modern 2,614 sq.ft. includes 38 sq.ft. open to below  
Chateau 2,614 sq.ft. includes 38 sq.ft. open to below



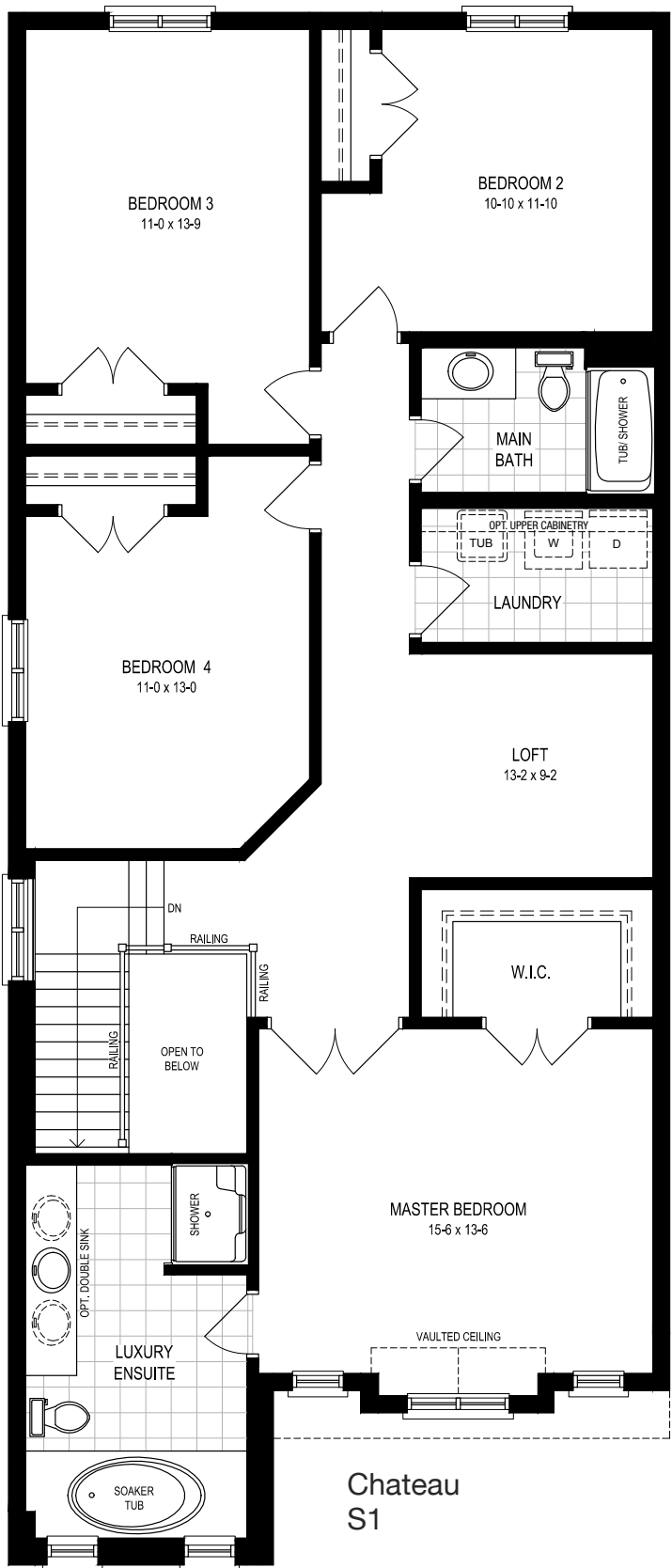
Modern Series



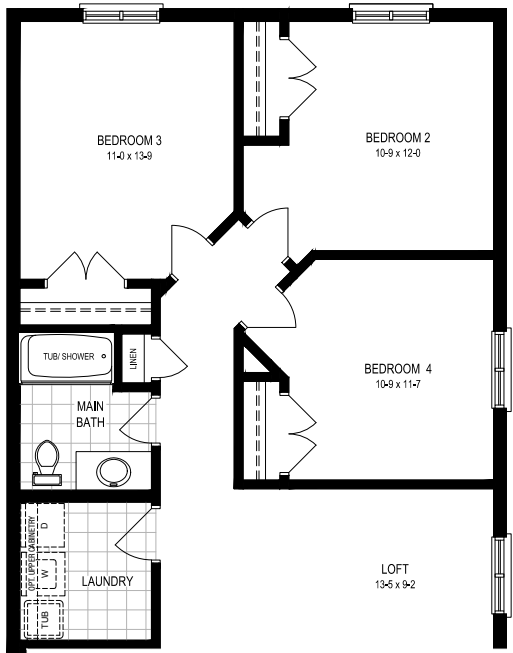
Chateau Series



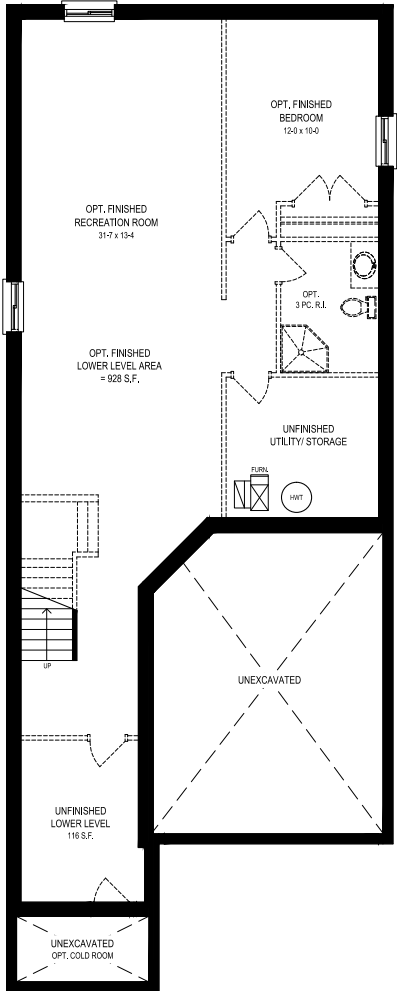
Chateau  
M1



Chateau  
S1



All Elevations  
S2



All Elevations  
B1

## Main Floor

Floorplans may change with elevation. Artist's concept only. Construction of dwelling may not be exactly as shown. Some features shown may be optional extras at additional cost. Exterior elevations, renderings or sketches are subject to architectural controls, the availability of materials to the Vendor during the construction of the Dwelling, and site conditions. Some windows shown on side elevations may not be available due to the applicable side yard setback. Accordingly, all details, dimensions, treatments, specifications and features shown may be changed by the Vendor, the Municipality, the Developer or the Vendor's control architect, in their sole and unfettered discretion at any time without notice. Actual usable floor space may vary from the stated floor area. Due to site conditions and engineering or structural requirements, individual room dimensions may vary. Square footage is measured using the methods and tolerances prescribed by Bulletin 22 published by the Tarion Warranty Corporation. To view the acceptable measures and tolerances, please visit builder bulletin 22 at [www.tarion.com](http://www.tarion.com). Some windows shown on side elevations may not be available due to the applicable side yard setback. Features identified as "Optional" or "Opt" are an additional cost, and may not be available based on the stage of construction of the home. The location of fixtures such as electrical panels, hot water tanks, sump pumps or furnaces may change due to site conditions or engineering requirements. Features shown "where grade permits" or "subject to grading" may not be available based on the grading of the land, and may in some cases require adjacent floor areas to be lowered by one riser, or "sunken". E.&O.E. October 2016

## Second Floor, Lower Level & Enhancements





# THE REGALVIEW

36' Collection



Floorplans may change with elevation. Artist's concept only. Construction of dwelling may not be exactly as shown. Some features shown may be optional extras at additional cost. Exterior elevations, renderings or sketches are subject to architectural controls, the availability of materials to the Vendor during the construction of the Dwelling, and site conditions. Some windows shown on side elevations may not be available due to the applicable side yard setback. Accordingly, all details, dimensions, treatments, specifications and features shown may be changed by the Vendor, the Municipality, the Developer or the Vendor's control architect, in their sole and unfettered discretion at any time without notice.





# THE REGALVIEW

- Modern 1,389 sq.ft. includes 24 sq.ft. of finished vestibule
- Chateau 1,387 sq.ft. includes 24 sq.ft. of finished vestibule
- Tuscan 1,380 sq.ft. includes 24 sq.ft. of finished vestibule



Modern Series



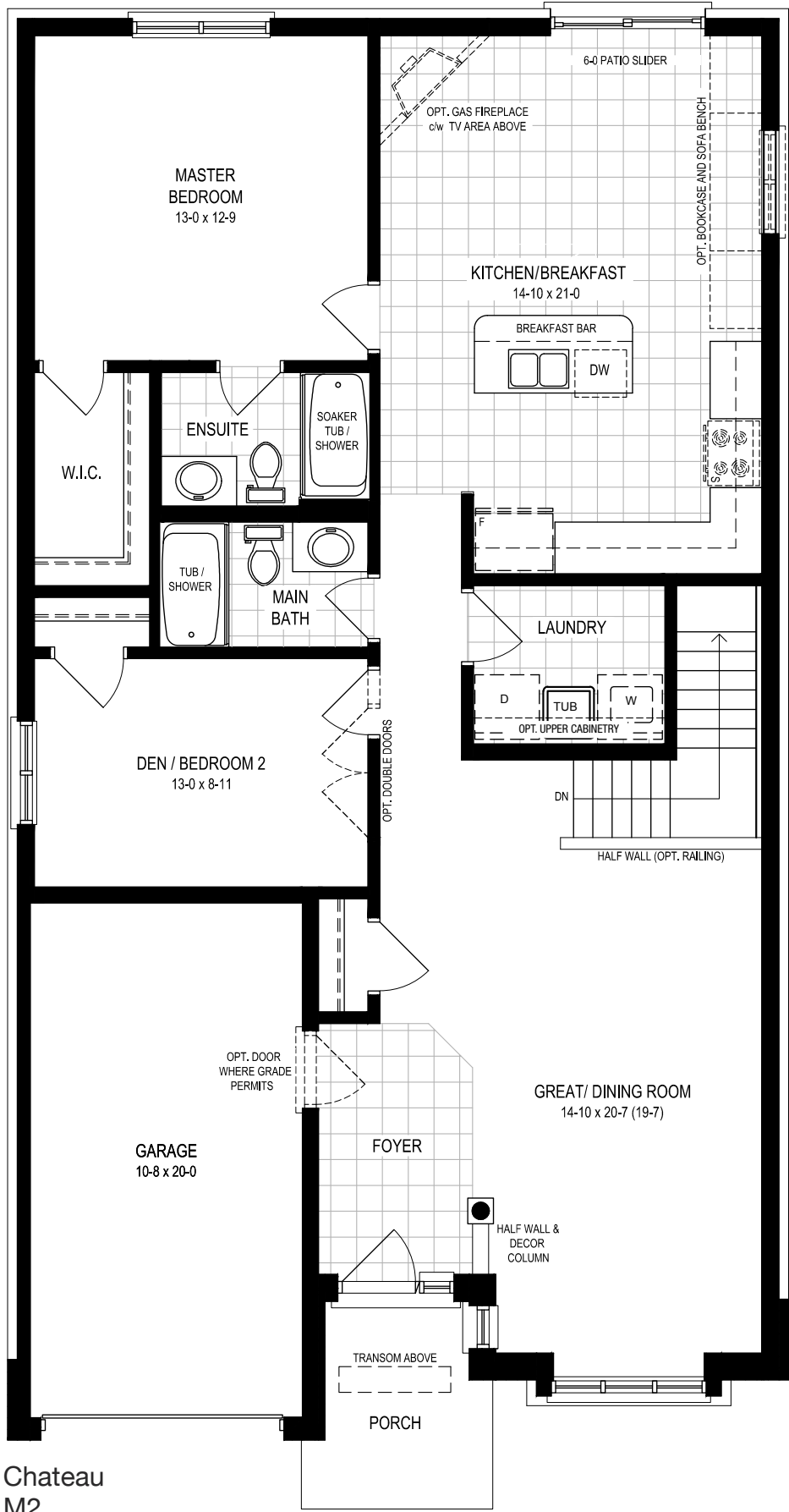
Chateau Series



Tuscan Series



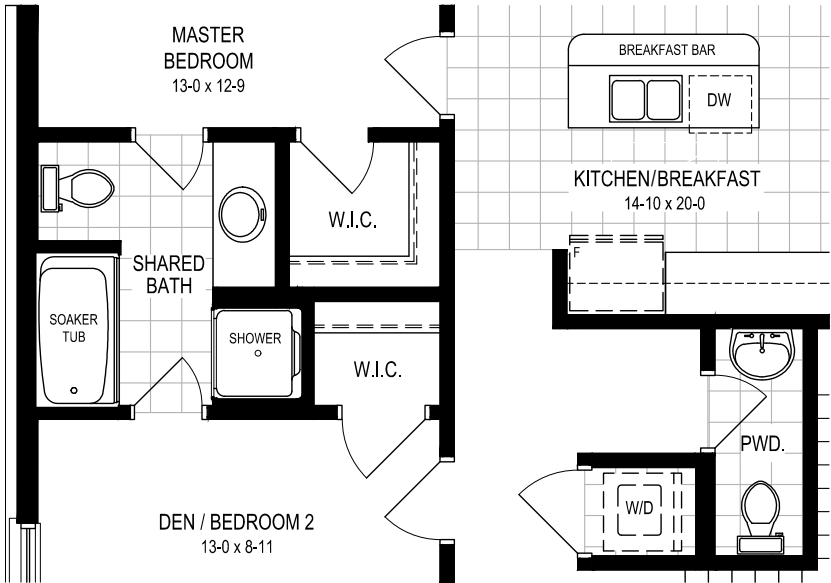
# PARK AVE CENTRAL PARK



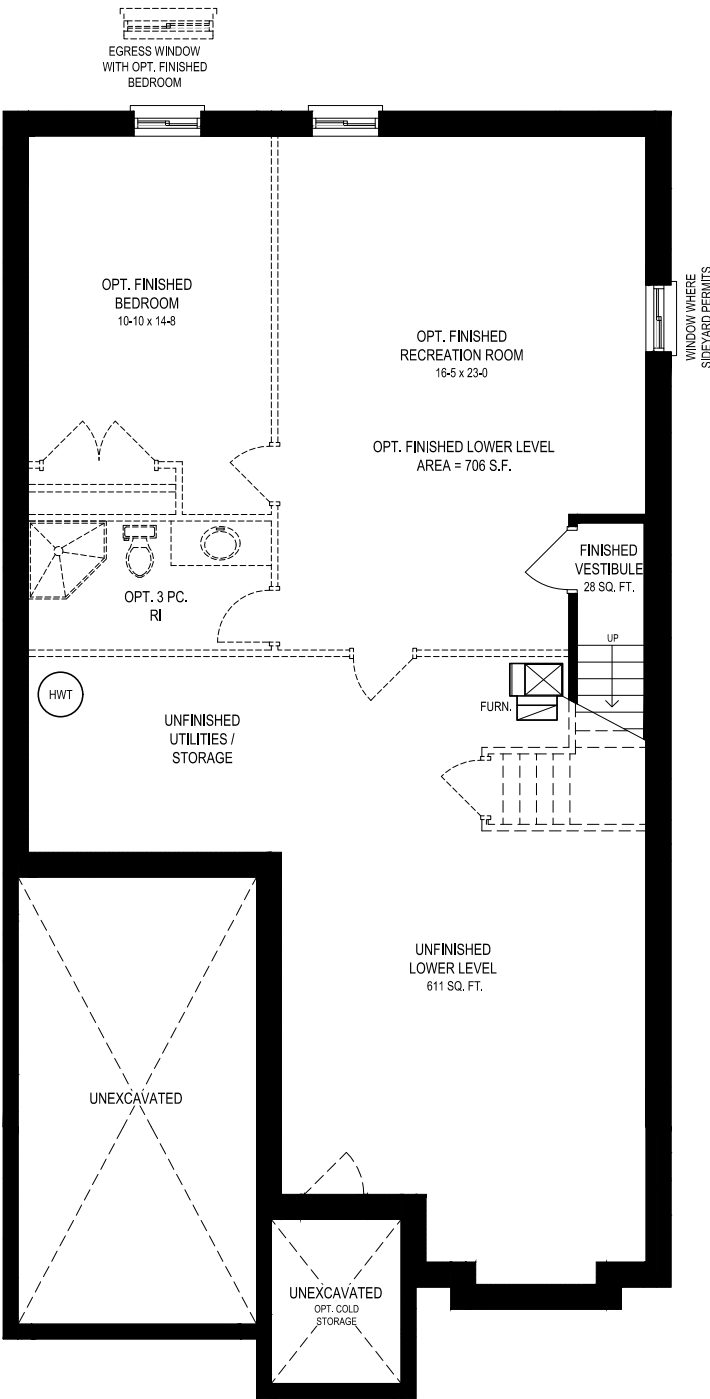
Chateau  
M2

## Main Floor

Floorplans may change with elevation. Artist's concept only. Construction of dwelling may not be exactly as shown. Some features shown may be optional extras at additional cost. Exterior elevations, renderings or sketches are subject to architectural controls, the availability of materials to the Vendor during the construction of the Dwelling, and site conditions. Some windows shown on side elevations may not be available due to the applicable side yard setback. Accordingly, all details, dimensions, treatments, specifications and features shown may be changed by the Vendor, the Municipality, the Developer or the Vendor's control architect, in their sole and unfettered discretion at any time without notice. Actual usable floor space may vary from the stated floor area. Due to site conditions and engineering or structural requirements, individual room dimensions may vary. Square footage is measured using the methods and tolerances prescribed by Bulletin 22 published by the Tarion Warranty Corporation. To view the acceptable measures and tolerances, please visit builder bulletin 22 at [www.tarion.com](http://www.tarion.com). Some windows shown on side elevations may not be available due to the applicable side yard setback. Features identified as "Optional" or "Opt" are an additional cost, and may not be available based on the stage of construction of the home. The location of fixtures such as electrical panels, hot water tanks, sump pumps or furnaces may change due to site conditions or engineering requirements. Features shown "where grade permits" or "subject to grading" may not be available based on the grading of the land, and may in some cases require adjacent floor areas to be lowered by one riser, or "sunken". E.&O.E. October 2016



All Elevations  
M3



Chateau  
B1

## Lower Level & Enhancements





# THE SILKWOOD II

36' Collection



Floorplans may change with elevation. Artist's concept only. Construction of dwelling may not be exactly as shown. Some features shown may be optional extras at additional cost. Exterior elevations, renderings or sketches are subject to architectural controls, the availability of materials to the Vendor during the construction of the Dwelling, and site conditions. Some windows shown on side elevations may not be available due to the applicable side yard setback. Accordingly, all details, dimensions, treatments, specifications and features shown may be changed by the Vendor, the Municipality, the Developer or the Vendor's control architect, in their sole and unfettered discretion at any time without notice.



# THE SILKWOOD II

Modern 1,843 sq.ft. includes 38 sq.ft. open to below  
Chateau 1,840 sq.ft. includes 38 sq.ft. open to below



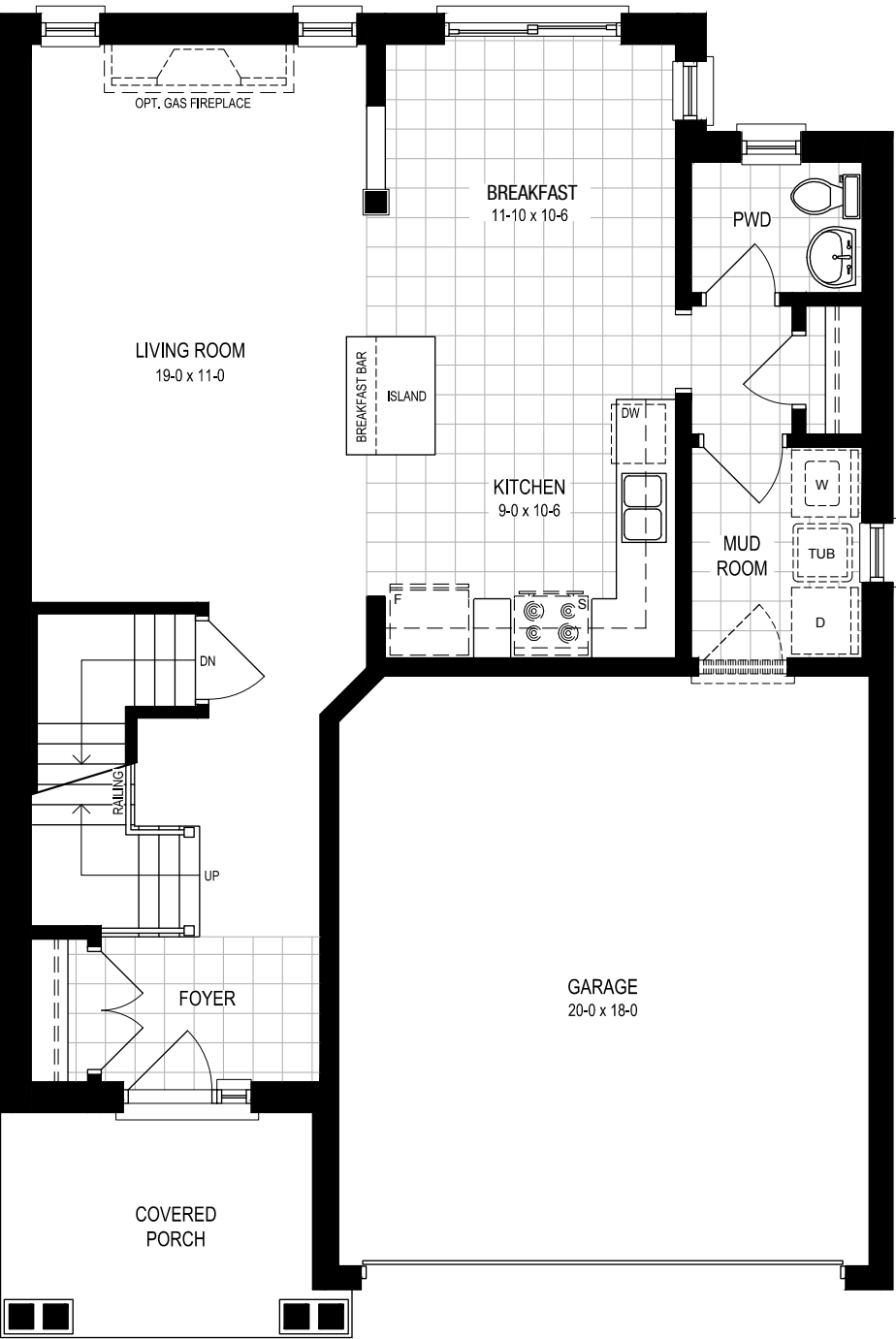
Modern Series



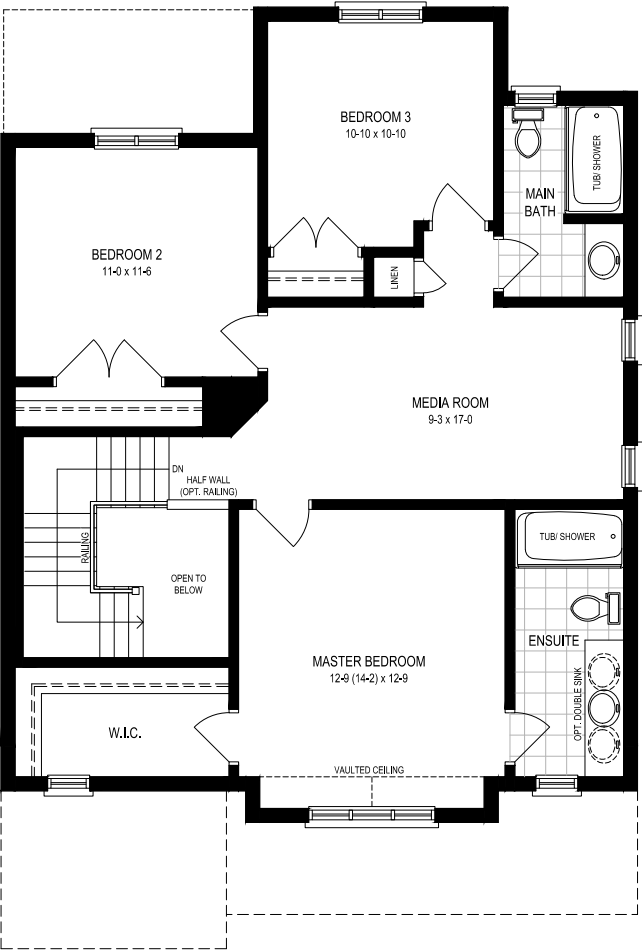
Chateau Series



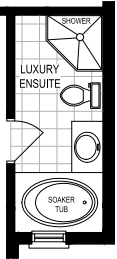
## PARK AVE CENTRAL PARK



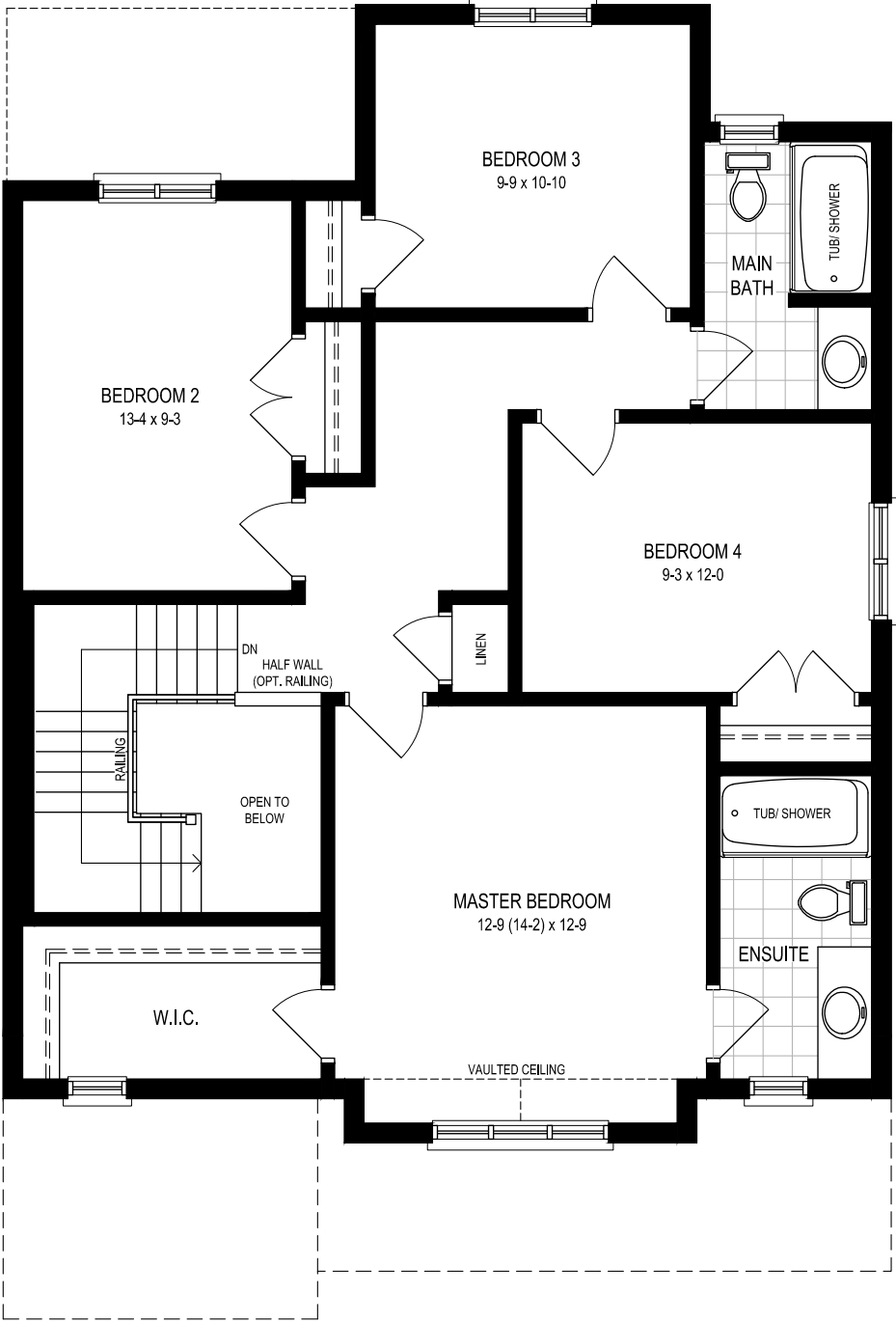
Chateau  
M1



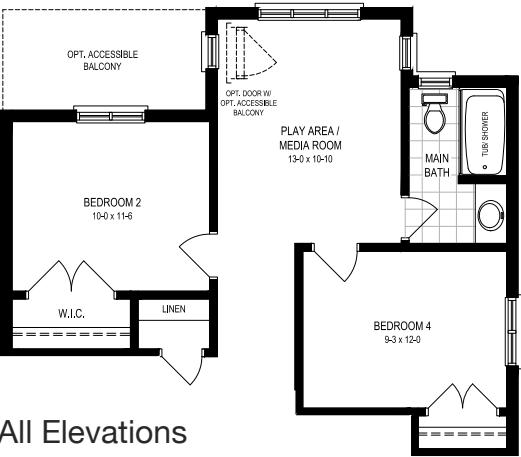
Chateau  
S1



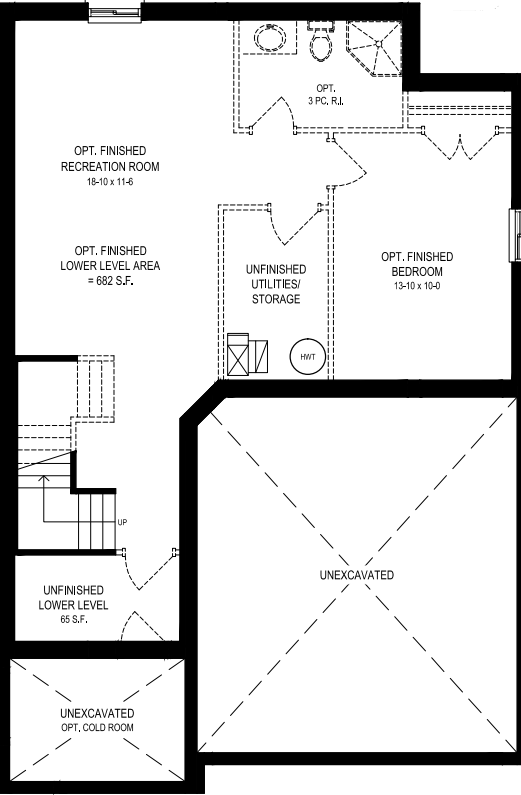
Chateau  
Optional  
S1A



Chateau  
S2



All Elevations  
S3



All Elevations  
B1

### Main Floor, Second Floor & Enhancements

Floorplans may change with elevation. Artist's concept only. Construction of dwelling may not be exactly as shown. Some features shown may be optional extras at additional cost. Exterior elevations, renderings or sketches are subject to architectural controls, the availability of materials to the Vendor during the construction of the Dwelling, and site conditions. Some windows shown on side elevations may not be available due to the applicable side yard setback. Accordingly, all details, dimensions, treatments, specifications and features shown may be changed by the Vendor, the Municipality, the Developer or the Vendor's control architect, in their sole and unfettered discretion at any time without notice. Actual usable floor space may vary from the stated floor area. Due to site conditions and engineering or structural requirements, individual room dimensions may vary. Square footage is measured using the methods and tolerances prescribed by Bulletin 22 published by the Tarion Warranty Corporation. To view the acceptable measures and tolerances, please visit builder bulletin 22 at [www.tarion.com](http://www.tarion.com). Some windows shown on side elevations may not be available due to the applicable side yard setback. Features identified as "Optional" or "Opt" are an additional cost, and may not be available based on the stage of construction of the home. The location of fixtures such as electrical panels, hot water tanks, sump pumps or furnaces may change due to site conditions or engineering requirements. Features shown "where grade permits" or "subject to grading" may not be available based on the grading of the land, and may in some cases require adjacent floor areas to be lowered by one riser, or "sunken". E.&O.E. October 2016

### Second Floor, Lower Level & Enhancements





THE  
**KINGSFOREST**  
36' Collection



Floorplans may change with elevation. Artist's concept only. Construction of dwelling may not be exactly as shown. Some features shown may be optional extras at additional cost. Exterior elevations, renderings or sketches are subject to architectural controls, the availability of materials to the Vendor during the construction of the Dwelling, and site conditions. Some windows shown on side elevations may not be available due to the applicable side yard setback. Accordingly, all details, dimensions, treatments, specifications and features shown may be changed by the Vendor, the Municipality, the Developer or the Vendor's control architect, in their sole and unfettered discretion at any time without notice.



# THE KINGSFOREST

Modern 1,956 sq.ft.  
Chateau 1,956 sq.ft.

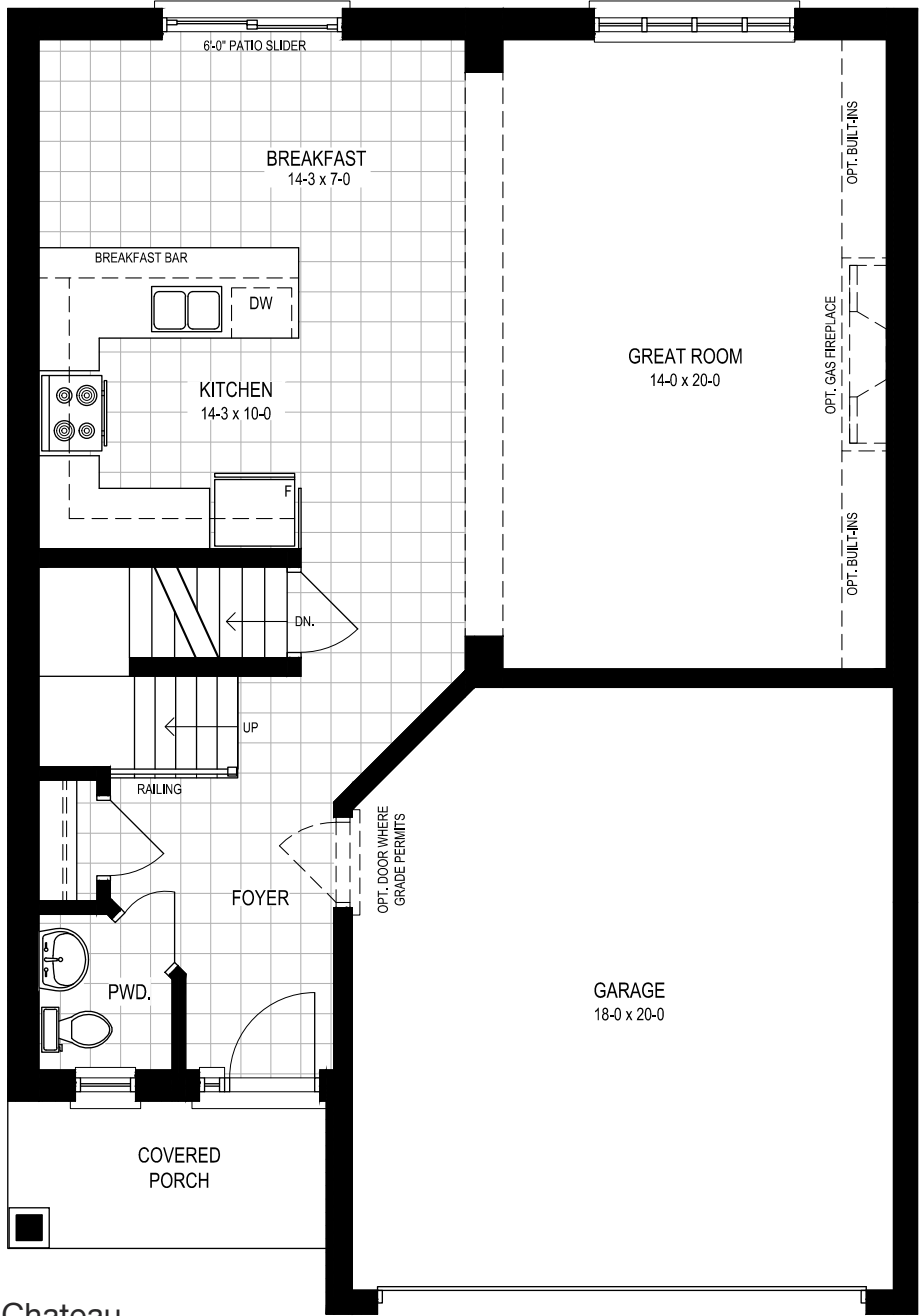


Modern Series

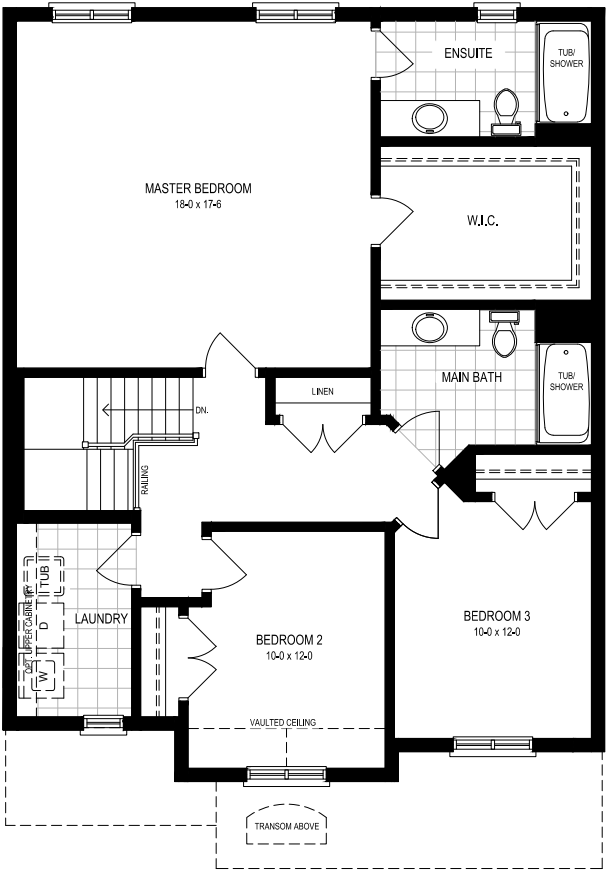


Chateau Series

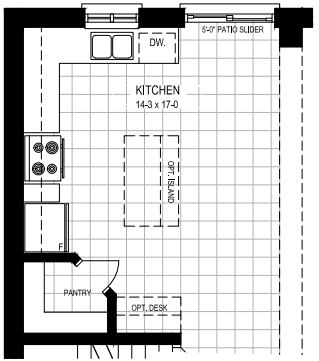
# PARK AVE CENTRAL PARK



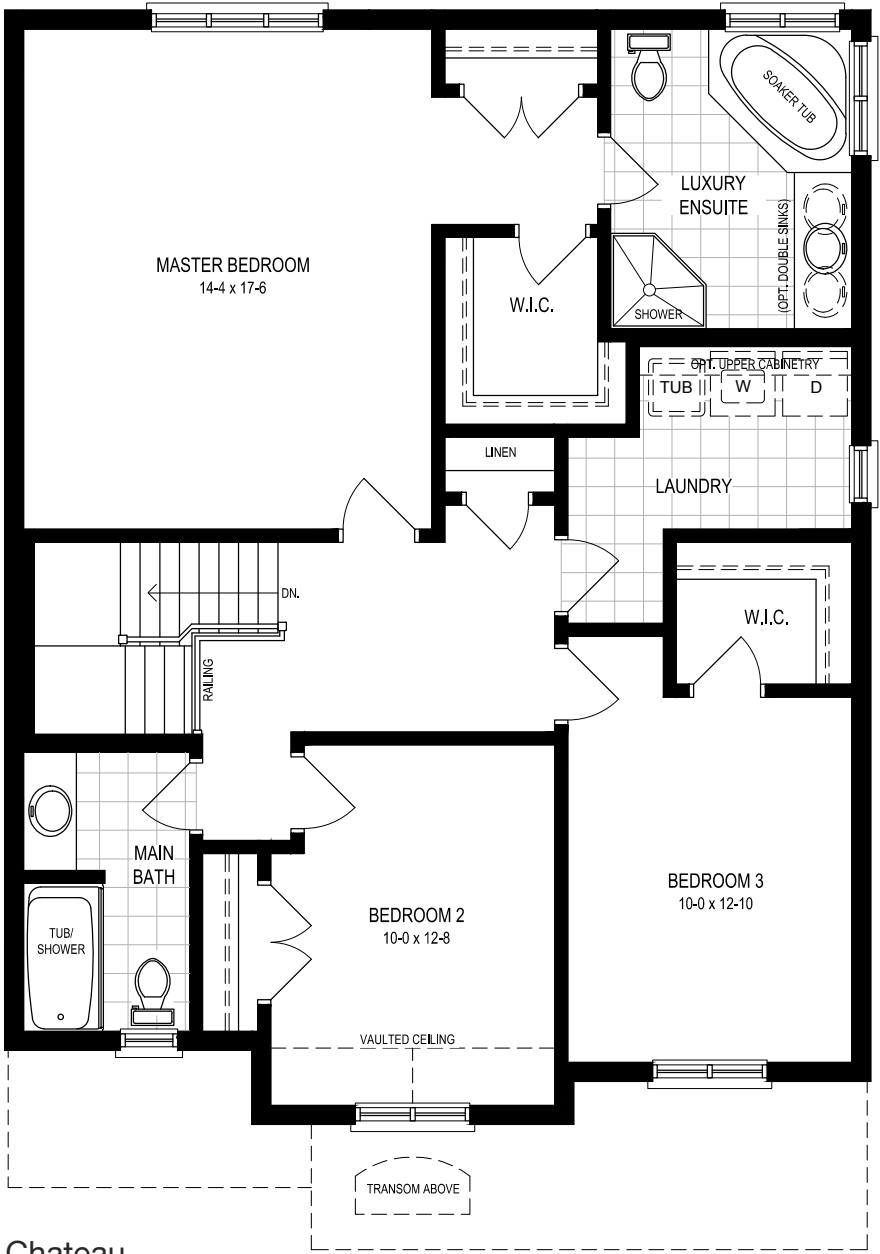
Chateau M1



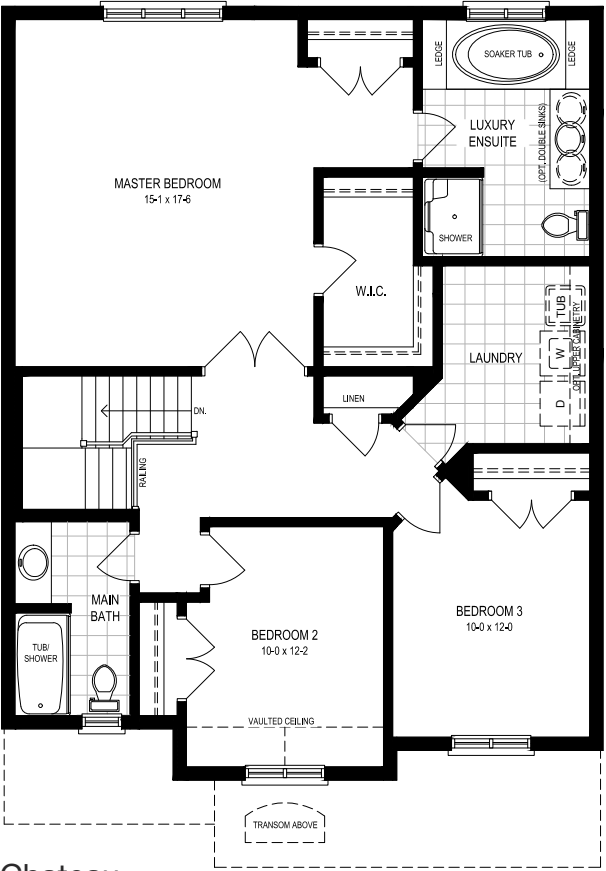
Chateau S1



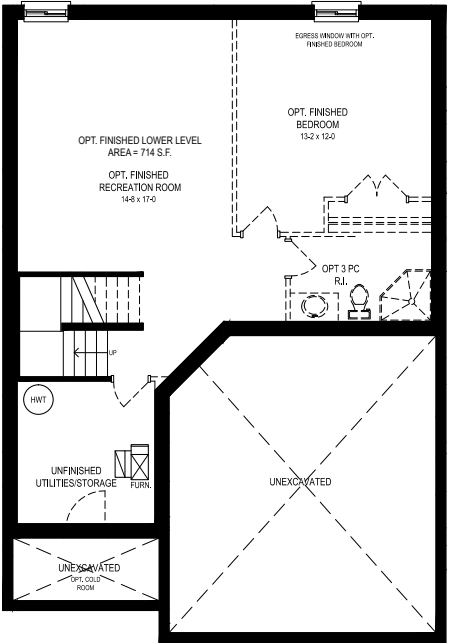
All Elevations M2



Chateau S2



Chateau S3



Chateau B1

## Main Floor, Second Floor & Enhancements

Floorplans may change with elevation. Artist's concept only. Construction of dwelling may not be exactly as shown. Some features shown may be optional extras at additional cost. Exterior elevations, renderings or sketches are subject to architectural controls, the availability of materials to the Vendor during the construction of the Dwelling, and site conditions. Some windows shown on side elevations may not be available due to the applicable side yard setback. Accordingly, all details, dimensions, treatments, specifications and features shown may be changed by the Vendor, the Municipality, the Developer or the Vendor's control architect, in their sole and unfettered discretion at any time without notice. Actual usable floor space may vary from the stated floor area. Due to site conditions and engineering or structural requirements, individual room dimensions may vary. Square footage is measured using the methods and tolerances prescribed by Bulletin 22 published by the Tarion Warranty Corporation. To view the acceptable measures and tolerances, please visit builder bulletin 22 at [www.tarion.com](http://www.tarion.com). Some windows shown on side elevations may not be available due to the applicable side yard setback. Features identified as "Optional" or "Opt" are an additional cost, and may not be available based on the stage of construction of the home. The location of fixtures such as electrical panels, hot water tanks, sump pumps or furnaces may change due to site conditions or engineering requirements. Features shown "where grade permits" or "subject to grading" may not be available based on the grading of the land, and may in some cases require adjacent floor areas to be lowered by one riser, or "sunken". E.&O.E. October 2016

## Second Floor, Lower Level & Enhancements

LOSANI  
HOMES



# THE MACINTOSH

36' Collection



Floorplans may change with elevation. Artist's concept only. Construction of dwelling may not be exactly as shown. Some features shown may be optional extras at additional cost. Exterior elevations, renderings or sketches are subject to architectural controls, the availability of materials to the Vendor during the construction of the Dwelling, and site conditions. Some windows shown on side elevations may not be available due to the applicable side yard setback. Accordingly, all details, dimensions, treatments, specifications and features shown may be changed by the Vendor, the Municipality, the Developer or the Vendor's control architect, in their sole and unfettered discretion at any time without notice.



# THE MACINTOSH

Modern 2,010 sq.ft.  
Chateau 2,006 sq.ft.

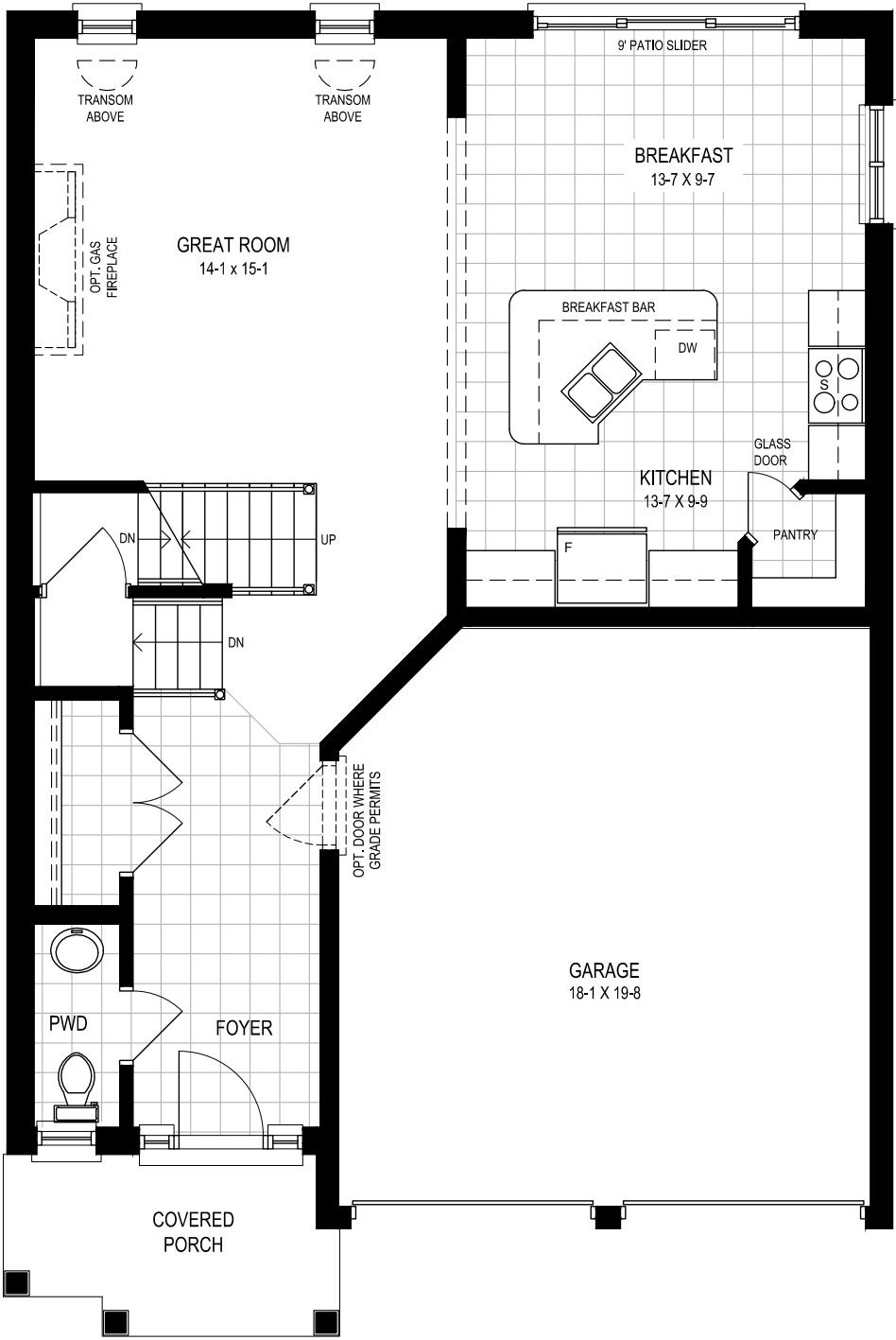


Modern Series

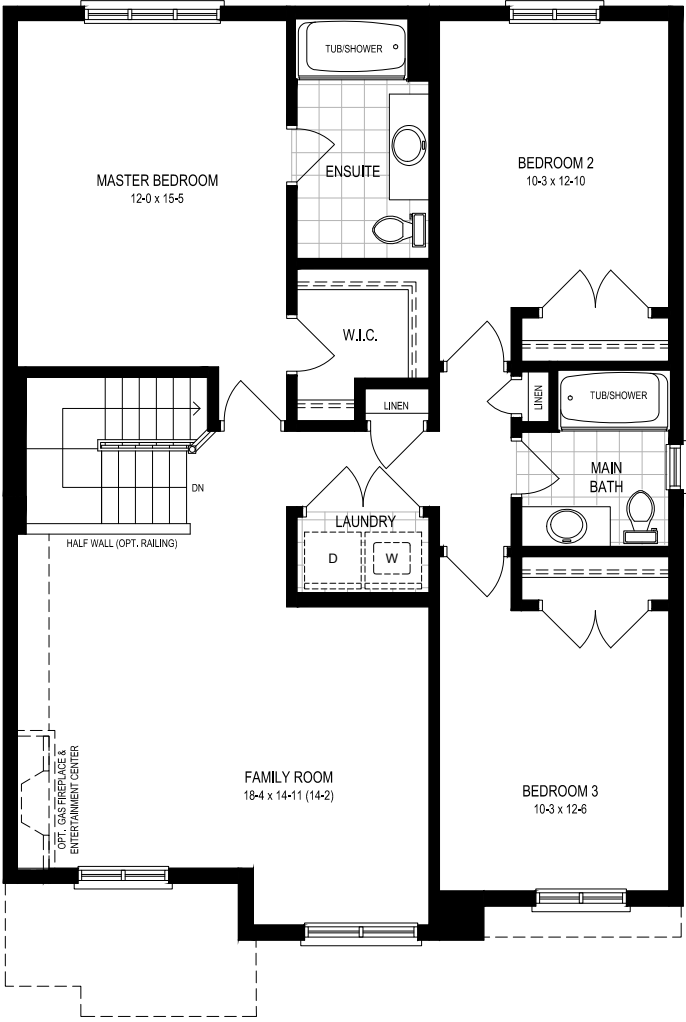


Chateau Series

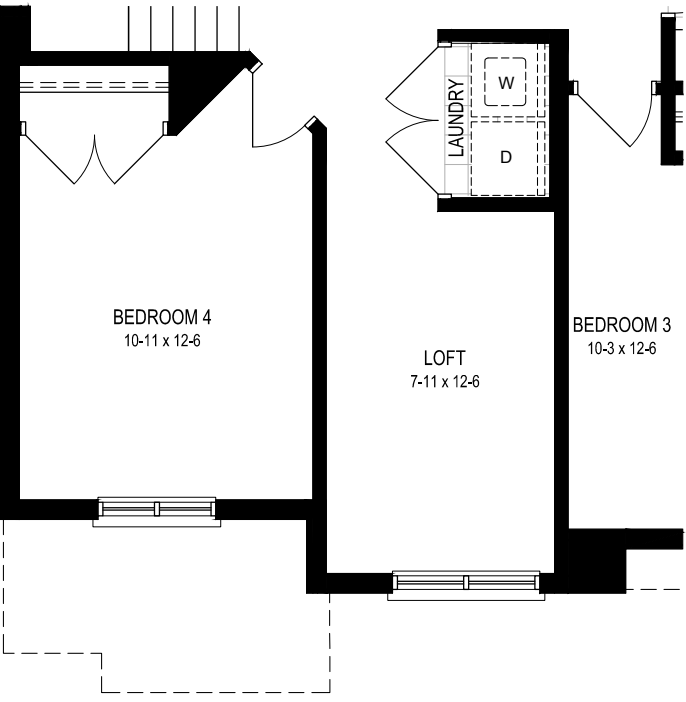
# PARK AVE CENTRAL PARK



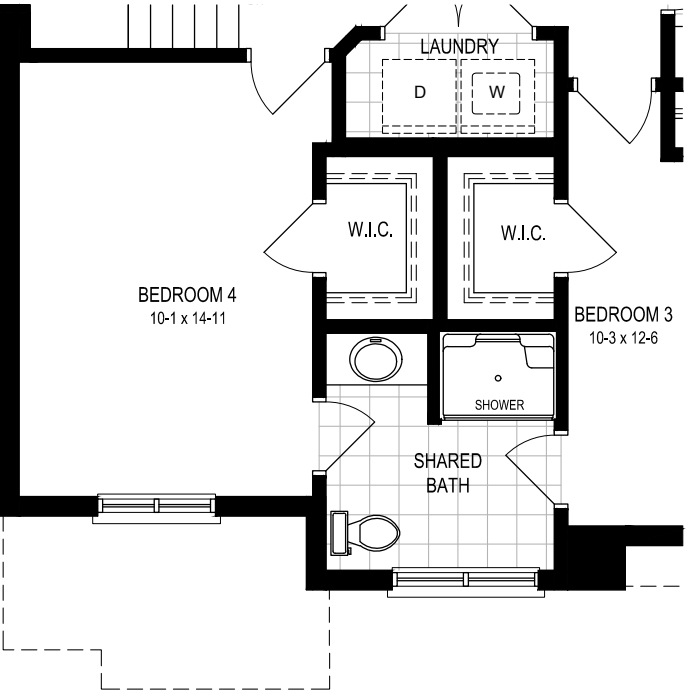
Chateau  
M1



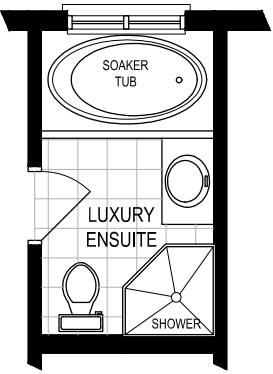
Chateau  
S1



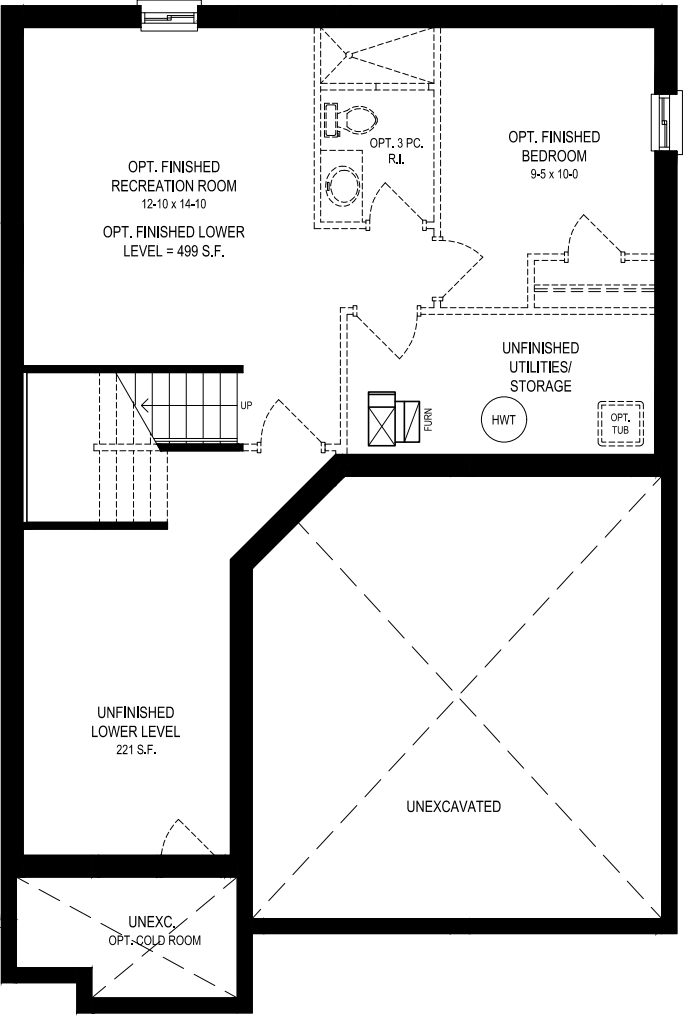
Chateau  
S2



Chateau  
S3



All Elevations  
S1A



Chateau  
B1

## Main Floor & Second Floor

Floorplans may change with elevation. Artist's concept only. Construction of dwelling may not be exactly as shown. Some features shown may be optional extras at additional cost. Exterior elevations, renderings or sketches are subject to architectural controls, the availability of materials to the Vendor during the construction of the Dwelling, and site conditions. Some windows shown on side elevations may not be available due to the applicable side yard setback. Accordingly, all details, dimensions, treatments, specifications and features shown may be changed by the Vendor, the Municipality, the Developer or the Vendor's control architect, in their sole and unfettered discretion at any time without notice. Actual usable floor space may vary from the stated floor area. Due to site conditions and engineering or structural requirements, individual room dimensions may vary. Square footage is measured using the methods and tolerances prescribed by Bulletin 22 published by the Tarion Warranty Corporation. To view the acceptable measures and tolerances, please visit builder bulletin 22 at [www.tarion.com](http://www.tarion.com). Some windows shown on side elevations may not be available due to the applicable side yard setback. Features identified as "Optional" or "Opt" are an additional cost, and may not be available based on the stage of construction of the home. The location of fixtures such as electrical panels, hot water tanks, sump pumps or furnaces may change due to site conditions or engineering requirements. Features shown "where grade permits" or "subject to grading" may not be available based on the grading of the land, and may in some cases require adjacent floor areas to be lowered by one riser, or "sunken". E.&O.E. October 2016

## Second Floor, Lower Level & Enhancements





# THE HILLFIELD

36' Collection



Floorplans may change with elevation. Artist's concept only. Construction of dwelling may not be exactly as shown. Some features shown may be optional extras at additional cost. Exterior elevations, renderings or sketches are subject to architectural controls, the availability of materials to the Vendor during the construction of the Dwelling, and site conditions. Some windows shown on side elevations may not be available due to the applicable side yard setback. Accordingly, all details, dimensions, treatments, specifications and features shown may be changed by the Vendor, the Municipality, the Developer or the Vendor's control architect, in their sole and unfettered discretion at any time without notice.



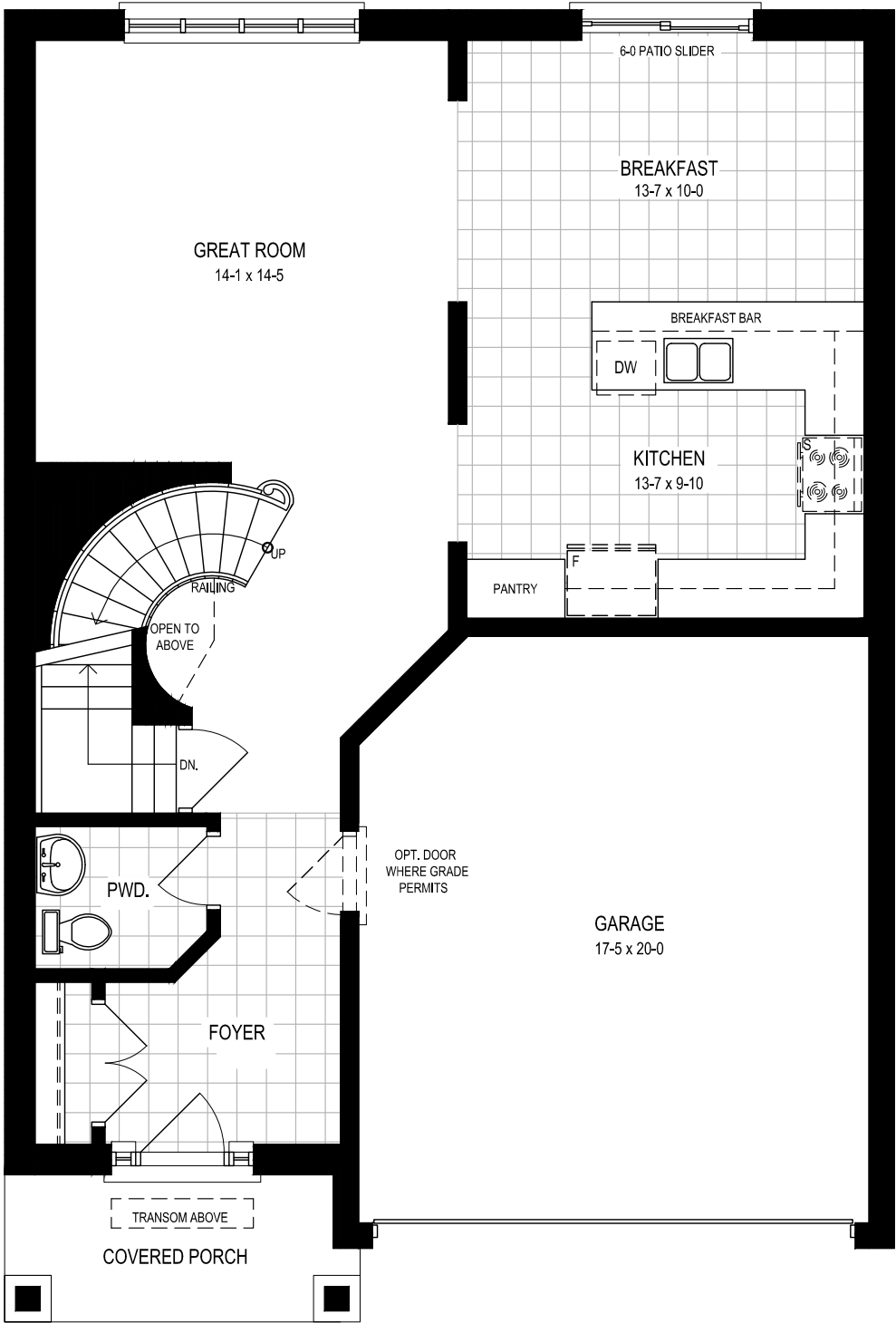


# THE HILLFIELD

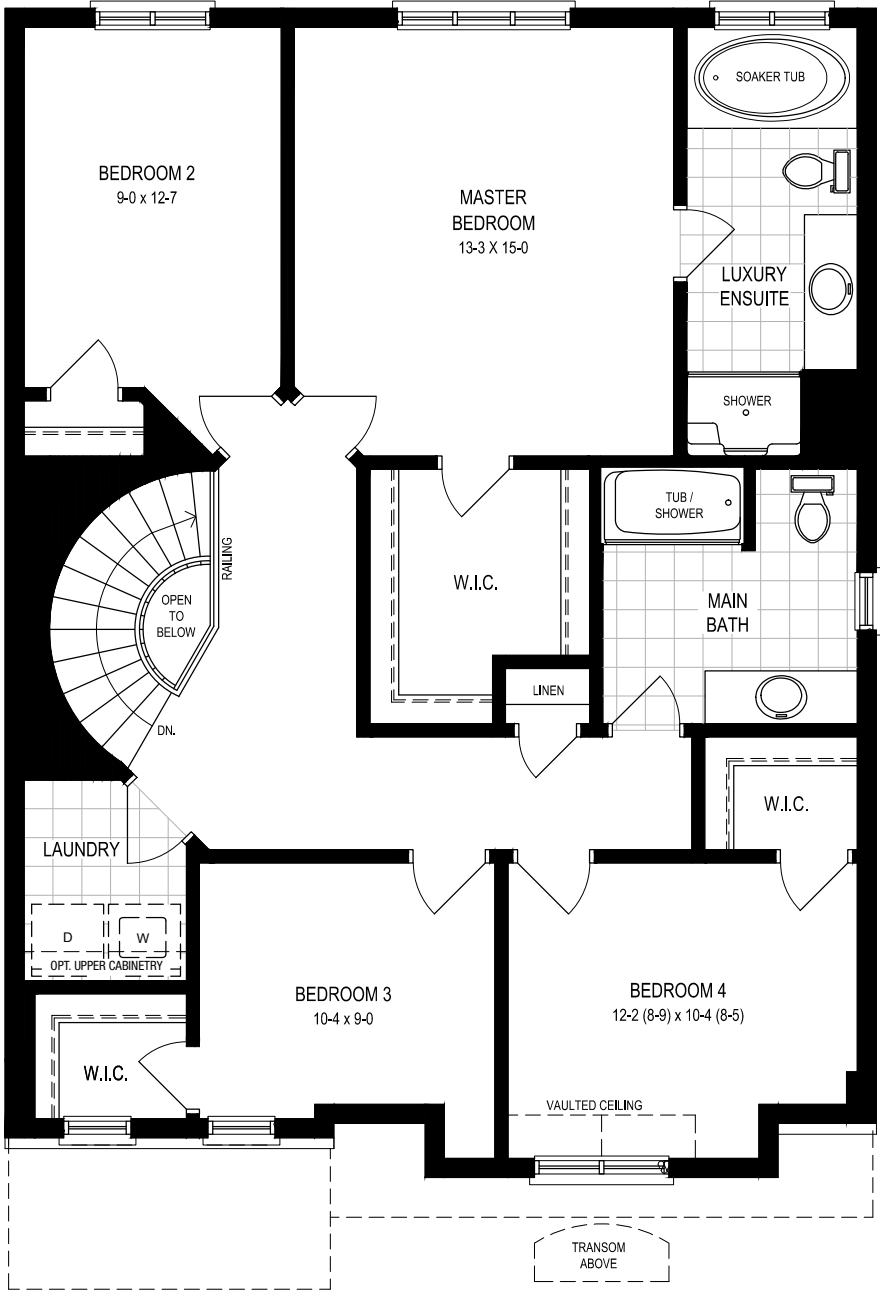
Modern 2,053 sq.ft.  
Chateau 2,042 sq.ft.  
Tuscan 2,068 sq.ft.



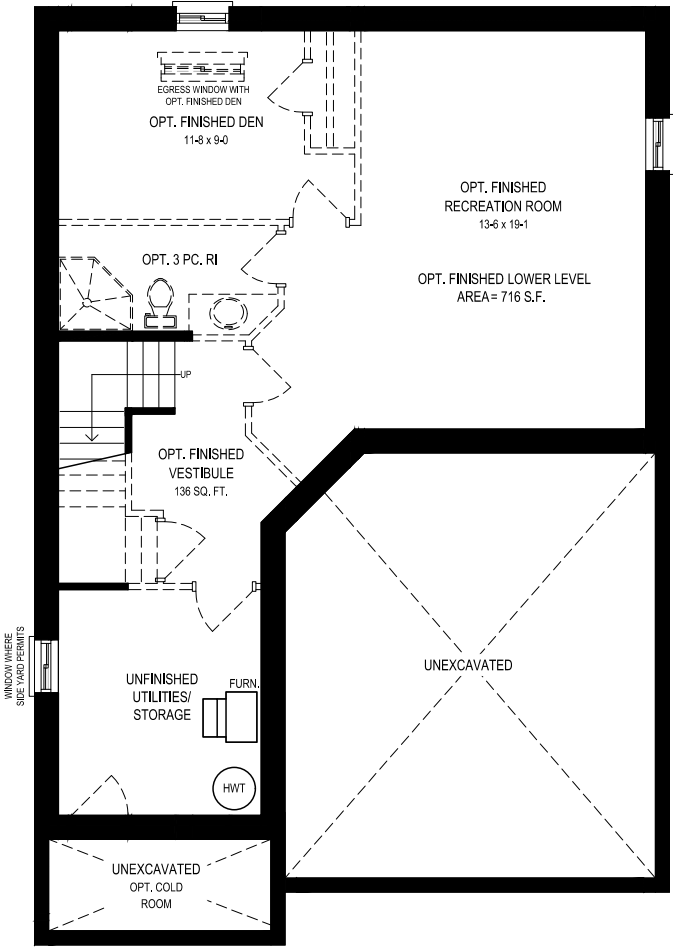
# PARK AVE CENTRAL PARK



Chateau  
M1



Chateau  
S2



All Elevations  
B1

## Main Floor

Floorplans may change with elevation. Artist's concept only. Construction of dwelling may not be exactly as shown. Some features shown may be optional extras at additional cost. Exterior elevations, renderings or sketches are subject to architectural controls, the availability of materials to the Vendor during the construction of the Dwelling, and site conditions. Some windows shown on side elevations may not be available due to the applicable side yard setback. Accordingly, all details, dimensions, treatments, specifications and features shown may be changed by the Vendor, the Municipality, the Developer or the Vendor's control architect, in their sole and unfettered discretion at any time without notice. Actual usable floor space may vary from the stated floor area. Due to site conditions and engineering or structural requirements, individual room dimensions may vary. Square footage is measured using the methods and tolerances prescribed by Bulletin 22 published by the Tarion Warranty Corporation. To view the acceptable measures and tolerances, please visit builder bulletin 22 at [www.tarion.com](http://www.tarion.com). Some windows shown on side elevations may not be available due to the applicable side yard setback. Features identified as "Optional" or "Opt" are an additional cost, and may not be available based on the stage of construction of the home. The location of fixtures such as electrical panels, hot water tanks, sump pumps or furnaces may change due to site conditions or engineering requirements. Features shown "where grade permits" or "subject to grading" may not be available based on the grading of the land, and may in some cases require adjacent floor areas to be lowered by one riser, or "sunken". E.&O.E. October 2016

## Second Floor & Lower Level





# THE CERULEAN

## 36' Collection



Floorplans may change with elevation. Artist's concept only. Construction of dwelling may not be exactly as shown. Some features shown may be optional extras at additional cost. Exterior elevations, renderings or sketches are subject to architectural controls, the availability of materials to the Vendor during the construction of the Dwelling, and site conditions. Some windows shown on side elevations may not be available due to the applicable side yard setback. Accordingly, all details, dimensions, treatments, specifications and features shown may be changed by the Vendor, the Municipality, the Developer or the Vendor's control architect, in their sole and unfettered discretion at any time without notice.





# THE CERULEAN

Modern 2,268 sq.ft.  
Chateau 2,266 sq.ft.  
Tuscan 2,289 sq.ft.



Modern Series



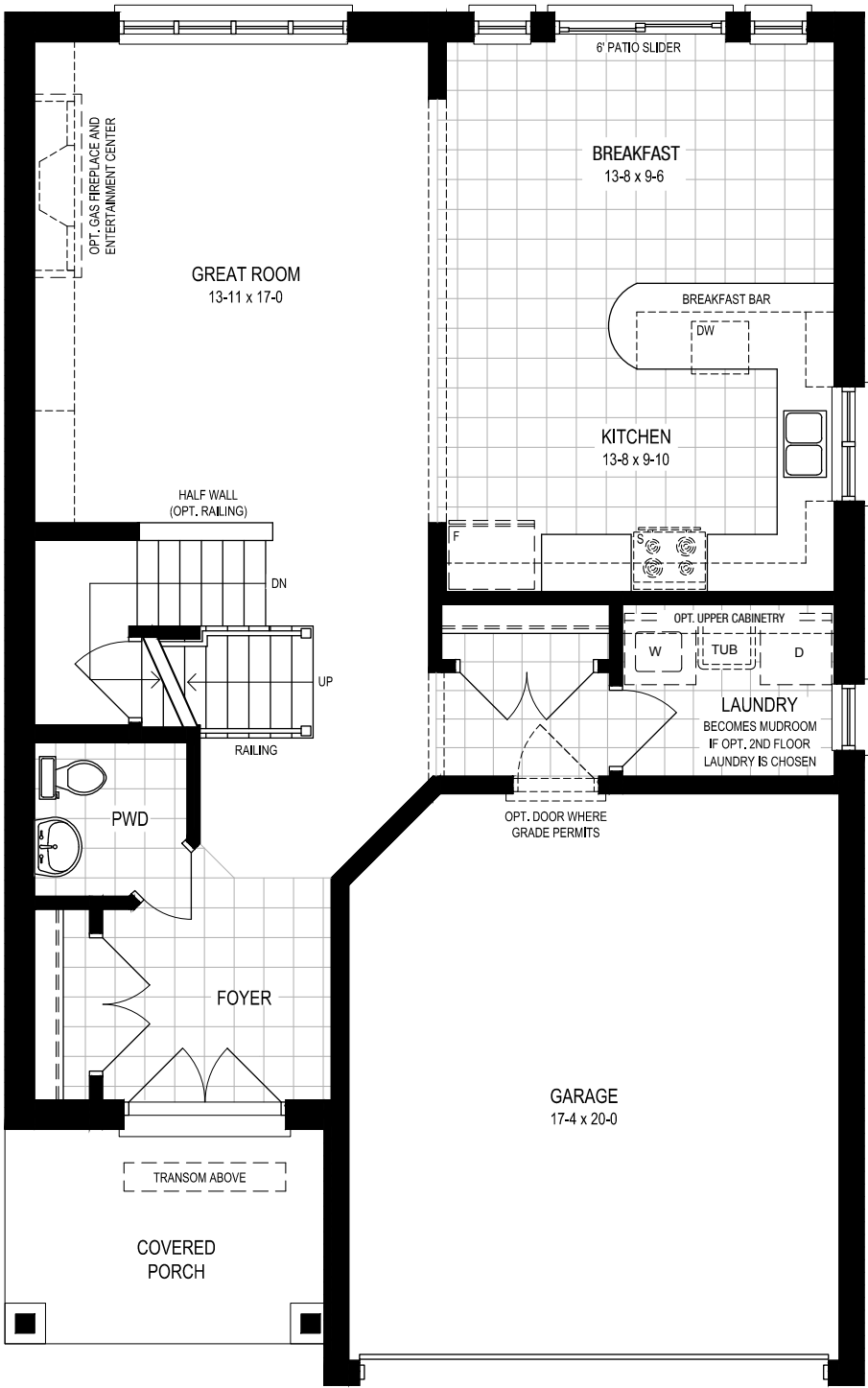
Chateau Series



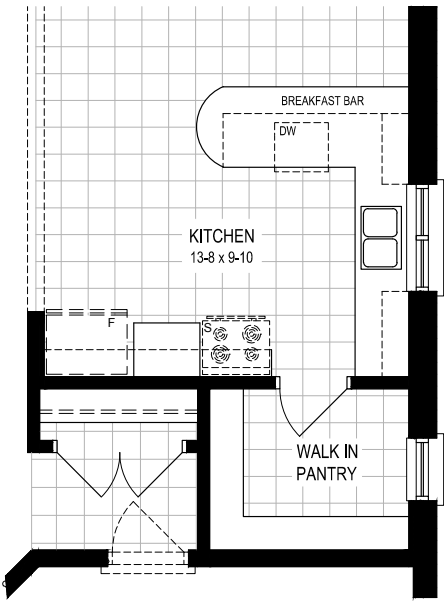
Tuscan Series



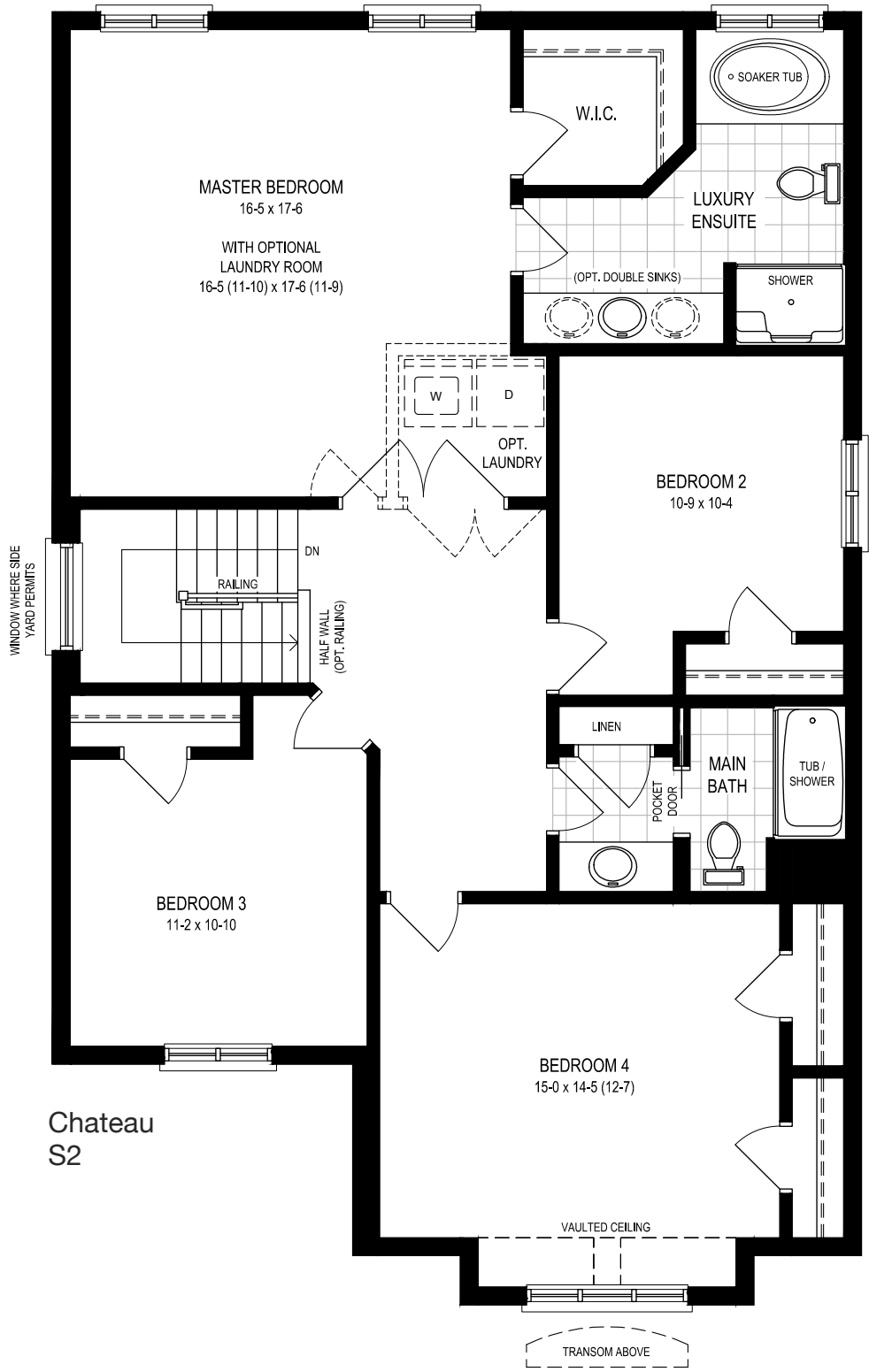
# PARK AVE CENTRAL PARK



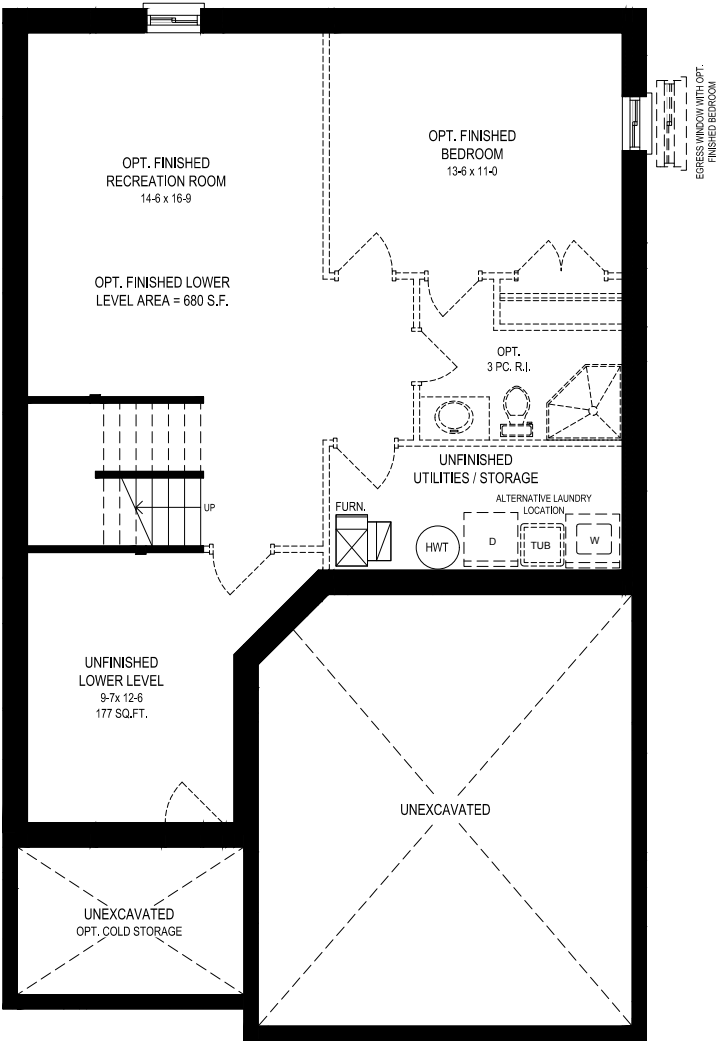
Chateau  
M1



All Elevations  
M2



Chateau  
S2



Chateau & Tuscan  
B1

## Main Floor & Enhancements

Floorplans may change with elevation. Artist's concept only. Construction of dwelling may not be exactly as shown. Some features shown may be optional extras at additional cost. Exterior elevations, renderings or sketches are subject to architectural controls, the availability of materials to the Vendor during the construction of the Dwelling, and site conditions. Some windows shown on side elevations may not be available due to the applicable side yard setback. Accordingly, all details, dimensions, treatments, specifications and features shown may be changed by the Vendor, the Municipality, the Developer or the Vendor's control architect, in their sole and unfettered discretion at any time without notice. Actual usable floor space may vary from the stated floor area. Due to site conditions and engineering or structural requirements, individual room dimensions may vary. Square footage is measured using the methods and tolerances prescribed by Bulletin 22 published by the Tarion Warranty Corporation. To view the acceptable measures and tolerances, please visit builder bulletin 22 at [www.tarion.com](http://www.tarion.com). Some windows shown on side elevations may not be available due to the applicable side yard setback. Features identified as "Optional" or "Opt" are an additional cost, and may not be available based on the stage of construction of the home. The location of fixtures such as electrical panels, hot water tanks, sump pumps or furnaces may change due to site conditions or engineering requirements. Features shown "where grade permits" or "subject to grading" may not be available based on the grading of the land, and may in some cases require adjacent floor areas to be lowered by one riser, or "sunk". E.&O.E. October 2016

## Second Floor & Lower Level





# THE CAROUSEL

36' Collection



Floorplans may change with elevation. Artist's concept only. Construction of dwelling may not be exactly as shown. Some features shown may be optional extras at additional cost. Exterior elevations, renderings or sketches are subject to architectural controls, the availability of materials to the Vendor during the construction of the Dwelling, and site conditions. Some windows shown on side elevations may not be available due to the applicable side yard setback. Accordingly, all details, dimensions, treatments, specifications and features shown may be changed by the Vendor, the Municipality, the Developer or the Vendor's control architect, in their sole and unfettered discretion at any time without notice.





# THE CAROUSEL

Modern 2,309 sq.ft. includes 22 sq.ft. of finished vestibule  
Chateau 2,309 sq.ft. includes 22 sq.ft. of finished vestibule  
Tuscan 2,309 sq.ft. includes 22 sq.ft. of finished vestibule



Modern Series



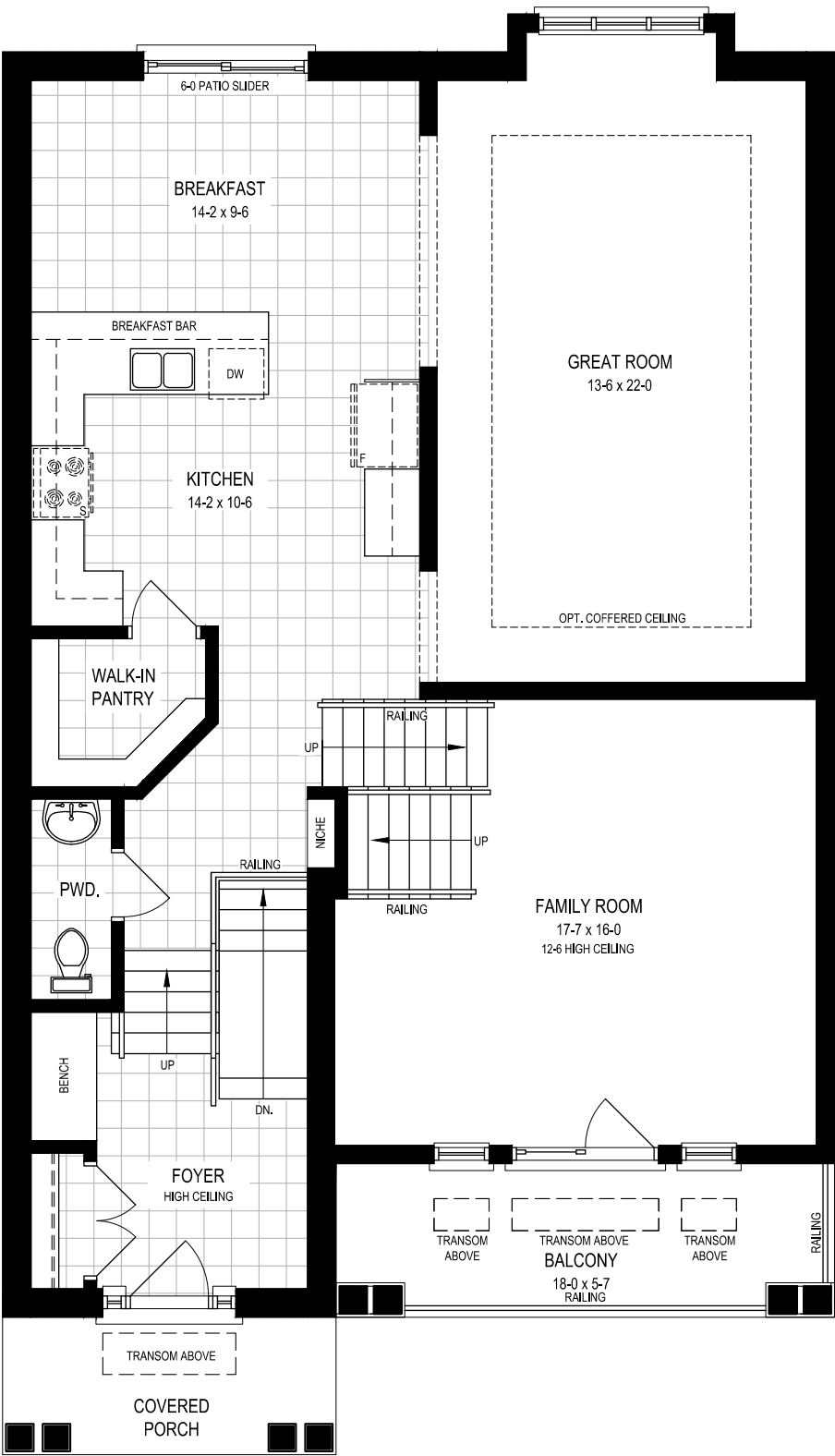
Chateau Series



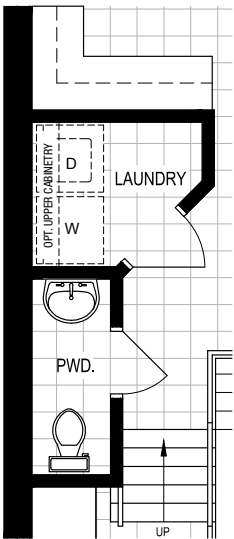
Tuscan Series



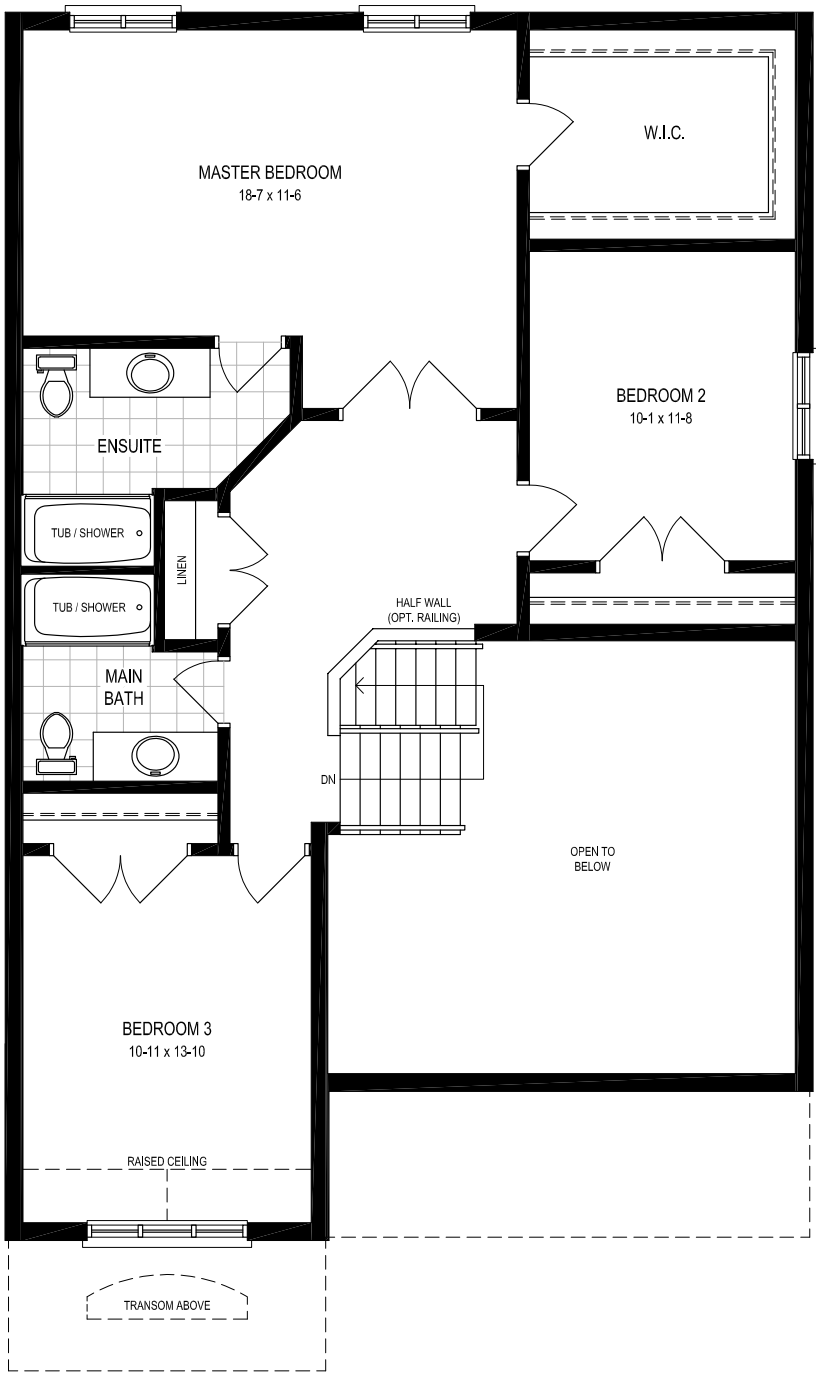
# PARK AVE CENTRAL PARK



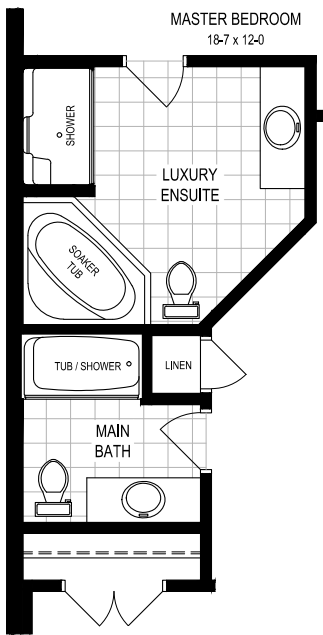
Chateau  
M1



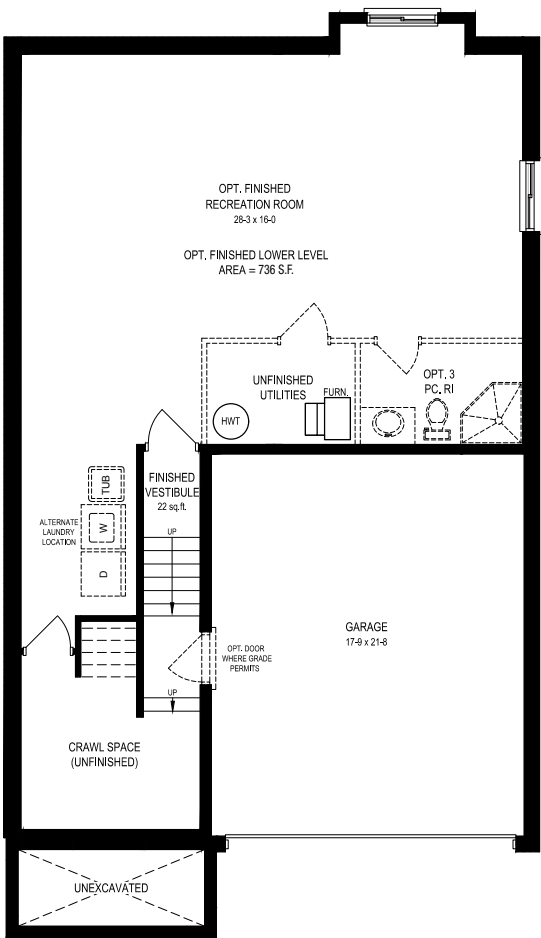
All Elevations  
M2



Chateau  
S3



All Elevations  
S2



Chateau & Tuscan  
B1

## Main Floor & Enhancements

Floorplans may change with elevation. Artist's concept only. Construction of dwelling may not be exactly as shown. Some features shown may be optional extras at additional cost. Exterior elevations, renderings or sketches are subject to architectural controls, the availability of materials to the Vendor during the construction of the Dwelling, and site conditions. Some windows shown on side elevations may not be available due to the applicable side yard setback. Accordingly, all details, dimensions, treatments, specifications and features shown may be changed by the Vendor, the Municipality, the Developer or the Vendor's control architect, in their sole and unfettered discretion at any time without notice. Actual usable floor space may vary from the stated floor area. Due to site conditions and engineering or structural requirements, individual room dimensions may vary. Square footage is measured using the methods and tolerances prescribed by Bulletin 22 published by the Tarion Warranty Corporation. To view the acceptable measures and tolerances, please visit builder bulletin 22 at [www.tarion.com](http://www.tarion.com). Some windows shown on side elevations may not be available due to the applicable side yard setback. Features identified as "Optional" or "Opt" are an additional cost, and may not be available based on the stage of construction of the home. The location of fixtures such as electrical panels, hot water tanks, sump pumps or furnaces may change due to site conditions or engineering requirements. Features shown "where grade permits" or "subject to grading" may not be available based on the grading of the land, and may in some cases require adjacent floor areas to be lowered by one riser, or "sunken". E.&O.E. October 2016

## Second Floor, Lower Level & Enhancements





# THE RICHMOND

36' Collection



Floorplans may change with elevation. Artist's concept only. Construction of dwelling may not be exactly as shown. Some features shown may be optional extras at additional cost. Exterior elevations, renderings or sketches are subject to architectural controls, the availability of materials to the Vendor during the construction of the Dwelling, and site conditions. Some windows shown on side elevations may not be available due to the applicable side yard setback. Accordingly, all details, dimensions, treatments, specifications and features shown may be changed by the Vendor, the Municipality, the Developer or the Vendor's control architect, in their sole and unfettered discretion at any time without notice.



# THE RICHMOND

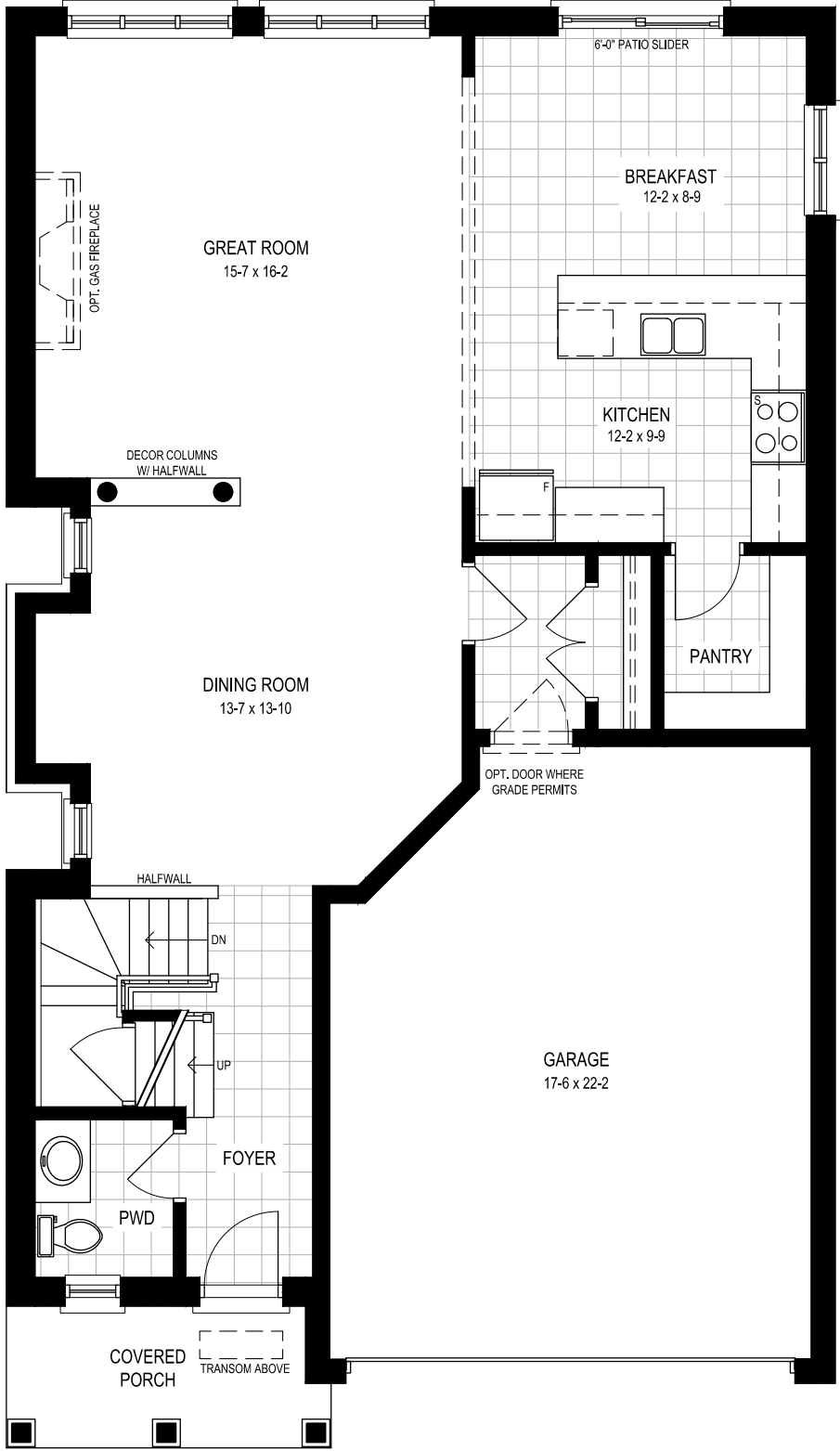
Modern 2,355 sq.ft.  
Chateau 2,362 sq.ft.



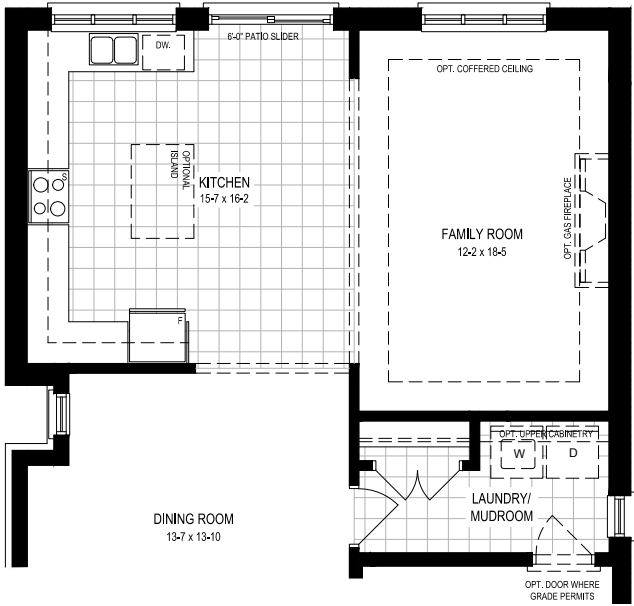
Modern Series



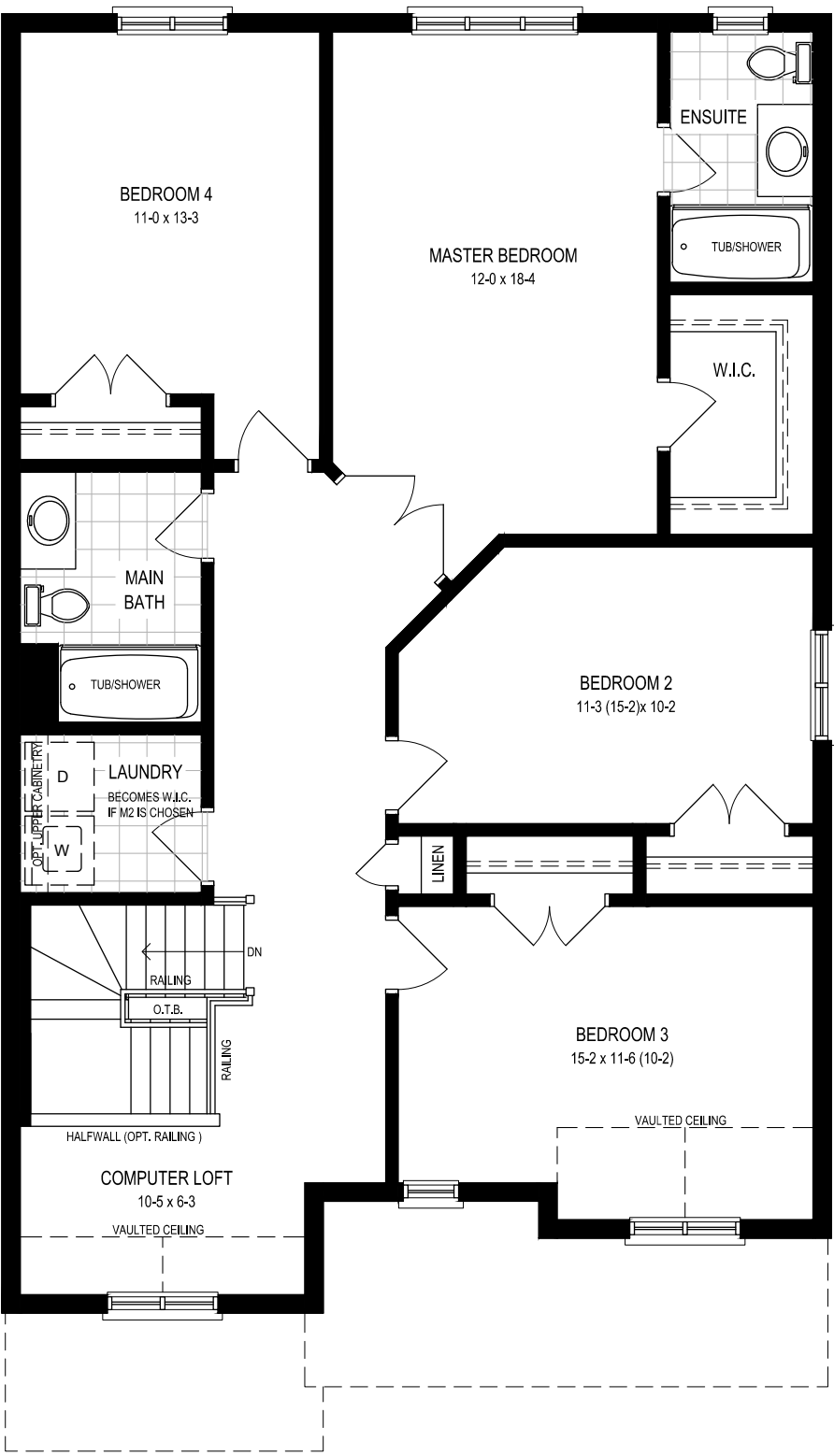
Chateau Series



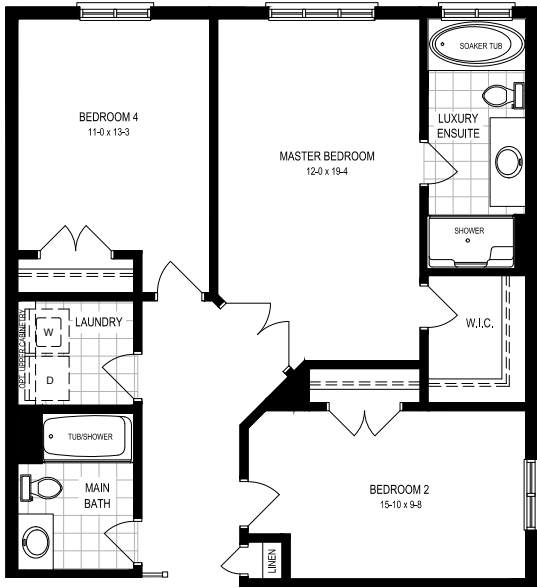
Chateau  
M1



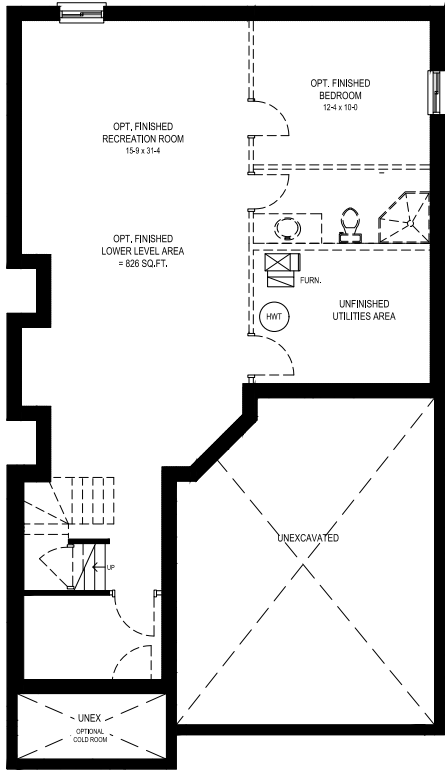
All Elevations  
M2



Chateau  
S1



All Elevations  
S2



All Elevations  
B1

## Main Floor & Enhancements

Floorplans may change with elevation. Artist's concept only. Construction of dwelling may not be exactly as shown. Some features shown may be optional extras at additional cost. Exterior elevations, renderings or sketches are subject to architectural controls, the availability of materials to the Vendor during the construction of the Dwelling, and site conditions. Some windows shown on side elevations may not be available due to the applicable side yard setback. Accordingly, all details, dimensions, treatments, specifications and features shown may be changed by the Vendor, the Municipality, the Developer or the Vendor's control architect, in their sole and unfettered discretion at any time without notice. Actual usable floor space may vary from the stated floor area. Due to site conditions and engineering or structural requirements, individual room dimensions may vary. Square footage is measured using the methods and tolerances prescribed by Bulletin 22 published by the Tarion Warranty Corporation. To view the acceptable measures and tolerances, please visit builder bulletin 22 at [www.tarion.com](http://www.tarion.com). Some windows shown on side elevations may not be available due to the applicable side yard setback. Features identified as "Optional" or "Opt" are an additional cost, and may not be available based on the stage of construction of the home. The location of fixtures such as electrical panels, hot water tanks, sump pumps or furnaces may change due to site conditions or engineering requirements. Features shown "where grade permits" or "subject to grading" may not be available based on the grading of the land, and may in some cases require adjacent floor areas to be lowered by one riser, or "sunken". E.&O.E. October 2016

## Second Floor, Lower Level & Enhancements

