



Download to your mobile

Beamsville

905.563.0666



Parkside Interior

Move In Date: 90 Days* **Phase 3 Unit 136**

Townhome Walk Up Lot 1465 Sq. Ft.

Full Price \$268,969	Value Price \$249,900	Savings \$19,069
--------------------------------	--	-----------------------------------

Luxury Upgrades Include

Door from Interior to Garage 2 pc Rough In in Basement Master Bedroom Retreat

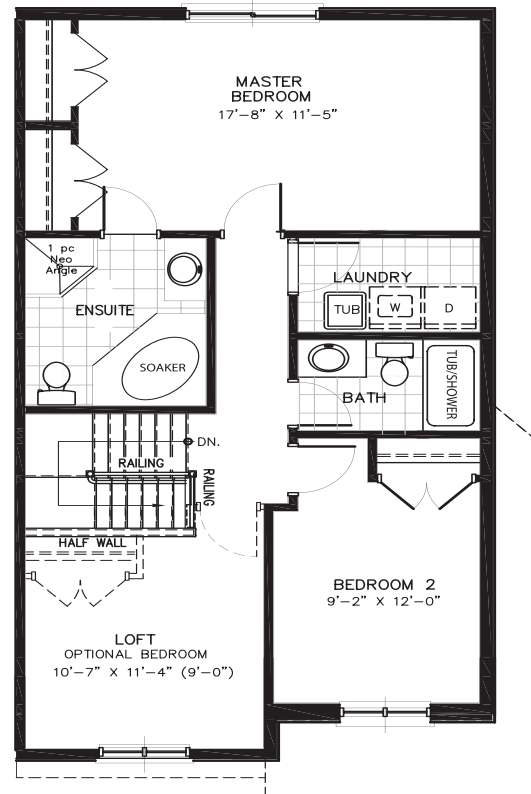
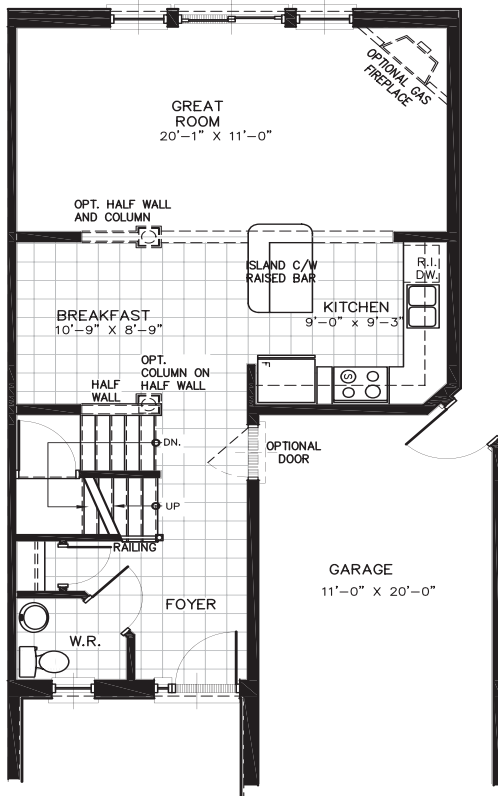
Kitchen Extras Rounded Drywall Corners Luxurious Ensuite

Contact Discovery for further details. 4871 John St., Beamsville. Mon-Thurs 1-6 Sat & Sun 12-5.



DISCOVERY

Find Yourself in Beamsville.



SECOND FLOOR - S6

