



Download to your mobile

Beamsville

905.563.0666

Move In Date: IMMEDIATE **Phase 3 Unit 145**

Townhome Walk Up Lot 1465 Sq. Ft.

Full Price \$257,219	Value Price \$239,900	Savings \$17,319
--------------------------------	---------------------------------	----------------------------



Parkside Interior



Luxury Upgrades Include

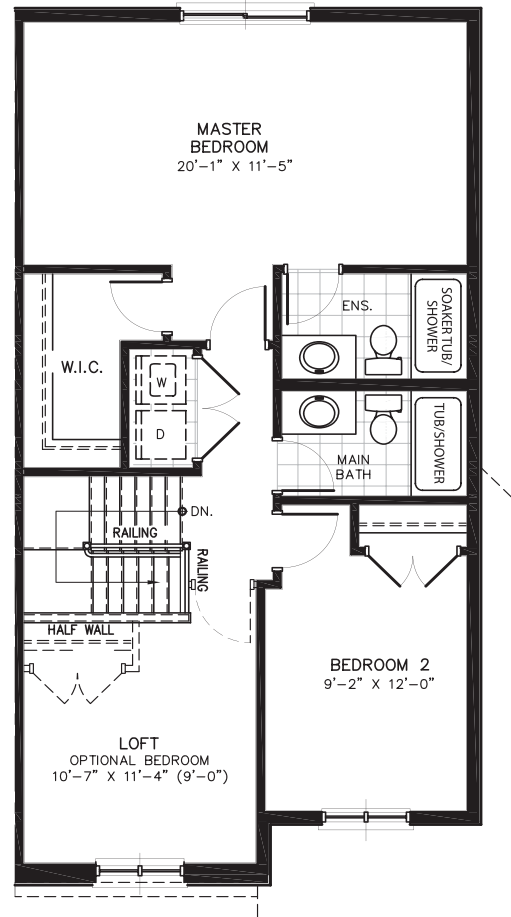
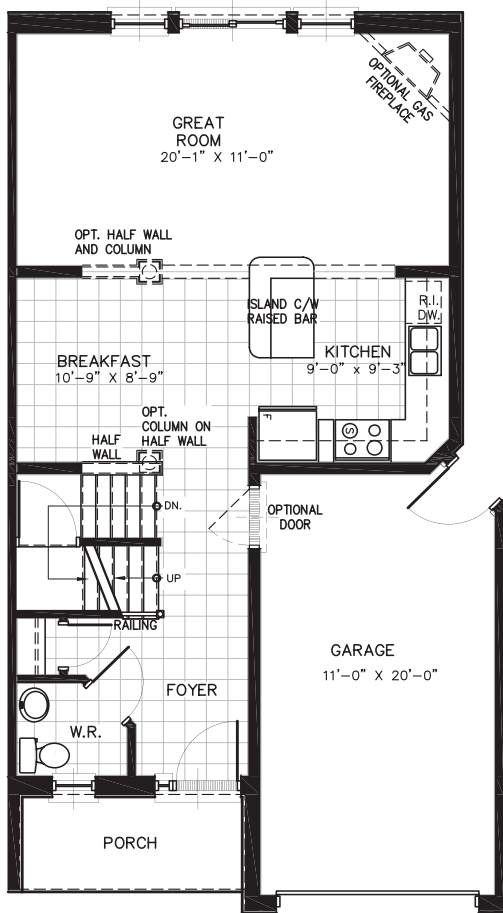
Door from Interior to Garage 2 pc Rough In in Basement Master Bedroom Retreat

Kitchen Extras Rounded Drywall Corners Luxurious Ensuite

Contact Discovery for further details. 4871 John St., Beamsville. Mon-Thurs 1-6 Sat & Sun 12-5.

DISCOVERY

Find Yourself in Beamsville.



MAIN FLOOR - M1

SECOND FLOOR - S2

