



The Mulberry

Kitchener

519.893.7600

Move In Date: **90 Days*** Phase 2 Lot 44

2 Storey 40' Standard Lot 2896 Sq. Ft.

Full Price
\$484,714

Value Price
\$467,900

Savings
\$16,814

Luxury Upgrades Include

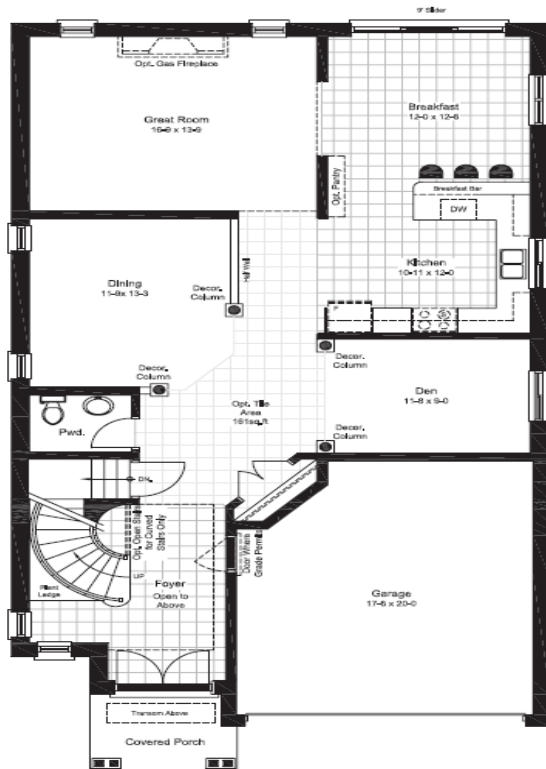
9' Main Floor Ceilings Kitchen Upgrades Garage Entry Door

Gas Fireplace Oak Staircase Fruit Cellar

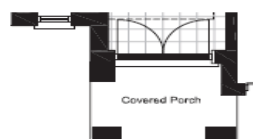
Visit Doon Creek for Details. 691 Robert Ferry Drive, Kitchener. Mon to Thurs 2-7, Sat & Sun 12-5



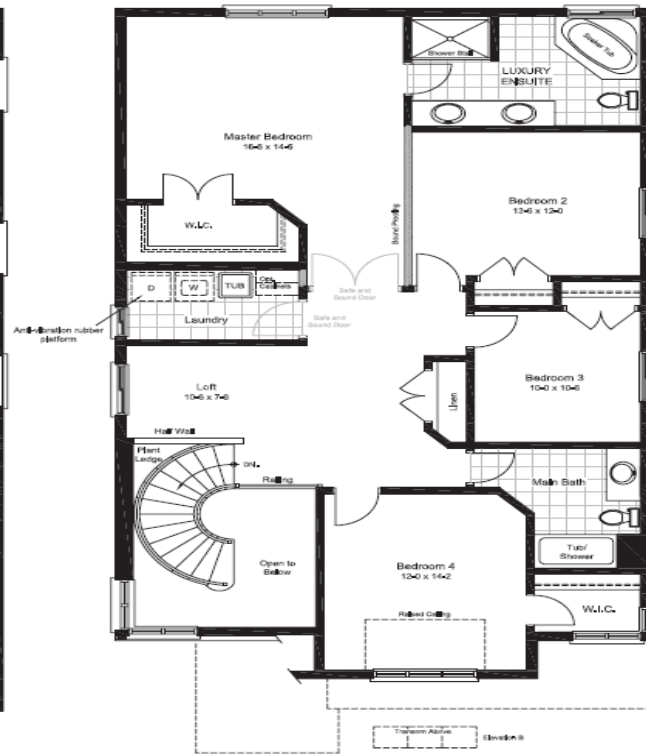
STANDARD MAIN FLOOR - M1
ELEV. B



ELEV. A



STANDARD SECOND FLOOR - S1
ELEV. B



ELEV. A

