



Parkside Interior

Beamsville

905.563.0666

Download to your mobile

Move In Date: 60 Days* **Phase 3 Unit 122**

Townhome **Walk Up Lot** **1465 Sq. Ft.**

Full Price \$255,014	New Price \$239,900	Savings \$15,114
---------------------------------------	--------------------------------------	-----------------------------------

Luxury Upgrades Include

Door from Interior to Garage 2 pc Rough In in Basement Master Bedroom Retreat

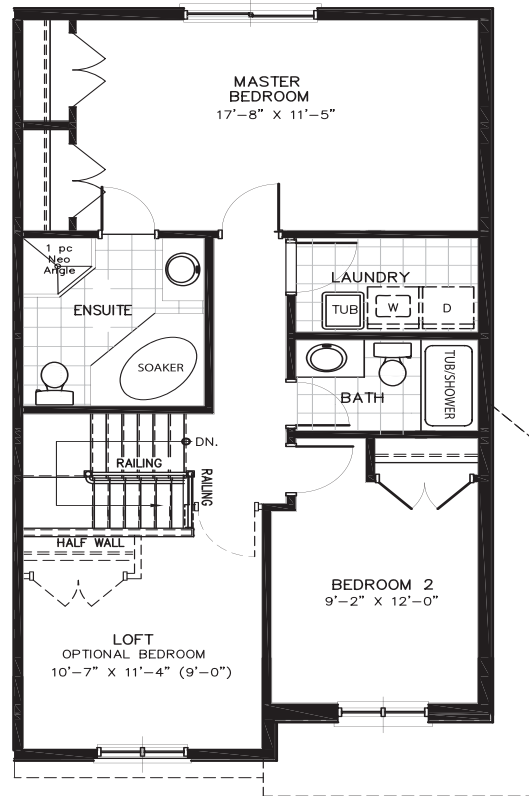
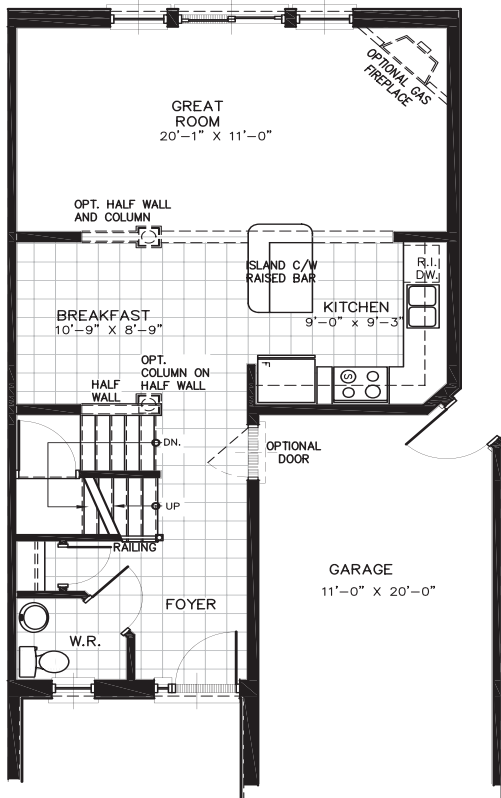
Kitchen Extras Rounded Drywall Corners Luxurious Ensuite

Contact Discovery for further details. 4871 John St, Beamsville. Mon-Thurs 1-6 Sat & Sun 12-5.



DISCOVERY

Find Yourself in Beamsville.



SECOND FLOOR - S6

