



Download to your mobile

Beamsville

905.563.0666

Move In Date:

60 Days*

Phase 3 Unit 113

Townhome

2 Storey

1465 Sq. Ft.

Full Price

\$252,212

Value Price

\$239,900

Savings

\$12,312



Parkside Interior



Luxury Upgrades Include

Door from Interior to Garage

3 pc Rough In in Basement

Fridge Buildout

Ensuite

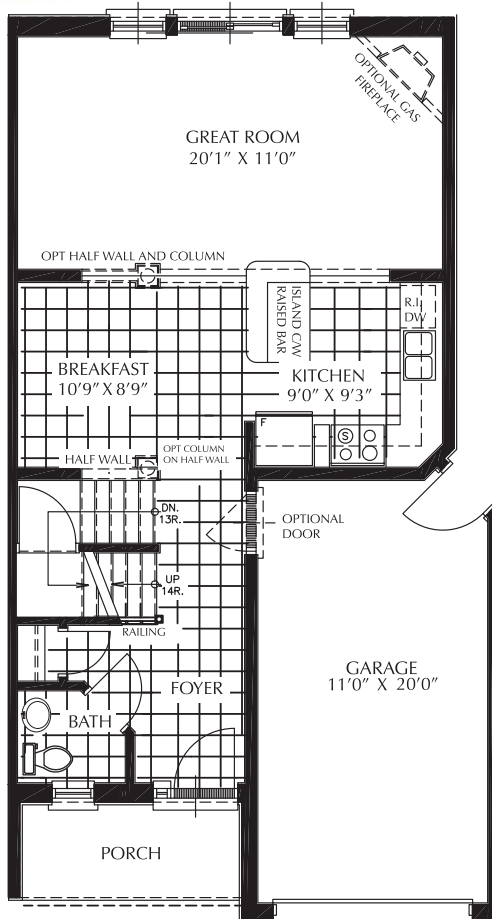
Rounded Drywall Corners

Kitchen Upgrades

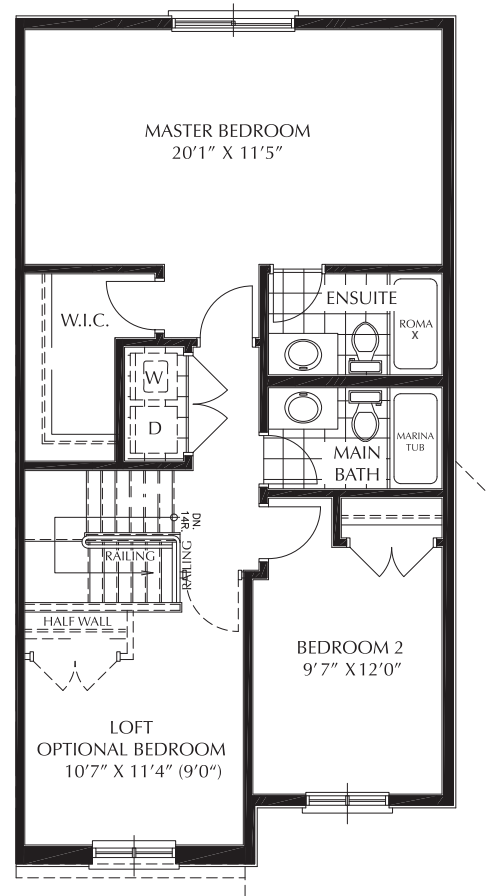
Contact Discovery for further details. 4405 Garden Gate Terrace., Beamsville. Mon-Thurs 1-6 Sat & Sun 12-5.

DISCOVERY

Find Yourself in Beamsville.



MAIN FLOOR- M1



SECOND FLOOR- S2

