



Download to your mobile



Willowview End M1/S1

## Winona

289.656.0533

**Move In Date:** 90 Days\* **Phase 1 Lot 97**

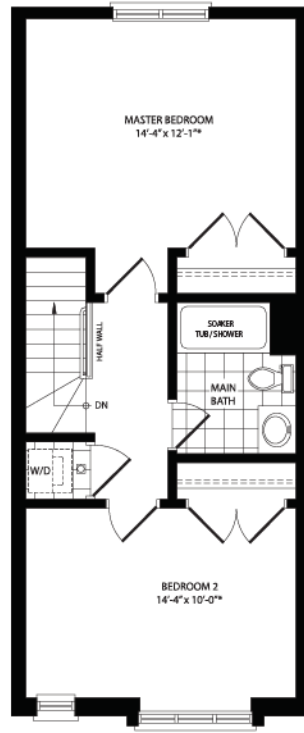
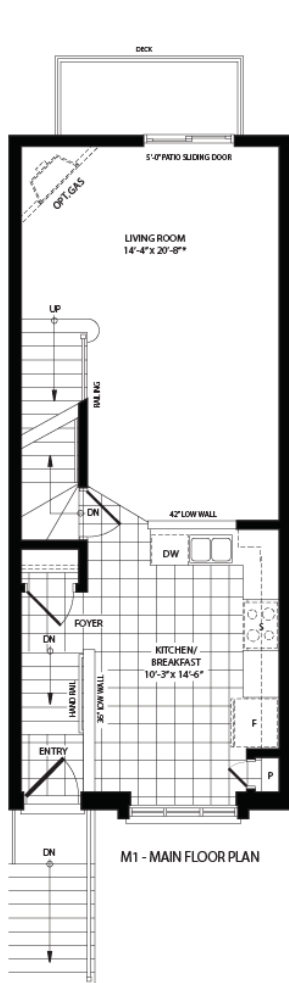
**3 Storey** **Townhome** **1377 Sq. Ft.**

**Full Price** **Value Price** **Savings**  
**\$244,849** **\$237,264** **\$7,585**

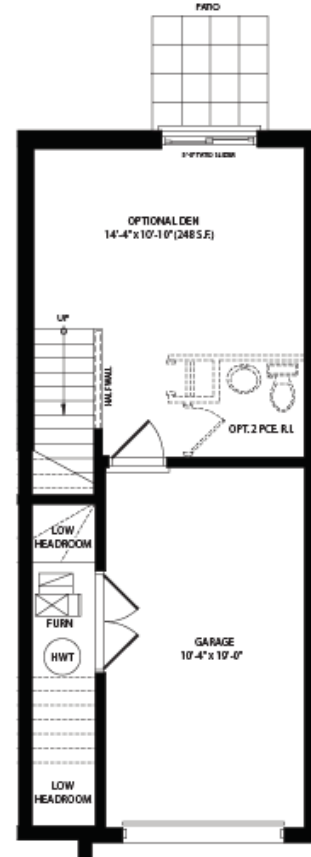
### Luxury Upgrades Include

5 Piece Appliance	Air Conditioner	Kitchen Extras
2 piece rough-in	Granite in Kitchen	Extra Potlights

Contact the Ridgeview Sales Office at 43 West Ave., Winona . 289-656-0533



S1 - SECOND FLOOR



G1 - GROUND FLOOR

